



# UCS ELECTRIC HEAT SERIES

*UCS\*0 • UCS\*X*  
Wall Mount Fan Coils

Compatible with R454B and R32 & R410A (Replacement Only)

Wall / Closet Indoor Air Handler

1.5 – 3.0 Ton Cooling or Heat Pump

Up to 10 kW Electric Heat



---

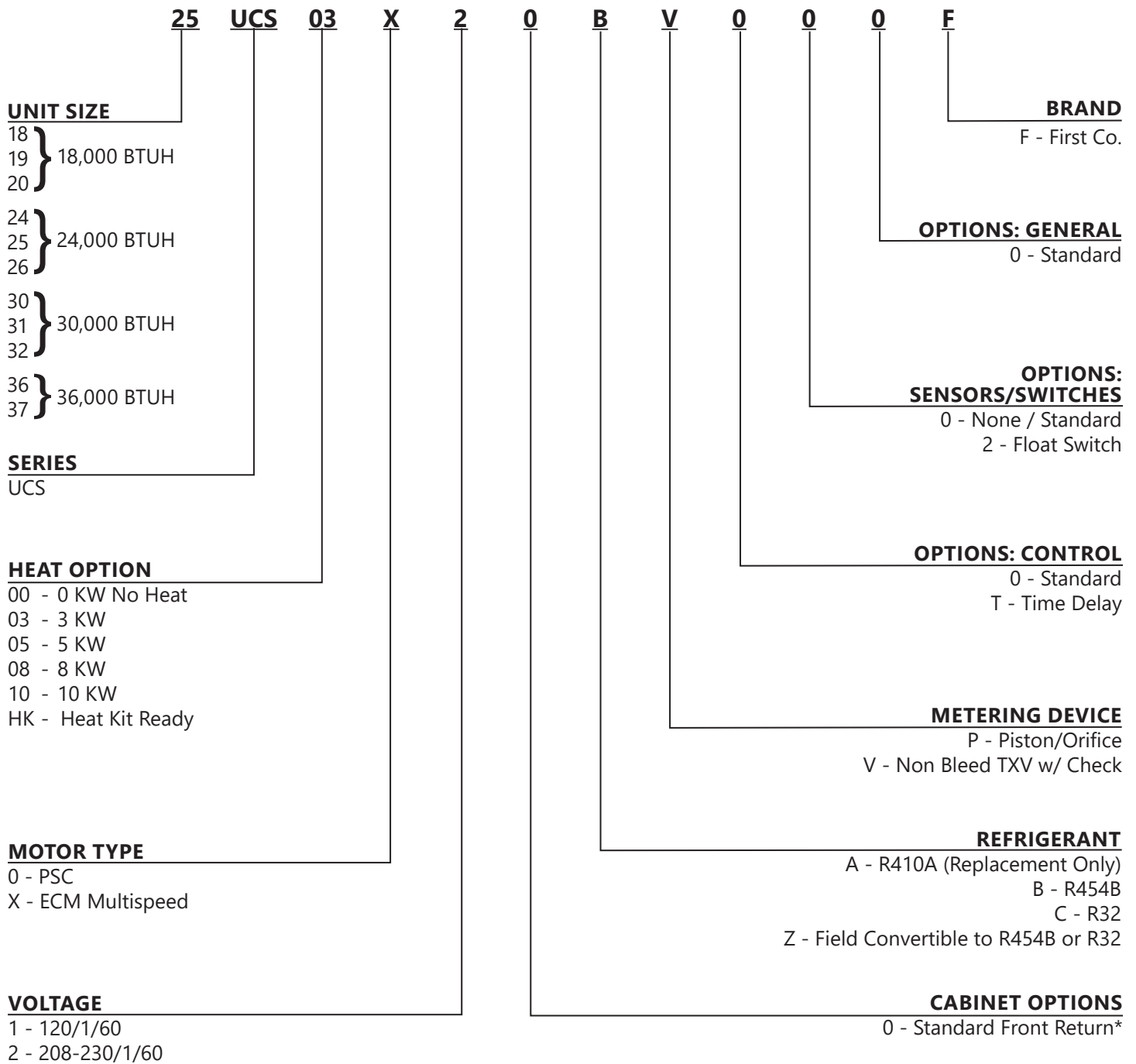
# TABLE OF CONTENTS

NOMENCLATURE ..... 3  
PRODUCT OVERVIEW ..... 4  
ACCESSORIES ..... 5  
PHYSICAL DATA ..... 7  
GENERAL DATA ..... 11  
PERFORMANCE DATA ..... 12  
BLOWER DATA ..... 14

First Co.'s customer is ultimately responsible for confirming which fan coil models are compatible with selected outdoor unit(s) and which expansion valves (if any) are required. To determine certified indoor/outdoor combinations, go to [www.firstco.com](http://www.firstco.com) or contact the factory.

In keeping with its policy of continuous progress and product improvement, First Co. reserves the right to make changes without notice.

# NOMENCLATURE



\*Field converted bottom return is achieved by removing the bottom panel and installing it on lower front of cabinet.

In keeping with its policy of continuous progress and product improvement, First Co. reserves the right to make changes without notice.

# UCS ELECTRIC HEAT SERIES

## WALL MOUNT FAN COILS

### PRODUCT OVERVIEW

#### APPLICATION

The UCS unit is designed as an upflow indoor air handler for use with today's higher efficiency split-system heat pumps or air conditioning units.

The cabinet is constructed of galvanized steel and is fully insulated. It has been tested in accordance with ASHRAE 193 and verified to have a leakage rate not exceeding 2%.

The condensate pan is sloped to ensure proper drainage. For installation flexibility, drain piping can be located on the bottom, front, left or right side of the cabinet.

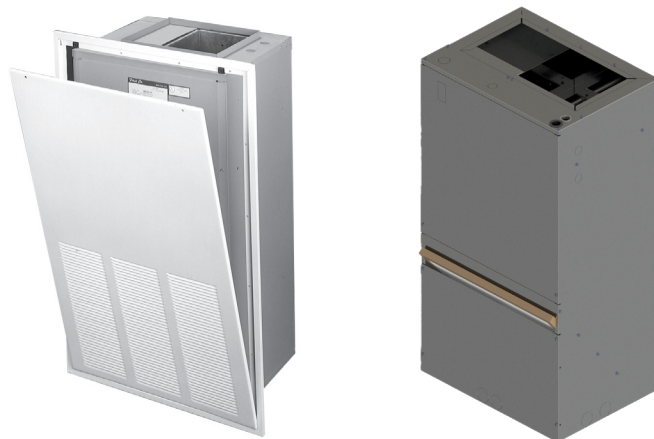
Units ordered with R-454B or R-32 are factory configured with a TXV or piston and include a factory-installed refrigerant detection sensor. Field-convertible units are designed for use with R-454B and R-32 refrigerants and also include a factory-installed refrigerant detection sensor. TXV kits are available separately.

#### STANDARD FEATURES

- 240V motor, 24V controls
- Factory installed disconnect only with Electric Heat
- Separate compartment for drain connections
- Drain pan has 3/4" male or female primary and secondary fittings
- High efficiency cooling coil
- Convenient equalizer connection for factory or field installed TXV's (non- bleed type)
- Easily accessible 1" filter
- Back panel tooled to fit into wall hanging bracket (purchased separately)
- Flat top, handbend foldable flanges for ducting
- Easy blower removal with slideout blower

#### OPTIONAL FEATURES

Optional accessories include field installed Heater Kits, factory or field installed TXV Kits (non-bleed type), Wall Panels with Captive Screws, Condensate Overflow Switch, and Closet Hanger Bracket Kit.



UCS-EH

Field converted bottom return is achieved by removing the bottom panel and installing it on lower front of cabinet as shown.

# UCS ELECTRIC HEAT SERIES

WALL MOUNT FAN COILS

UCS\*

## PRODUCT OVERVIEW (CONT'D)

### ACCESSORIES

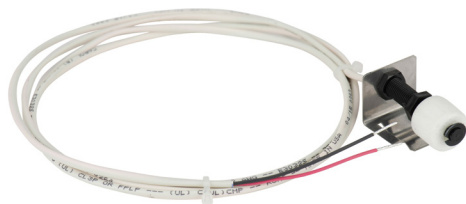
FIELD INSTALLED WALL PANELS				
DESCRIPTION	UNIT SIZE	PART #	DIMENSIONS	
			(OUTSIDE FRAME)	(INSIDE FRAME)
LOUVERED WALL PANELS	18-25/31	9PWUCS01L	43.38" x 25.63"	40.38" x 22.63"
	30/32-37	9PWUCS02L		
SOLID WALL PANELS	18-25/31	9PWUCS01S	46.38" x 25.63"	43.38" x 22.63"
	30/32-37	9PWUCS02S		
CONDENSATE OVERFLOW SWITCH	ALL	SS3	---	---
R454B FIELD-CONVERTIBLE TVX	ALL	9EVR454B-1A	---	---
R32 FIELD-CONVERTIBLE TVX	ALL	9EVR32-1A	---	---

**NOTES:**

1. Above expansion valve kits (TXV) are approved for heating and cooling applications.
2. Valves are non-bleed type and field-installed. Hard start kit may be required.
3. Valves have Chatleff connections.

**IMPORTANT NOTE**

All units with field-convertible TXV's ship with a factory-installed refrigerant detection sensor. Field installed TXV's must be compatible with the A2L refrigerant being used. Failure to maintain use of refrigerant detection sensor may result in unit damage, property damage, and/or death. Warranty will be void



**Condensate Overflow Switch**  
#SS3



**Optional Louvered Wall Panel**  
Recessed wall application



**Optional Solid Wall Panel**  
Recessed wall application

In keeping with its policy of continuous progress and product improvement, First Co. reserves the right to make changes without notice.

### PRODUCT OVERVIEW (CONT'D)

#### ACCESSORIES

FIELD-INSTALLED ACCESSORIES		
DESCRIPTION	UNIT SIZE	PART NUMBER
3kW HEATER KIT	18-25	9EHUCS1-203
	26; 31	9EHUCS2-203
	30, 32-37	9EHUCS3-203
5kW HEATER KIT	18-25	9EHUCS1-205
	26; 31	9EHUCS2-205
	30, 32-37	9EHUCS3-205
8kW HEATER KIT	18-25	9EHUCS1-208
	26; 31	9EHUCS2-208
	30, 32-37	9EHUCS3-208
10kW HEATER KIT	18-25	9EHUCS1-210
	26; 31	9EHUCS2-210
	30, 32-37	9EHUCS3-210

**NOTES:**

1. Heater kits are only approved for installation in models without a factory-installed heater.



**UCS**  
Electric Heat w/Disconnect

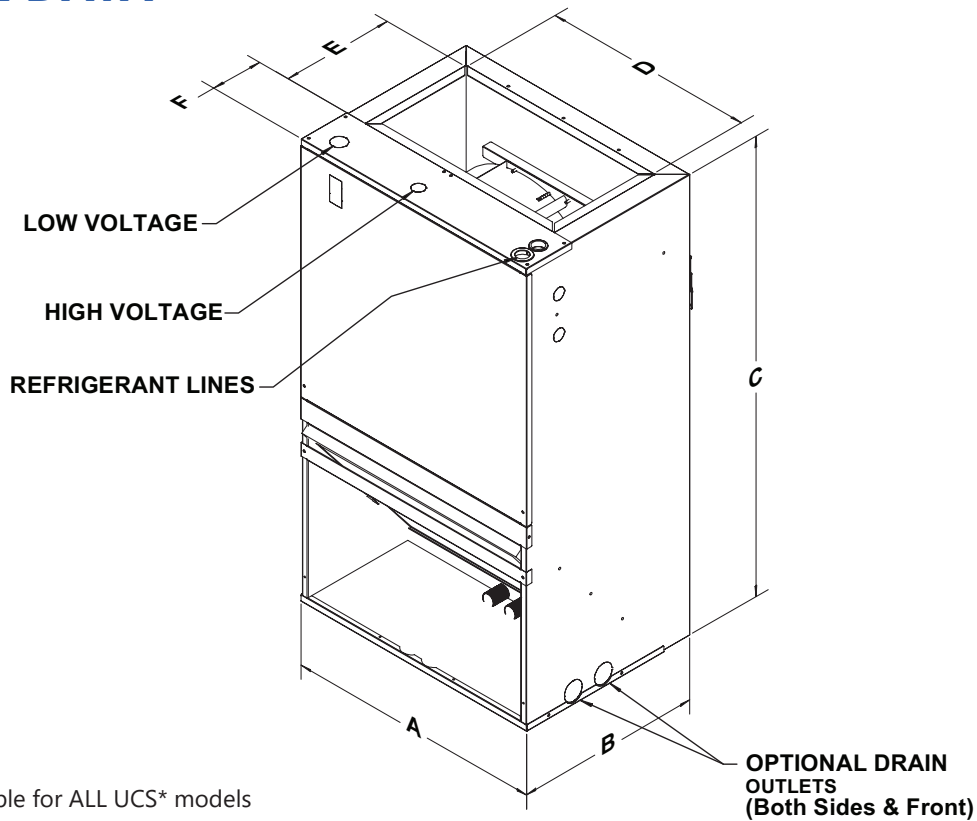
In keeping with its policy of continuous progress and product improvement, First Co. reserves the right to make changes without notice.

# UCS ELECTRIC HEAT SERIES

UCS\*

## WALL MOUNT FAN COILS

### PHYSICAL DATA



**NOTES:**

1. 0 - 10 kW is available for ALL UCS\* models

UCS*0 – PHYSICAL DIMENSIONS										
UNIT MODEL	A	B	C	D	E	F	FILTER SIZE	LIQUID LINE	SUCTION LINE	RETURN OPENING DIM.
<b>18-25 UCS*</b>	20.63 [52.40]	15.10 [38.35]	36.50 [92.71]	17.30 [43.94]	9.30 [23.62]	4.17 [10.59]	16 X 20 [40.64 X 50.80]	3/8 O.D. [9.5mm]	3/4 O.D. [19mm]	19.56 X 10.94 [49.68 X 27.79]
<b>26, 31 UCS*</b>	20.63 [52.40]	17.10 [43.43]	36.50 [92.71]	17.30 [43.94]	9.30 [23.62]	6.13 [15.57]	16 X 20 [40.64 X 50.8]	3/8 O.D. [9.5mm]	3/4 O.D. [19mm]	19.56 X 11.23 [49.68 X 27.79]
<b>30,32,36,37 UCS*</b>	22.19 [56.36]	19.10 [48.51]	39.69 [100.81]	18.81 [47.77]	8.94 [22.71]	8.56 [21.74]	20X20 [50.80 X 50.80]	3/8 O.D. [9.5mm]	3/4 O.D. [19mm]	20.75 X 13.75 [52.70 X 34.93]

**NOTES:**

1. Coil connections are sweat

In keeping with its policy of continuous progress and product improvement, First Co. reserves the right to make changes without notice.

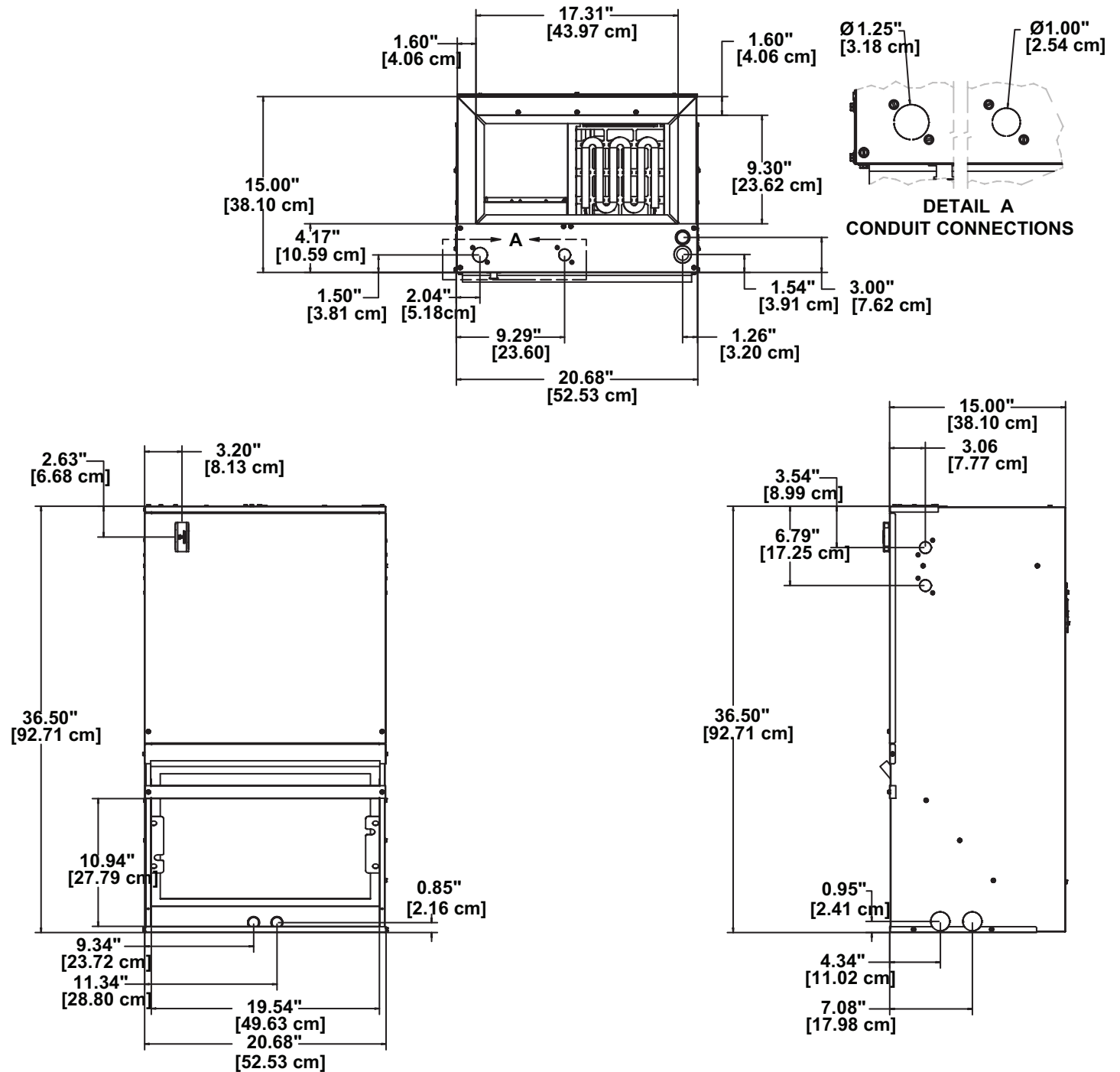
# UCS ELECTRIC HEAT SERIES

UCS\*

WALL MOUNT FAN COILS

## PHYSICAL DATA

SIZE 18/19/20/24/25



In keeping with its policy of continuous progress and product improvement, First Co. reserves the right to make changes without notice.

# UCS ELECTRIC HEAT SERIES

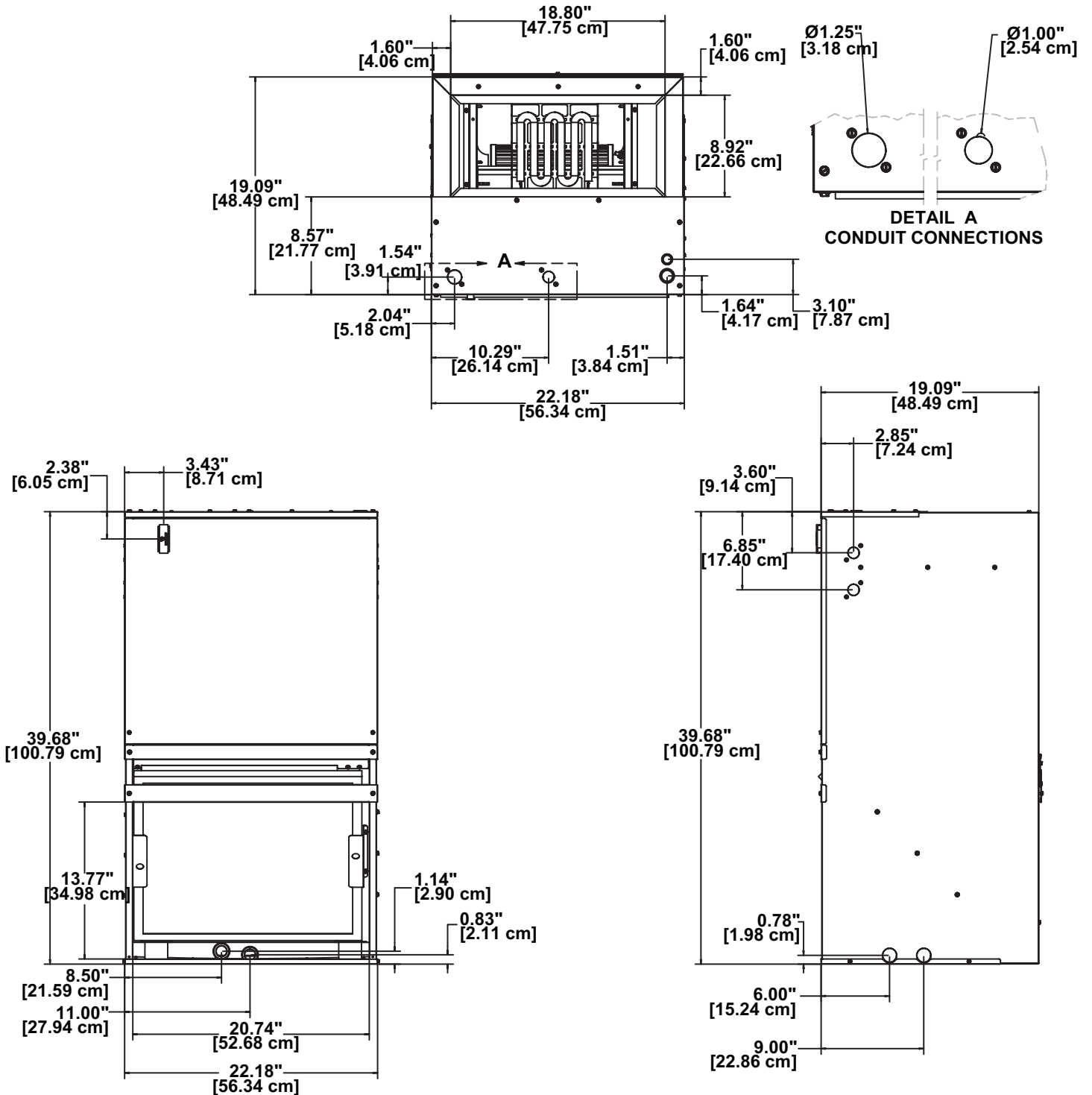
ELECTRIC HEAT W/PSC MOTOR

UCS\*0

DATA TABLES

## PHYSICAL DATA)

SIZE 26/31



In keeping with its policy of continuous progress and product improvement, First Co. reserves the right to make changes without notice.

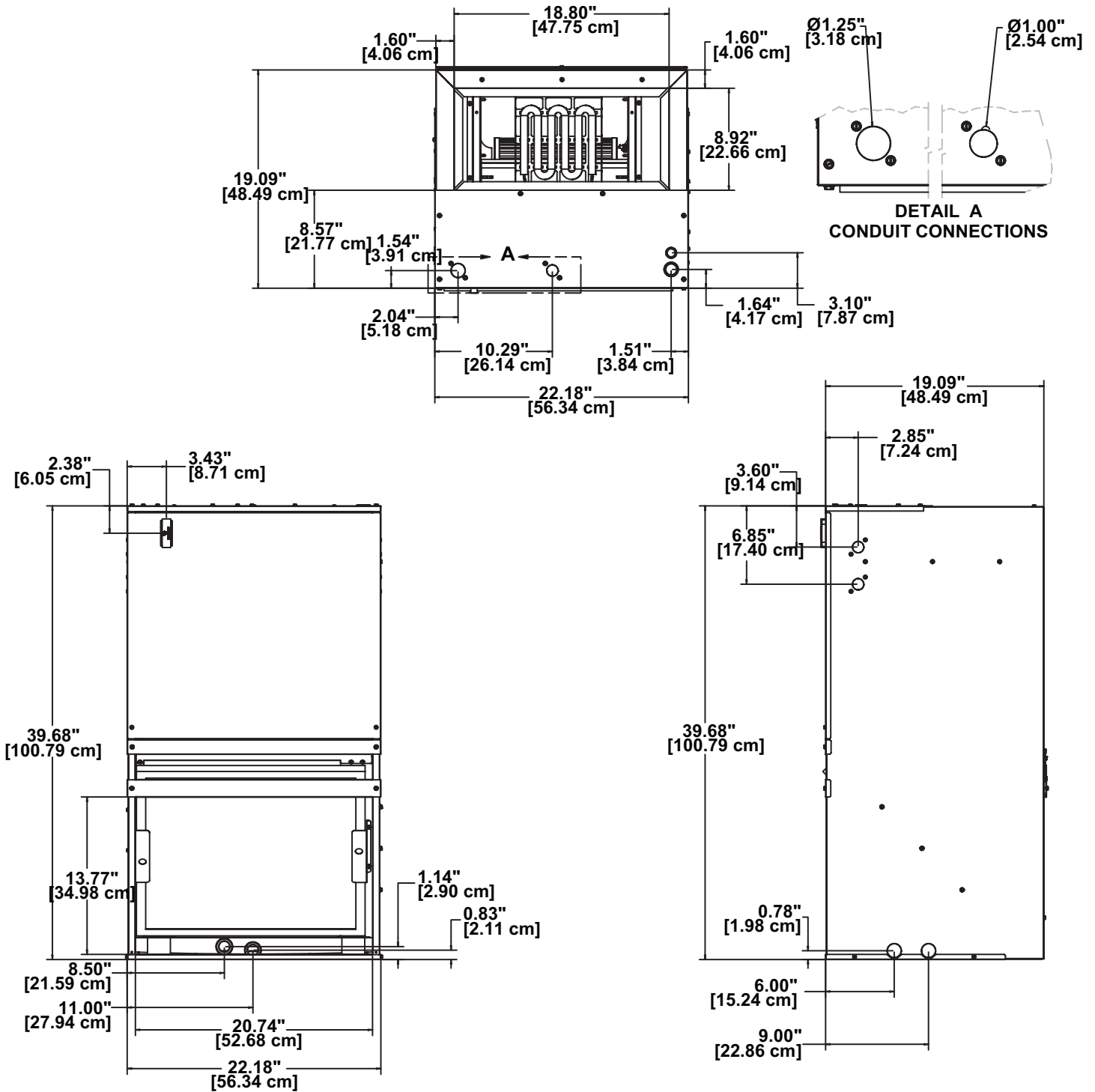
# UCS ELECTRIC HEAT SERIES

UCS\*

WALL MOUNT FAN COILS

## PHYSICAL DATA

SIZE 30/32/36/37



In keeping with its policy of continuous progress and product improvement, First Co. reserves the right to make changes without notice.

# UCS ELECTRIC HEAT SERIES



## WALL MOUNT FAN COILS

### GENERAL DATA

#### PSC & ECM WALL MOUNT FAN COILS

GENERAL DATA UCS* w/ELECTRIC HEAT						
Model	18/19/20UCS*	24/25/26UCS*	30UCS*	31UCS*	32UCS*	36/37UCS*
<b>Voltage</b>	208-230/120V					
<b>Refrigerant</b>	R454B/R32/R410A <sup>1</sup>					
<b>Nominal SCFM</b>	600	800	1,000	1,000	1,000	1,000
<b>COOLING PERFORMANCE</b>						
<b>Nominal Capacity</b>	18,000	24,000	30,000	30,000	30,000	36,000
<b>OPERATION CONDITIONS</b>						
<b>Max. Static Pressure (in.w.g.)</b>	0.5					
<b>PHYSICAL DATA</b>						
<b>Evaporator Blower Motor HP</b>	<b>208-230V</b>					
	1/3 ECM			1/2 ECM		
	1/6 PSC	1/4 PSC				1/2 PSC
	<b>120V<sup>2</sup></b>					
	1/3 ECM			1/2 ECM		
	1/4 PSC	1/3 PSC				1/2 PSC
<b>Expansion Device</b>	TXv, Piston					
<b>Shipping Weight (lbs/kgs)</b>	88.0	88.0	98.0	88.0	98.0	98.0
	[39.91]	[39.91]	[44.45]	[39.91]	[44.45]	[44.45]

**NOTES:**

1. R410A available for replacement units only
2. 120V only available on units with 0kW electric heat.

# UCS ELECTRIC HEAT SERIES

## WALL MOUNT FAN COILS

### PERFORMANCE DATA

#### ELECTRIC HEAT w/ECM MOTOR

UCS* w/ELECTRIC HEAT, ECM BLOWER													
UNIT MODEL	NOM. CFM	CAPACITY BTUH	ELECTRIC HEAT OPTION	ELECTRIC HEAT CAPACITY				TOTAL AMPS		MIN. AMPACITY		MAX. OVERCURRENT PROTECTION	
				kW		BTUH		240V	208V	240V	208V	240V	208V
				240V	208V	240V	208V						
18UCS* 19UCS* 20UCS*	600	18,000	0	0.0	0.0	0.0	0.0	2.80	2.80	4.0	4.0	15.0	15.0
			3	3.0	2.30	10,200	6,800	15.30	13.60	20.0	18.0	20.0	20.0
			5	5.0	3.80	17,000	13,600	23.60	20.80	30.0	27.0	30.0	30.0
			8	8.0	6.0	27,200	20,400	36.10	31.60	46.0	40.0	50.0	40.0
			10	10.0	7.50	34,100	25,500	44.50	38.90	56.0	49.0	60.0	50.0
24UCS* 25UCS* 26UCS*	800	24,000	0	0.0	0.0	0	0	2.80	2.80	4.0	4.0	15.0	15.0
			3	3.0	2.30	10,200	6,000	15.30	13.60	20.0	18.0	20.0	20.0
			5	5.0	3.80	17,000	13,600	23.60	20.80	30.0	27.0	30.0	30.0
			8	8.0	6.0	27,200	20,400	36.10	31.60	46.0	40.0	50.0	40.0
			10	10.0	7.50	34,100	25,500	45.80	40.20	58.0	50.0	60.0	50.0
30UCS* 31UCS* 32UCS*	1,000	30,000	0	0.0	0	0	0	4.10	4.10	6.0	6.0	15.0	15.0
			3	3.0	2.30	10,200	6,800	16.60	14.90	21.0	19.0	25.0	20.0
			5	5.0	3.80	17,000	13,600	24.90	22.10	32.0	28.0	35.0	30.0
			8	8.0	6.0	27,200	20,400	37.40	32.90	47.0	42.0	50.0	45.0
			10	10.0	7.50	34,100	25,500	47.70	42.10	60.0	53.0	60.0	60.0
36UCS* 37UCS*	1,200	36,000	0	0.0	0	0	0	4.10	4.10	6.0	6.0	15.0	15.0
			3	3.0	2.3	10,200	6,000	16.60	14.90	21.0	19.0	25.0	20.0
			5	5.0	3.8	17,000	13,600	24.90	22.10	32.0	28.0	35.0	30.0
			8	8.0	6.0	27,200	20,400	37.40	32.90	47.0	42.0	50.0	45.0
			10	10.0	7.5	34,100	25,500	45.80	40.20	58.0	50.0	60.0	50.0

**NOTES:**

- 0 - 10 kW electric heaters available for all UCS models.
- Heater kits are available for installing electric heat in the field.
- Contact factory for correct matches with outdoor units.
- Evaluated and listed for operation with no minimum clearance to combustible materials.

In keeping with its policy of continuous progress and product improvement, First Co. reserves the right to make changes without notice.

# UCS ELECTRIC HEAT SERIES

## WALL MOUNT FAN COILS

### PERFORMANCE DATA DATA

#### ELECTRIC HEAT w/PSC MOTOR

UCS* w/ELECTRIC HEAT, PSC BLOWER													
UNIT MODEL	NOM. CFM	CAPACITY BTUH	ELECTRIC HEAT OPTION	ELECTRIC HEAT CAPACITY				TOTAL AMPS		MIN. AMPACITY		MAX. OVERCURRENT PROTECTION	
				kW		BTUH		240V	208V	240V	208V	240V	208V
				240V	208V	240V	208V						
18UCS* 19UCS* 20UCS*	600	18,000	0	0.0	0.0	0.0	0.0	1.70	1.70	2.0	2.0	15.0	15.0
			3	3.0	2.30	10,200	7,700	14.0	12.80	18.0	16.0	20.0	20.0
			5	5.0	3.80	17,000	12,900	22.0	18.0	27.0	25.0	30.0	30.0
			8	8.0	6.0	27,300	20,700	34.0	29.0	43.0	37.0	45.0	40.0
			10	10.0	7.50	34,100	25,500	43.0	37.80	54.0	47.0	60.0	50.0
24UCS* 25UCS* 26UCS*	800	24,000	0	0.0	0.0	0	0	2.0	2.0	3.0	3.0	15.0	15.0
			3	3.0	2.30	10,200	7,700	15.0	15.0	18.0	16.0	20.0	20.0
			5	5.0	3.80	17,000	12,900	23.0	20.0	28.0	26.0	30.0	30.0
			8	8.0	6.0	27,300	20,700	35.0	30.6	44.0	38.0	45.0	40.0
			10	10.0	7.50	34,100	25,500	43.0	37.80	54.0	47.0	60.0	50.0
30UCS* 31UCS* 32UCS*	1,000	30,000	0	0.0	0	0	0.0	2.0	2.0	3.0	3.0	15.0	15.0
			3	3.0	2.30	10,200	7,700	15.0	15.0	18.0	18.0	25.0	20.0
			5	5.0	3.80	17,000	12,900	23.0	20.0	28.0	26.0	35.0	30.0
			8	8.0	6.0	27,200	20,700	35.0	30.60	44.0	38.0	45.0	40.0
			10	10.0	7.50	34,100	25,500	44.0	38.0	55.0	48.0	60.0	60.0
36UCS* 37UCS*	1,200	36,000	0	0.0	0	0	0	2.5	2.50	4.0	4.0	15.0	15.0
			3	3.0	2.3	10,200	7,700	1.6	15.70	19.0	17.0	20.0	20.0
			5	5.0	3.8	17,000	12,900	23.0	20.0	29.0	26.0	30.0	30.0
			8	8.0	6.0	27,300	20,700	35.0	31.0	44.0	39.0	45.0	40.0
			10	10.0	7.5	34,100	25,500	44.0	38.0	55.0	48.0	60.0	50.0

**NOTES:**

1. 0 - 10 kW electric heaters available for all UCS models.
2. Heater kits are available for installing electric heat in the field.
3. Contact factory for correct matches with outdoor units.
4. Evaluated and listed for operation with no minimum clearance to combustible materials.

In keeping with its policy of continuous progress and product improvement, First Co. reserves the right to make changes without notice.

# UCS ELECTRIC HEAT SERIES

## WALL MOUNT FAN COILS

### BLOWER DATA

#### ELECTRIC HEAT w/ECM MOTOR

BLOWER PERFORMANCE: 208-230V WITH ECM BLOWER								
UNIT MODEL	CAPACITY (BTUH)	MOTOR HP (208-230V)	TAP	CFM VS. EXTERNAL STATIC PRESSURE				
				0.1	0.2	0.3	0.4	0.5
18UCS*X	18,000	1/3	T5	880.0	850.0	830.0	800.0	770.0
			T4	700.0	670.0	640.0	610.0	570.0
			T1,T2,T3	630.0	590.0	560.0	520.0	490.0
19UCS*X	18,000	1/3	T5	800.0	770.0	750.0	720.0	690.0
			T4	650.0	610.0	580.0	550.0	520.0
			T1,T2,T3	580.0	540.0	510.0	480.0	440.0
20UCS*X	18,000	1/3	T5	710.0	680.0	660.0	640.0	620.0
			T4	570.0	550.0	520.0	490.0	470.0
			T1,T2,T3	520.0	490.0	460.0	430.0	400.0
24UCS*X	24,000	1/3	T5	1,040	1,020	1,000	970.0	940.0
			T4	910.0	890.0	860.0	830.0	810.0
			T3	780.0	760.0	730.0	700.0	670.0
			T1,T2	680.0	650.0	620.0	590.0	550.0
25UCS*X	24,000	1/3	T5	940.0	910.0	880.0	850.0	820.0
			T4	830.0	800.0	780.0	750.0	720.0
			T3	720.0	690.0	660.0	630.0	600.0
			T1,T2	630.0	600.0	570.0	530.0	500.0
26UCS*X	24,000	1/3	T5	1,070	1,060	1,040	1,020	1,000
			T4	980.0	960.0	940.0	910.0	890.0
			T3	820.0	790.0	760.0	730.0	700.0
			T1,T2	690.0	650.0	620.0	580.0	550.0

#### NOTES:

1. T4 = High Speed for all; use Violet lead.
2. T2 = Low Speed for all; use Grey lead.
3. Contact factory for correct matches with outdoor units.
4. Evaluated and listed for operation with no minimum clearance to combustible materials.
5. Add nominal .05 static if wall panel is used

In keeping with its policy of continuous progress and product improvement, First Co. reserves the right to make changes without notice.

# UCS ELECTRIC HEAT SERIES

## WALL MOUNT FAN COILS

### BLOWER DATA

#### ELECTRIC HEAT w/ECM MOTOR

BLOWER PERFORMANCE: 208-230V WITH ECM BLOWER								
UNIT MODEL	CAPACITY (BTUH)	MOTOR HP (208-230V)	TAP	CFM VS. EXTERNAL STATIC PRESSURE				
				0.1	0.2	0.3	0.4	0.5
30UCS*X	30,000	1/2	T5	1,640	1,600	1,560	1,520	1,480
			T4	1,350	1,320	1,290	1,260	1,230
			T3	1,120	1,080	1,050	1,010	970.0
			T1,T2	960.0	910.0	870.0	830.0	780.0
31UCS*X	30,000	1/2	T5	1,140	1,100	1,060	1,020	970.0
			T4	1,020	990.0	960.0	930.0	900.0
			T3	840.0	810.0	780.0	760.0	730.0
			T1,T2	710.0	680.0	650.0	620.0	580.0
32UCS*X	30,000	1/2	T5	1,570	1,540	1,510	1,470	1,440
			T4	1,360	1,330	1,290	1,260	1,220
			T3	1,100	1,060	1,020	980.0	940.0
			T1,T2	920.0	880.0	830.0	780.0	740.0
36UCS*X	36,000	1/2	T5	1,640	1,600	1,560	1,520	1,480
			T4	1,350	1,320	1,290	1,260	1,230
			T3	1,120	1,080	1,050	1,010	970
			T1,T2	960.0	910.0	870.0	830.0	780.0
37UCS*X	36,000	1/2	T5	1,570	1,540	1,510	1,470	1,440
			T4	1,360	1,330	1,290	1,260	1,220
			T3	1,100	1,060	1,020	980.0	940.0
			T1,T2	920.0	880.0	830.0	780.0	740.0

**NOTES:**

1. T4 = High Speed for all; use Violet lead.
2. T2 = Low Speed for all; use Grey lead.
3. Contact factory for correct matches with outdoor units.
4. Evaluated and listed for operation with no minimum clearance to combustible materials.
5. Add nominal .05 static if wall panel is used

# UCS ELECTRIC HEAT SERIES

## WALL MOUNT FAN COILS

### BLOWER DATA

#### ELECTRIC HEAT w/ECM MOTOR

BLOWER PERFORMANCE: 120V WITH ECM BLOWER								
UNIT MODEL	CAPACITY (BTUH)	MOTOR HP (120V)	TAP	CFM VS. EXTERNAL STATIC PRESSURE				
				0.1	0.2	0.3	0.4	0.5
18UCS*X	18,000	1/3	T5	800.0	860.0	830.0	800.0	770.0
			T4	700.0	670.0	630.0	600.0	570.0
			T1,T2,T3	630.0	590.0	550.0	520.0	480.0
19UCS*X	18,000	1/3	T5	810.0	780.0	750.0	720.0	700.0
			T4	640.0	610.0	570.0	540.0	510.0
			T1,T2,T3	580.0	540.0	500.0	470.0	430.0
20UCS*X	18,000	1/3	T5	710.0	690.0	670.0	650.0	630.0
			T4	580.0	550.0	530.0	500.0	480.0
			T1,T2,T3	520.0	490.0	470.0	440.0	410.0
24UCS*X	24,000	1/3	T5	950.0	930.0	900.0	870.0	840.0
			T4	840.0	810.0	780.0	760.0	730.0
			T3	720.0	690.0	660.0	630.0	600.0
			T1,T2	630.0	590.0	560.0	520.0	490.0
25UCS*X	24,000	1/3	T5	1,040	1,010	980.0	960.0	930.0
			T4	920.0	890.0	860.0	840.0	810.0
			T3	790.0	760.0	730.0	700.0	670.0
			T1,T2	680.0	650.0	620.0	580.0	550.0
26UCS*X	24,000	1/3	T5	1,000	980.0	950.0	920.0	890.0
			T4	880.0	850.0	820.0	800.0	770.0
			T3	750.0	720.0	690.0	670.0	640.0
			T1,T2	660.0	620.0	590.0	560.0	530.0

**NOTES:**

1. T4 = High Speed for all; use Violet lead.
2. T2 = Low Speed for all; use Grey lead.
3. Contact factory for correct matches with outdoor units.
4. Evaluated and listed for operation with no minimum clearance to combustible materials.
5. Add nominal .05 static if wall panel is used

In keeping with its policy of continuous progress and product improvement, First Co. reserves the right to make changes without notice.

# UCS ELECTRIC HEAT SERIES

## WALL MOUNT FAN COILS

### BLOWER DATA

#### ELECTRIC HEAT w/ECM MOTOR

BLOWER PERFORMANCE: 120V WITH ECM BLOWER								
UNIT MODEL	CAPACITY (BTUH)	MOTOR HP (120V)	TAP	CFM VS. EXTERNAL STATIC PRESSURE				
				0.1	0.2	0.3	0.4	0.5
30UCS*X	30,000	1/2	T5	1,520	1,480	1,440	1,400	1,360
			T4	1,350	1,310	1,280	1,250	1,220
			T3	1,110	1,080	1,040	1,000	970.0
			T1,T2	950.0	910.0	870.0	830.0	790.0
31UCS*X	30,000	1/2	T5	1,270	1,250	1,230	1,200	1,180
			T4	1,200	1,180	1,160	1,140	1,110
			T3	1,050	1,030	1,000	980.0	950.0
			T1,T2	920.0	890.0	970.0	840.0	810.0
32UCS*X	30,000	1/2	T5	1,440	1,400	1,360	1,320	1,280
			T4	1,320	1,290	1,250	1,220	1,190
			T3	1,100	1,060	1,020	980.0	950.0
			T1,T2	940.0	890.0	850.0	800.0	760.0
36UCS*X	36,000	1/2	T5	1,520	1,480	1,440	1,400	1,360
			T4	1,350	1,310	1,280	1,250	1,220
			T3	1,110	1,080	1,040	1,000	970.0
			T1,T2	950.0	910.0	870.0	830.0	790.0
37UCS*X	36,000	1/2	T5	1,440	1,400	1,360	1,320	1,280
			T4	1,320	1,290	1,250	1,220	1,190
			T3	1,100	1,060	1,020	980.0	950.0
			T1,T2	940.0	890.0	850.0	800.0	760.0

#### NOTES:

1. T4 = High Speed for all; use Violet lead.
2. T2 = Low Speed for all; use Grey lead.
3. Contact factory for correct matches with outdoor units.
4. Evaluated and listed for operation with no minimum clearance to combustible materials.
5. Add nominal .05 static if wall panel is used

In keeping with its policy of continuous progress and product improvement, First Co. reserves the right to make changes without notice.

# UCS ELECTRIC HEAT SERIES

## WALL MOUNT FAN COILS

### BLOWER DATA

#### ELECTRIC HEAT w/PSC MOTOR

BLOWER PERFORMANCE: 208-230V WITH PSC BLOWER								
UNIT MOD-EL	CAPACITY (BTUH)	MOTOR HP (208-230V)	TAP	STATIC PRESSURE (SCFM VS STATIC)				
				0.1	0.2	0.3	0.4	0.5
18UCS*0	18,000	1/6	High	900.0	870.0	820.0	780.0	730.0
			Med	720.0	690.0	660.0	630.0	590.0
			Low	550.0	530.0	500.0	470.0	430.0
19UCS*0	18,000	1/6	High	730.0	700.0	660.0	630.0	590.0
			Med	640.0	600.0	570.0	540.0	510.0
			Low	490.0	460.0	430.0	400.0	370.0
20UCS*0	18,000	1/6	High	650.0	610.0	570.0	530.0	490.0
			Med	560.0	530.0	490.0	450.0	420.0
			Low	530.0	510.0	500.0	480.0	470.0
24UCS*0	24,000	1/4	High	1,010	970.0	930.0	880.0	830.0
			Med-High	910.0	880.0	840.0	800.0	750.0
			Med-Low	830.0	810.0	770.0	740.0	710.0
			Low	530.0	510.0	500.0	480.0	470.0
25UCS*0	24,000	1/4	High	890.0	850.0	810.0	760.0	720.0
			Med-High	830.0	780.0	750.0	700.0	660.0
			Med-Low	770.0	730.0	700.0	660.0	610.0
			Low	570.0	550.0	510.0	480.0	450.0
26UCS*0	24,000	1/4	High	890.0	840.0	790.0	730.0	680.0
			Med-High	800.0	750.0	710.0	660.0	600.0
			Med-Low	740.0	700.0	650.0	600.0	550.0
			Low	520.0	490.0	450.0	410.0	370.0

**NOTES:**

1. Add nominal .05 static if wall panel is used.
2. Contact factory for correct matches with outdoor units.
3. Evaluated and listed for operation with no minimum clearance to combustible materials

# UCS ELECTRIC HEAT SERIES

## WALL MOUNT FAN COILS

### BLOWER DATA

#### ELECTRIC HEAT w/PSC MOTOR

BLOWER PERFORMANCE: 208-230V WITH PSC BLOWER								
UNIT MOD-EL	CAPACITY (BTUH)	MOTOR HP (208-230V)	TAP	STATIC PRESSURE (SCFM VS STATIC)				
				0.1	0.2	0.3	0.4	0.5
30UCS*0	30,000	1/4	High	1,360	1,300	1,240	1,180	1,110
			Med-High	1,160	1,120	1,090	1,040	980.0
			Med-Low	1,040	1,020	1,000	960.0	910.0
			Low	650.0	630.0	600.0	580.0	550.0
31UCS*0	30,000	1/4	High	890.0	840.0	790.0	730.0	680.0
			Med-High	800.0	750.0	710.0	660.0	600.0
			Med-Low	740.0	700.0	650.0	600.0	550.0
			Low	520.0	490.0	450.0	410.0	370.0
32UCS*0	30,000	1/4	High	1,200	1,140	1,070	1,020	950.0
			Med-High	1,110	1,060	1,010	950.0	890.0
			Med-Low	1,050	1,000	960.0	900.0	860.0
			Low	690.0	660.0	640.0	620.0	590.0
36UCS*0	36,000	1/2	High	1,500	1,430	1,360	1,270	1,200
			Med-High	1,430	1,370	1,300	1,220	1,150
			Med-Low	1,270	1,230	1,180	1,130	1,070
			Low	1,100	1,080	1,050	1,020	970
37UCS*0	36,000	1/2	High	1,290	1,230	1,170	1,100	1,040
			Med-High	1,260	1,200	1,140	1,080	1,010
			Med-Low	1,210	1,160	1,100	1,040	970.0
			Low	1,160	1,110	1,060	1,000	940.0

#### NOTES:

1. Add nominal .05 static if wall panel is used.
2. Contact factory for correct matches with outdoor units.
3. Evaluated and listed for operation with no minimum clearance to combustible materials

# UCS ELECTRIC HEAT SERIES

## WALL MOUNT FAN COILS

### BLOWER DATA

#### ELECTRIC HEAT w/PSC MOTOR

BLOWER PERFORMANCE: 120V WITH PSC BLOWER								
Unit Model	Nom. Capacity (BTU/h)	Motor HP (120V)	Tap	Static Pressure (SCFM VS Static)				
				0.1	0.2	0.3	0.4	0.5
18UCS*0	18,000	1/4	High	1,030	990.0	940.0	890.0	840.0
			Med-High	980.0	930.0	890.0	850.0	800.0
			Med-Low	800.0	780.0	760.0	720.0	680.0
			Low	660.0	650.0	620.0	600.0	580.0
19UCS*0	18,000	1/4	High	950.0	910.0	870.0	810.0	750.0
			Med-High	890.0	860.0	820.0	770.0	720.0
			Med-Low	730.0	710.0	680.0	640.0	600.0
			Low	590.0	570.0	550.0	530.0	490.0
20UCS*0	18,000	1/4	High	740.0	710.0	670.0	620.0	580.0
			Med-High	720.0	690.0	650.0	610.0	560.0
			Med-Low	650.0	620.0	590.0	550.0	510.0
			Low	560.0	540.0	520.0	490.0	460.0
24UCS*0	24,000	1/3	High	980.0	940.0	890.0	850.0	800.0
			Med-High	900.0	860.0	830.0	780.0	730.0
			Med-Low	790.0	760.0	720.0	690.0	650.0
			Low	620.0	590.0	560.0	530.0	500.0
25UCS*0	24,000	1/3	High	800.0	750.0	710.0	660.0	610.0
			Med-High	750.0	700.0	660.0	610.0	560.0
			Med-Low	650.0	600.0	560.0	510.0	470.0
			Low	510.0	470.0	430.0	380.0	330.0
26UCS*0	24,000	1/3	High	990.0	940.0	890.0	830.0	780.0
			Med-High	910.0	870.0	830.0	780.0	730.0
			Med-Low	800.0	760.0	730.0	690.0	650.0
			Low	600.0	590.0	560.0	530.0	500.0

**NOTES:**

1. Add nominal .05 static if wall panel is used.
2. Contact factory for correct matches with outdoor units.
3. Evaluated and listed for operation with no minimum clearance to combustible materials

In keeping with its policy of continuous progress and product improvement, First Co. reserves the right to make changes without notice.

# UCS ELECTRIC HEAT SERIES

## WALL MOUNT FAN COILS

### BLOWER DATA

#### ELECTRIC HEAT w/PSC MOTOR

BLOWER PERFORMANCE: 120V WITH PSC BLOWER								
Unit Model	Nom. Capacity (BTU/h)	Motor HP (120V)	Tap	Static Pressure (SCFM VS Static)				
				0.1	0.2	0.3	0.4	0.5
30UCS*0	30,000	1/3	High	1,400	1,340	1,280	1,220	1,140
			Low	1,230	1,200	1,160	1,110	1,050
31UCS*0	30,000	1/3	High	990.0	940.0	890.0	830.0	780.0
			Med-High	910.0	870.0	830.0	780.0	730.0
			Med-Low	800.0	760.0	730.0	690.0	650.0
			Low	600.0	590.0	560.0	530.0	500.0
32UCS*0	30,000	1/3	High	1,280	1,220	1,140	1,070	1,000
			Low	1,210	1,150	1,090	1,010	950.0
36UCS*0	36,000	1/2	High	1,460	1,400	1,330	1,260	1,190
			Med	1,400	1,340	1,280	1,220	1,150
			Low	1,250	1,210	1,160	1,100	1,040
37UCS*0	36,000	1/2	High	1,280	1,210	1,150	1,080	1,010
			Med	1,250	1,190	1,120	1,060	990.0
			Low	1,180	1,120	1,060	990.0	930.0

#### NOTES:

1. Add nominal .05 static if wall panel is used.
2. Contact factory for correct matches with outdoor units.
3. Evaluated and listed for operation with no minimum clearance to combustible materials



*AMERICAN MADE. FAMILY OWNED.*



FIRST CO.  
P.O. BOX 270969 - DALLAS, TEXAS 75227  
PH. (214) 388-5751 | FAX (214) 388-2255  
[WWW.FIRSTCO.COM](http://WWW.FIRSTCO.COM)

**MARCH 2026**