

First Co.

WCX2, WCR2 SERIES

Through-The-Wall Split Condensing Unit

1.0 - 2.50 Tons

12 SEER2

Standard Cooling Only

R-454B, R-32



TABLE OF CONTENTS

NOMENCLATURE3

SERIES FEATURES4

PHYSICAL DATA5

ELECTRICAL & EXTENDED PERFORMANCE DATA6

BA SERIES PHYSICAL DIMENSIONS.....7

BA SERIES MAJOR COMPONENTS8

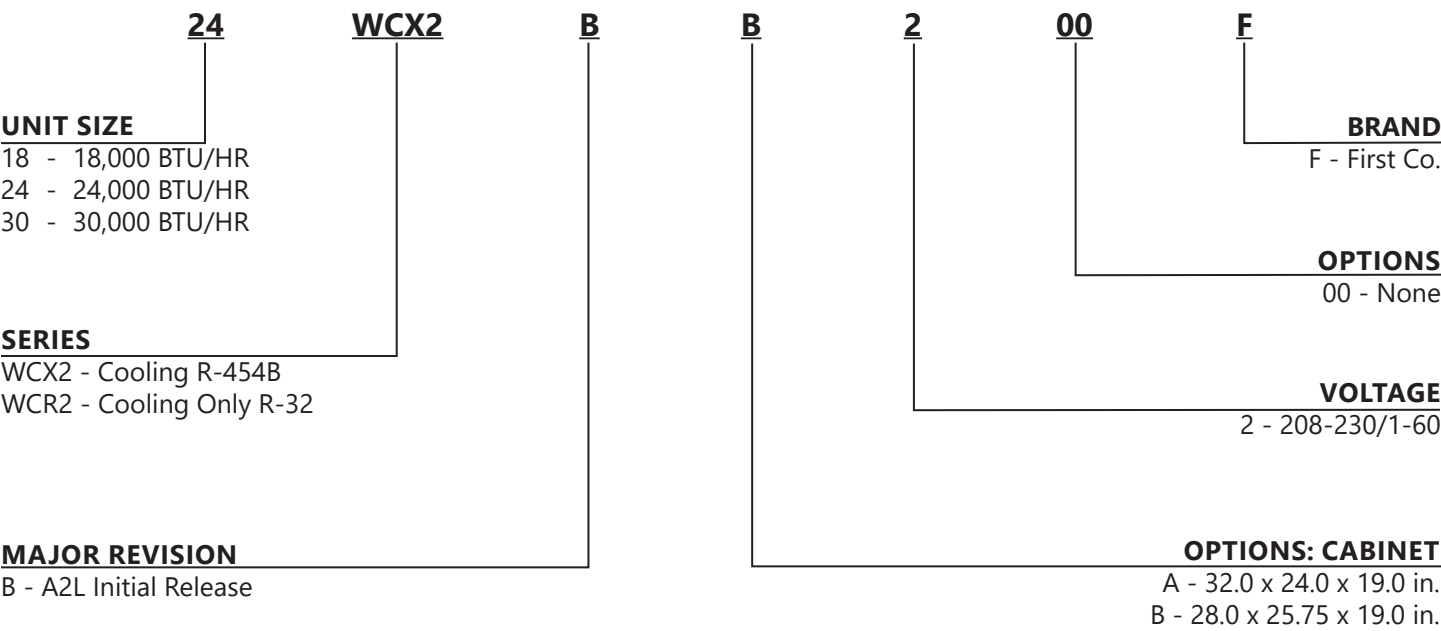
BA SERIES ACCESSORIES.....9-11

BB SERIES PHYSICAL DIMENSIONS 12

BB SERIES MAJOR COMPONENTS..... 13

BB SERIES ACCESORIES..... 14

NOMENCLATURE



WCX2, WCR2 SERIES

THROUGH-THE-WALL SPLIT CONDENSING UNIT

SERIES FEATURES

APPLICATIONS

These condensing units are great replacement options for the many existing through-the-wall condensing units in the field. WCX and WCR2 units are sold for use only with blower coil and air handler units that have ECM motors.

It's the customer's responsibility to make sure their indoor coil is compatible with these products and to confirm which expansion valves, if any, are needed for proper operation.

STANDARD FEATURES

- WCX2 and WCR2 condensing units are installed on the same floor as the apartment, townhome, or condominium, which provides significant first-cost savings in refrigerant, piping, and electrical wiring compared to units installed on the ground or roof. Being on the same floor also makes them much easier to service, and routine maintenance can be performed by a single person.
- Factory charged with A2L refrigerant; final charge must be field-adjusted during installation.
- Unique Cabinet Design – Side panels fit inside the base pan rather than outside, helping contain water along the sides of the cabinet.
- Extra-high efficiency scroll or reciprocating A2L compressor provides reliable performance and improved energy efficiency with A2L refrigerants.
- High-pressure switch protects the system by shutting down operation if refrigerant pressure rises above safe limits.
- Propeller-Type Fan – Moves more air across the condenser coil while using less power than a standard "squirrel-cage" blower.
- Sloped base pan promotes positive water drainage from the unit to the building exterior.
- Plastic-coated coil guard provides durable protection for the condenser coil against damage and corrosion.

A2L Refrigerant Compatibility – A2L refrigerant oil is not compatible with R-410A or R-22 oil. When replacing an existing R-410A or R-22 outdoor unit with an A2L unit:

- The indoor evaporator coil must be replaced with a new one.
- The coil must include an A2L TXV.
- All interconnecting refrigerant lines must be flushed.

BENEFITS OVER TRADITIONAL SPLIT SYSTEMS

- Easier to Service – Routine maintenance can be performed by a single person.
- Eliminates Theft Concerns – Units are installed inside or on the same floor, reducing accessibility.
- No Landscaping Costs – No need to hide units with shrubs or enclosures.
- No Support Pads Required – Avoids the expense of concrete or structural pads.
- No Additional Roof Support Needed – Saves on structural reinforcement costs.
- No Chaseways Required – Refrigerant lines do not need to run to the roof or ground, simplifying installation.

WARRANTY

Five (5) year limited warranty on compressor and one (1) year limited warranty on parts.

WCX2, WCR2 SERIES

THROUGH-THE-WALL SPLIT CONDENSING UNIT

PHYSICAL DATA

BA AND BB SERIES

WCX2 AND WCR2												
Model	BA Series						BB Series					
	WCX			WCR			WCX			WCR		
	18	24	30	18	24	30	18	24	30	18	24	30
Refrigerant	R-454B			R-32			R-454B			R-32		
Voltage	208-230/1-60											
Compressor Type/Qty	Scroll (1)											
COOLING PERFORMANCE												
	BA Series						BB Series					
	WCX			WCR			WCX			WCR		
	18	24	30	18	24	30	18	24	30	18	24	30
Rated Capacity (BTU/H)	18,000	23,600	27,600	18,000	23,600	27,400	18,000	23,600	27,000	18,000	24,000	27,800
EER2	10.20	10.10	10.50	10.20	10.10	10.10	10.20	10.10	10.10	10.20	10.10	10.10
SEER2*	11.70	11.70	11.70	11.70	11.70	11.70	11.70	11.70	11.70	11.70	11.70	11.70
Sensible Heat Ratio	0.74	0.76	0.77	0.74	0.76	0.77	0.74	0.76	0.77	0.74	0.76	0.77
Rated SCFM	525.0	750.0	875.0	525.0	750.0	875.0	525.0	750.0	875.0	525.0	750.0	875.0
OPERATION CONDITIONS												
Outdoor Ambient Operating Range (DB)	Cooling °F [°C]	Min.	60.0 [15.56]									
		Max.	115.0 [46.11]									

NOTE: *Coil rating only

WCX2, WCR2 PHYSICAL DATA								
Model			BA Series			BB Series		
			18WC*2-BA	24WC*2-BA	30WC*2-BA	18WC*2-BB	24WC*2-BB	30WC*2-BB
Condenser Fan Motor			PSC	PSC	ECM	PSC	PSC	ECM
Factory Refrigerant Charge	R-454B	lbs.	3.50	3.50	3.50	3.50	3.50	3.50
		kg	1.59	1.59	1.59	1.59	1.59	1.59
	R-32	lbs.	3.50	3.50	3.50	3.50	3.50	3.50
		kg	1.59	1.59	1.59	1.59	1.59	1.59
Operating Weight - (lbs) [kg]			180.0 [81.65]					
Shipping Weight - (lbs) [kg]			200.0 [90.72]					

In keeping with its policy of continuous progress and product improvement, First Co. reserves the right to make changes without notice.

WCX2, WCR2 SERIES

THROUGH-THE-WALL SPLIT CONDENSING UNIT

ELECTRICAL DATA

BA AND BB SERIES

ELECTRICAL DATA – 208/230V - 1PH - 60 HZ						
Unit Model	Compressor		Condenser Fan		Min. Cir. Ampacity (MCA)	Max. Overcurrent Protection (MOP)
	LRA	RLA	FLA	HP		
18WCX2-*	47.0	7.18	1.45	1/4	10.0	15.0
24WCX2-*	59.0	9.17	1.45	1/4	13.0	20.0
30WCX2-*	71.0	10.45	2.8	1/3	16.0	25.0
18WCR2-*	45.0	6.40	1.45	1/4	9.0	15.0
24WCR2-*	60.0	8.30	1.45	1/4	12.0	20.0
30WCR2-*	67.0	9.60	2.80	1/3	15.0	20.0

NOTE:

Compressor start assist devices are recommended on WCX and WCR scroll compressor units with long refrigerant lines, extreme temperatures, or other conditions causing slow pressure equalization or hard starts.

EXTENDED PERFORMANCE DATA

EXTENDED COOLING PERFORMANCE										
Model	Indoor Temp °F [°C] DB °F [°C] WB	Outdoor Temperature (°F) [°C]								
		65.0 [18.50]			75.0 [24.0]			85.0 [29.50]		
		BTU/H	S/T	kW	BTU/H	S/T	kW	BTU/H	S/T	kW
18WC*	75.0 [24.0] 57.0 [13.0]	17,300	1.0	1.30	16,700	1.0	1.40	16,200	1.0	1.50
	75.0 [24.0] 63.0 [17.0]	19,100	0.72	1.30	18,200	0.73	1.40	17,400	0.75	1.50
	80.0 [26.0] 67.0 [19.50]	20,500	0.69	1.20	19,500	0.70	1.40	18,700	0.73	1.50
	85.0 [24.50] 72.0 [22.0]	22,200	0.63	1.20	21,300	0.64	1.40	20,300	0.66	1.50
24WC*	75.0 [24.0] 57.0 [13.0]	23,900	1.0	1.70	23,200	1.0	1.90	21,600	1.0	2.10
	75.0 [24.0] 63.0 [17.0]	25,900	0.74	1.70	24,800	0.75	1.90	23,500	0.77	2.10
	80.0 [26.0] 67.0 [19.50]	27,700	0.71	1.70	26,400	0.73	1.90	25,100	0.74	2.10
	85.0 [24.50] 72.0 [22.0]	30,000	0.65	1.80	28,600	0.66	1.90	27,200	0.67	2.10
30WC*	75.0 [24.0] 57.0 [13.0]	27,600	1.0	2.0	25,700	1.0	2.20	24,800	1.0	2.40
	75.0 [24.0] 63.0 [17.0]	29,700	0.75	2.0	28,300	0.77	2.20	26,900	0.78	2.40
	80.0 [26.0] 67.0 [19.50]	31,500	0.72	2.0	30,200	0.74	2.20	28,900	0.76	2.40
	85.0 [24.50] 72.0 [22.0]	34,200	0.66	2.0	32,700	0.67	2.20	31,200	0.68	2.50

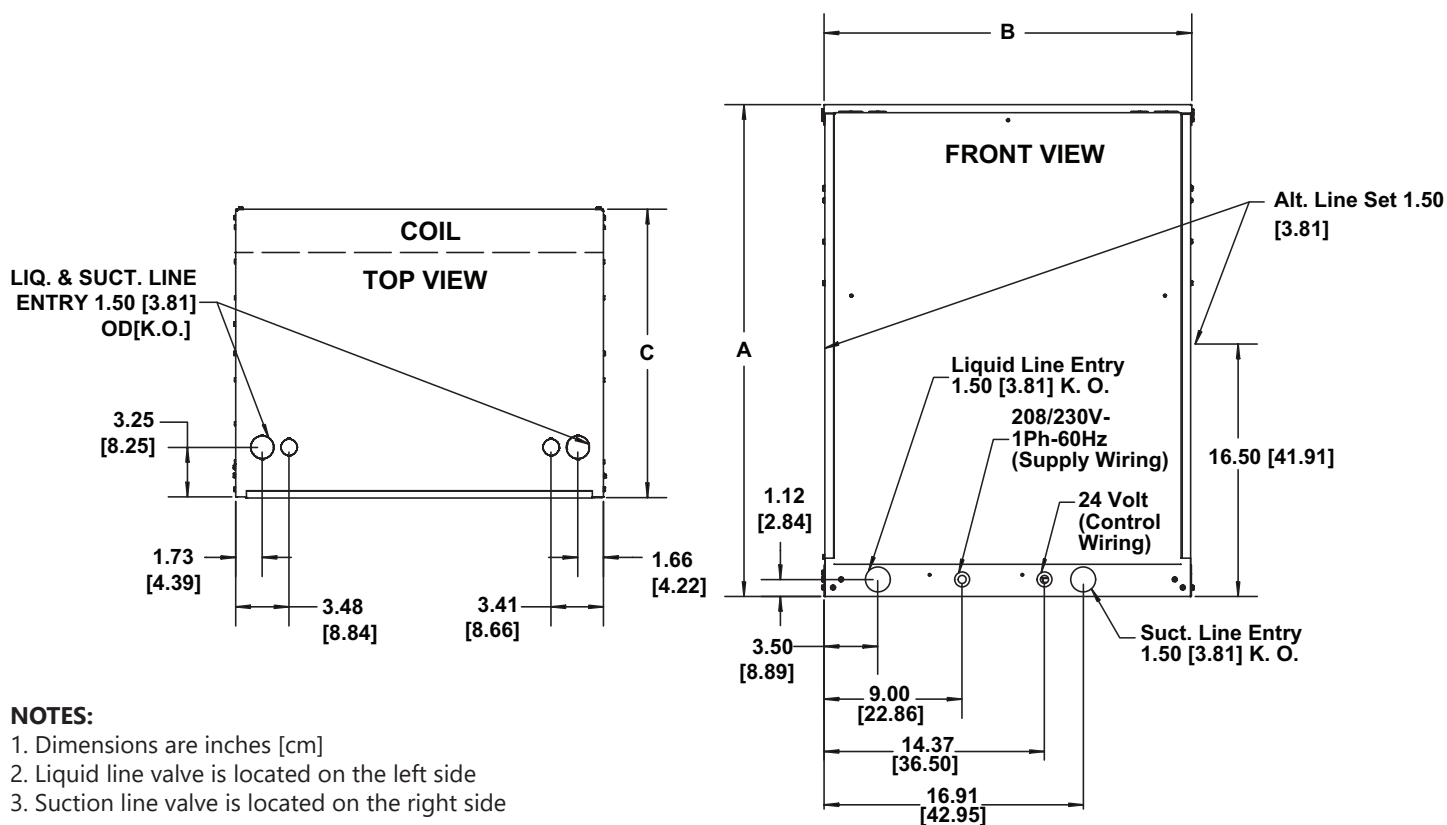
In keeping with its policy of continuous progress and product improvement, First Co. reserves the right to make changes without notice.

PHYSICAL DIMENSIONS

PHYSICAL DIMENSIONS (IN) [CM]					
Unit Model	A	B	C	Liq/Suct. Line Conn. (SWEAT)	Approx. Ship Wt. (lbs) [kg]
18WC*2-BA*	32.25 [81.92]	24.0 [60.96]	19.0 [48.26]	3/8 [0.95] I.D. 3/4 [1.91] O.D.	200.0 [90.72]
24WC*2-BA*					
30WC*2-BA*					

NOTE:

A2L refrigerant oil is not compatible with R-410A or R-22 oil. When replacing an existing R-410A or R-22 outdoor unit with an A2L unit, the indoor evaporator coil must be replaced with a new one and must include an A2L TXV. All interconnecting refrigerant lines must be flushed.



NOTES:

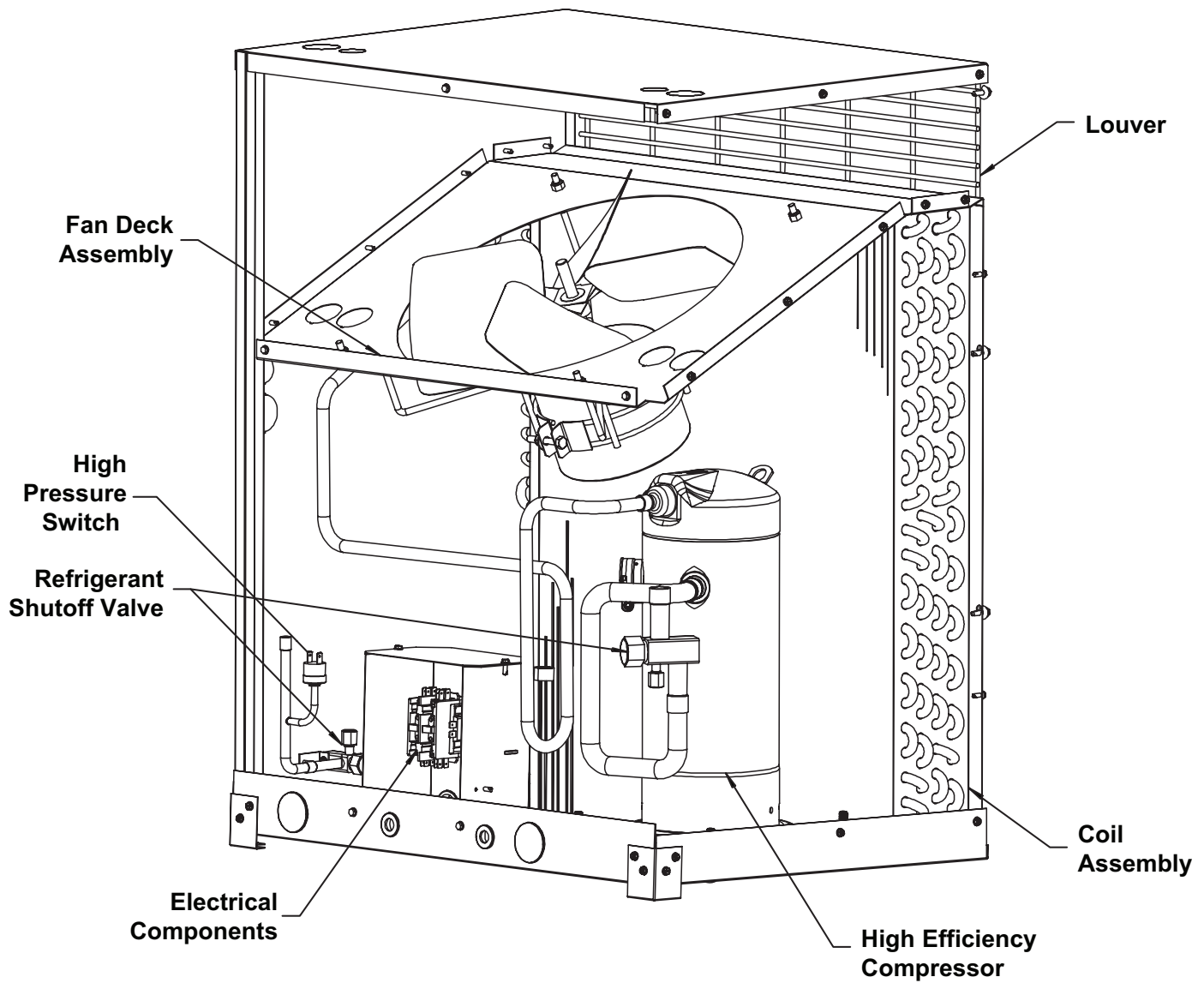
1. Dimensions are inches [cm]
2. Liquid line valve is located on the left side
3. Suction line valve is located on the right side

WCX2, WCR2 SERIES

THROUGH-THE-WALL SPLIT CONDENSING UNIT

BA SERIES

MAJOR COMPONENTS



In keeping with its policy of continuous progress and product improvement, First Co. reserves the right to make changes without notice.

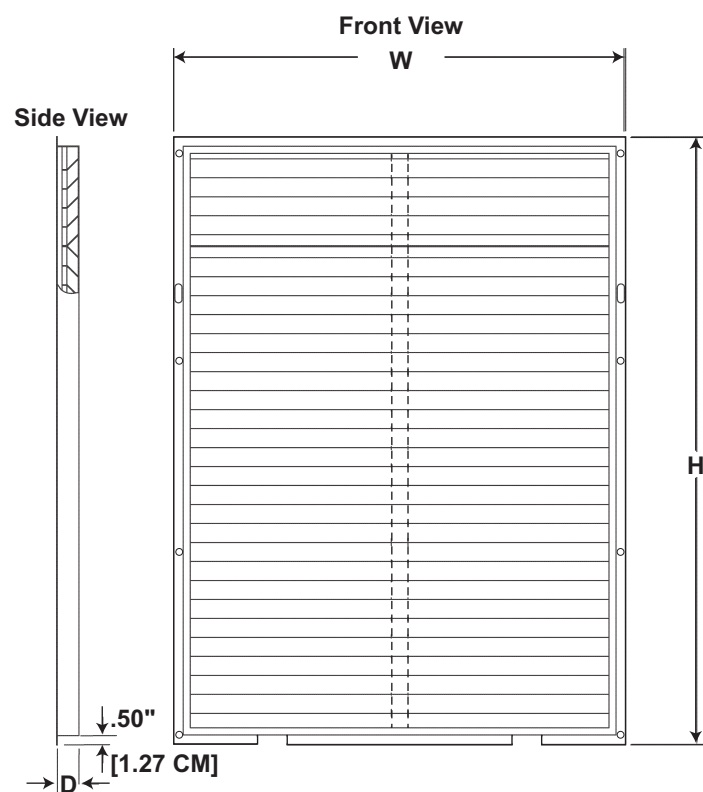
ACCESSORIES

OPTIONAL LOUVERS

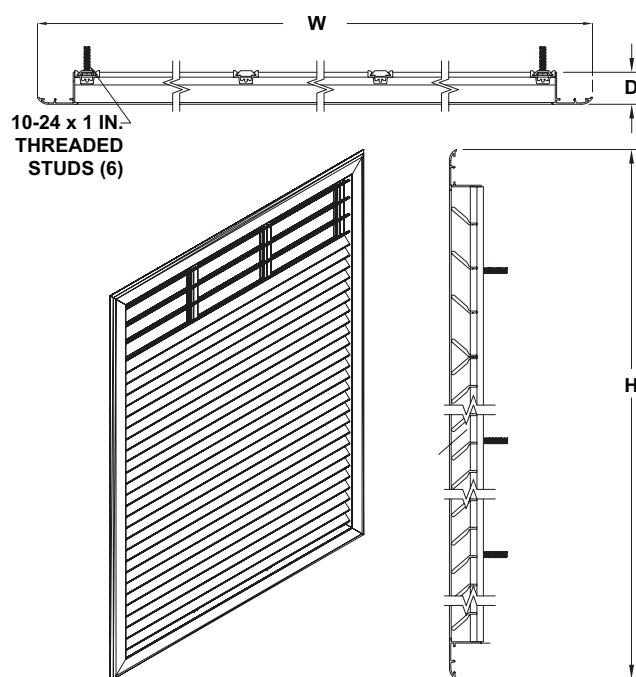
An extruded aluminum louver attaches to the outside of the wall sleeve, with blades that recess for a neat, flush appearance. Louver attachment screws are tightened from inside the wall sleeve. Important: Install the louver and tighten the screws before installing the unit into the wall sleeve.

OPTIONAL ARCHITECTURAL LOUVER (FIELD INSTALLED)				
Part	For Use On	Dimensions (in) [cm]		
		H	W	D
Standard Louver (G200A)	All "BA" models only	32.0 [81.28]	24.0 [60.96]	1.25 [3.18]
Hail Guard (G210A) (Requires Hail Guard Sleeve)	All "BA" models only	34.65 [88.01]	26.47 [67.23]	1.13 [2.87]

NOTES: Louver screws to the "face" of the condensing unit in place of the factory wire guard.



Standard Architectural Louver Dimensions
(G200A)



Hail Guard Dimensions
(G210A)

ACCESSORIES (CONT'D)

OPTIONAL LOUVERS

OPTIONAL ARCHITECTURAL LOUVER (FIELD INSTALLED)	
Part	For Use On
Standard Louver (G200A)	All "BA" models only
Hail Guard (G210A) (Requires Hail Guard Sleeve)	All "BA" models only

Louvers can be factory painted almost any color. Contact the factory for additional information and cost.

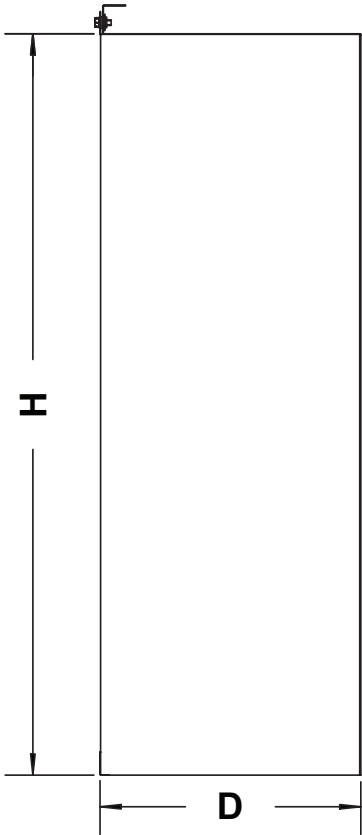
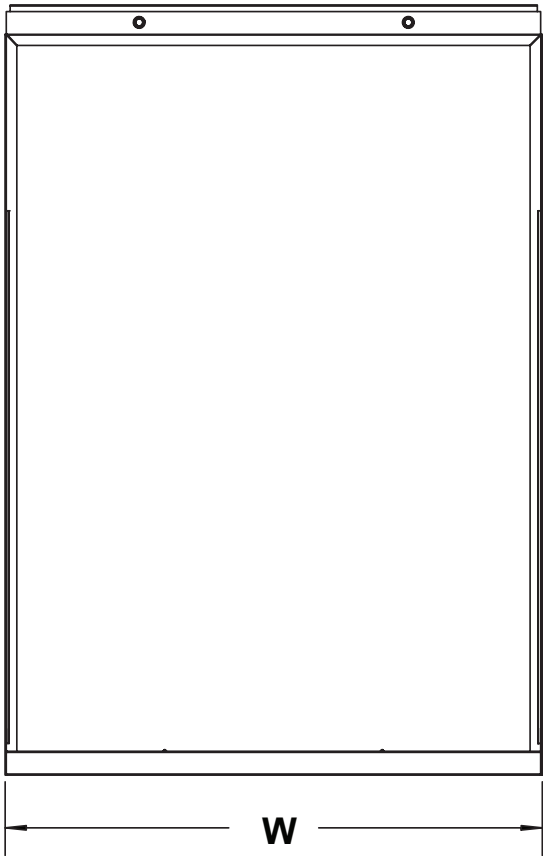


Standard Architectural Louver (G200A)

ROYAL BROWN (LF12)				
MEDIUM BRONZE (LF02)	WESTERN TAN (LF07)	CHARCOAL (LF05)	GLOSS BLACK (LF20)	SLATE BLUE (LF01)
FOREST GREEN (LF10)	ARCHITECTURAL BRONZE (LF08)	SANDSTONE (LF03)	ALMOND (LF16)	BURGUNDY (LF14)
BLACK (LF19)	CLAY (LF15)	BONE WHITE (LF06)	CAMPUS GREEN (LF21)	COASTAL WHITE (LF17)
BARN RED (LF13)	SURREY BEIGE (LF11)	REGAL BLUE (LF09)	VISTA GREEN (LF18)	LIGHT GRAY (LF04)

OPTIONAL WALL SLEEVES

OPTIONAL INSTALLATION SLEEVE(S) (SEE MATCHING LOUVER)					
Part	For Use On	Description	Dimensions (in) [cm]		
			H	W	D
Standard Wall Sleeve (part#: 928-3)	All "BA" models only	Installs during rough-in to simplify condensing unit installation and allow easy removal for service.	33.38 [84.79]	24.25 [61.60]	11.75 [29.85]
Hail Guard Wall Sleeve (part#: 928-3H)	All "BA" models only	Hail guard sleeve is required when the hail guard is used in place of a louver.	34.13 [86.69]	25.38 [64.47]	13.75 [34.93]

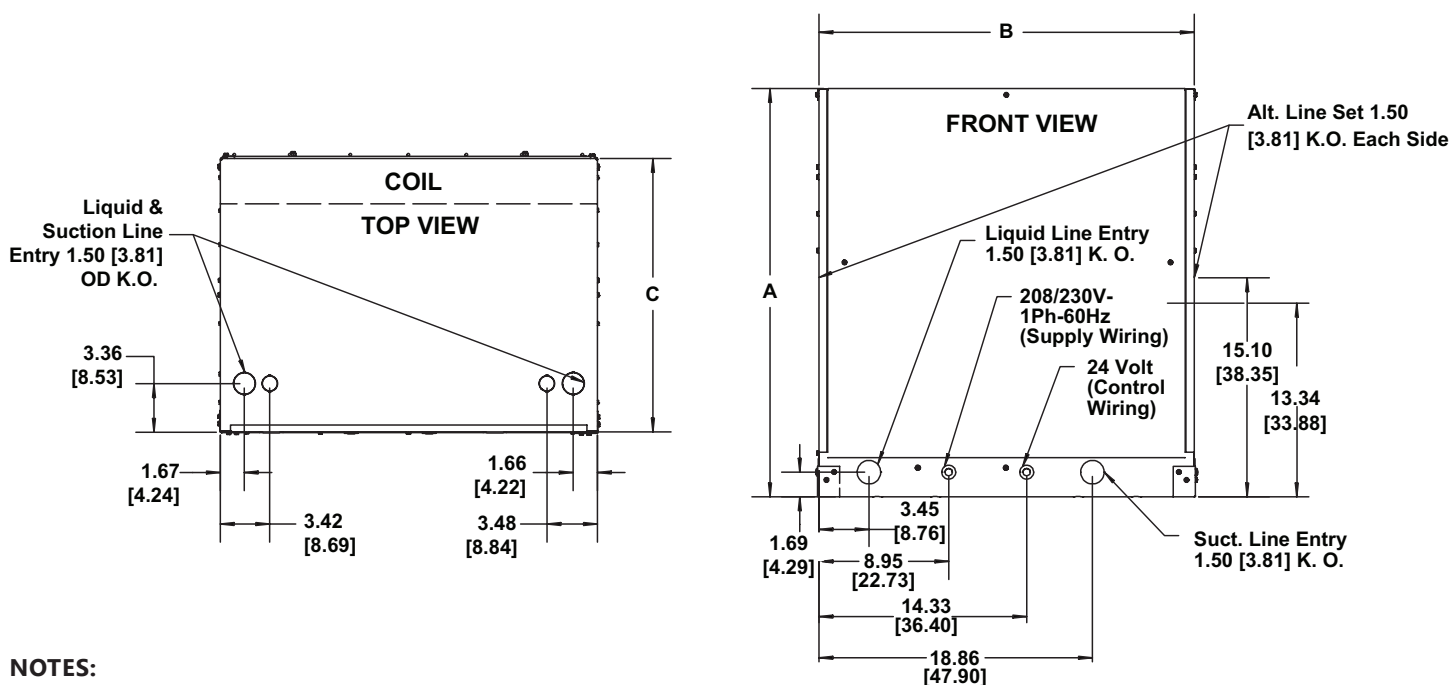


PHYSICAL DIMENSIONS

PHYSICAL DIMENSIONS (IN) [CM]					
Unit Model	A	B	C	Liq/Suct. Line Conn. (SWEAT)	Approx. Ship Wt. (lbs) [kg]
18WC*2-BB*	28.25 [71.76]	26.0 [66.04]	19.0 [48.26]	3/8 [0.95] I.D. 3/4 [1.91] O.D.	200.0 [90.72]
24WC*2-BB*					
30WC*2-BB*					

NOTE:

A2L refrigerant oil is not compatible with R-410A or R-22 oil. When replacing an existing R-410A or R-22 outdoor unit with an A2L unit, the indoor evaporator coil must be replaced with a new one and must include an A2L TXV. All interconnecting refrigerant lines must be flushed.



NOTES:

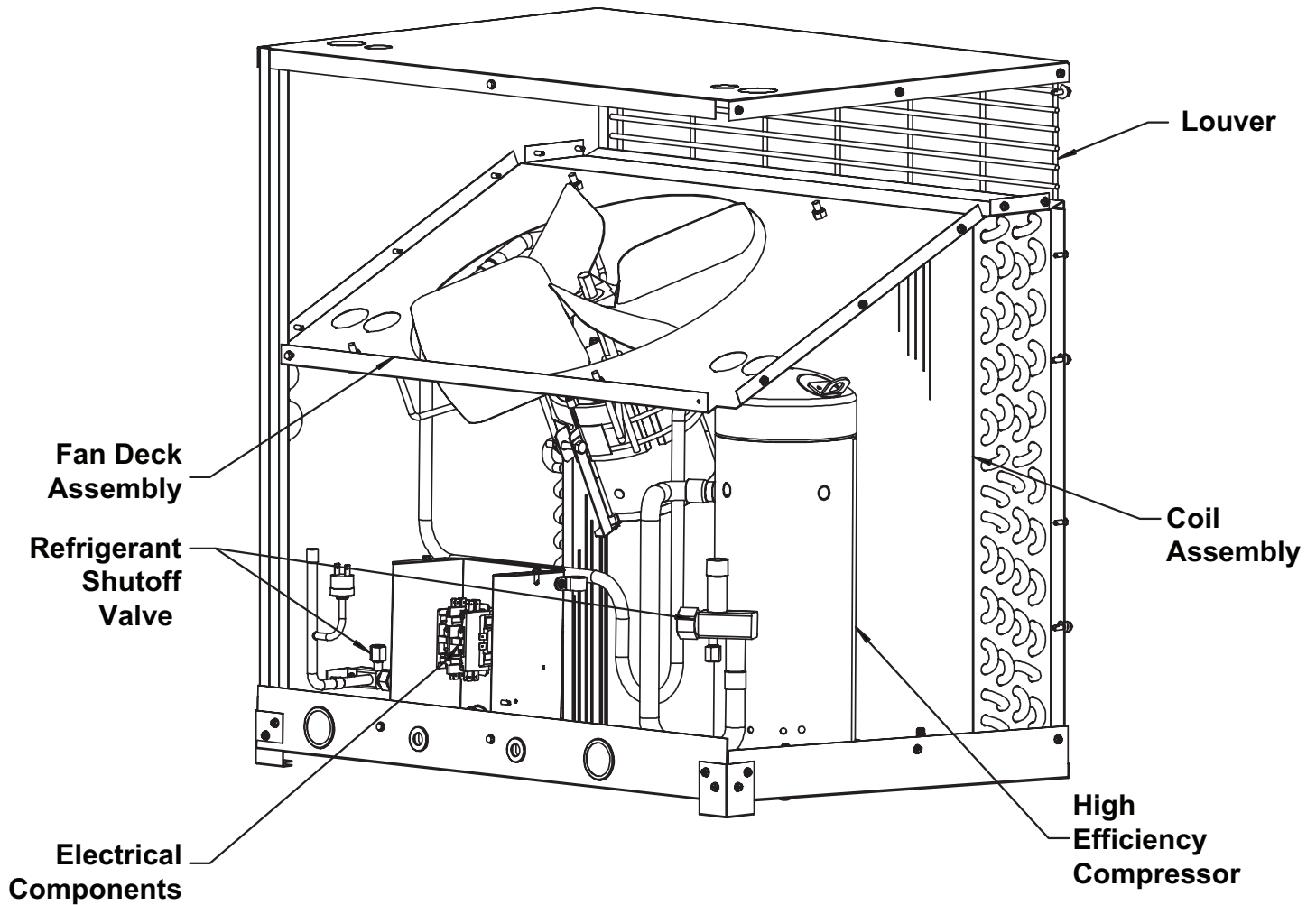
1. Dimensions are inches [cm]
2. Liquid line valve is located on the left side
3. Suction line valve is located on the right side

WCX2, WCR2 SERIES

THROUGH-THE-WALL SPLIT CONDENSING UNIT

BB SERIES

MAJOR COMPONENTS



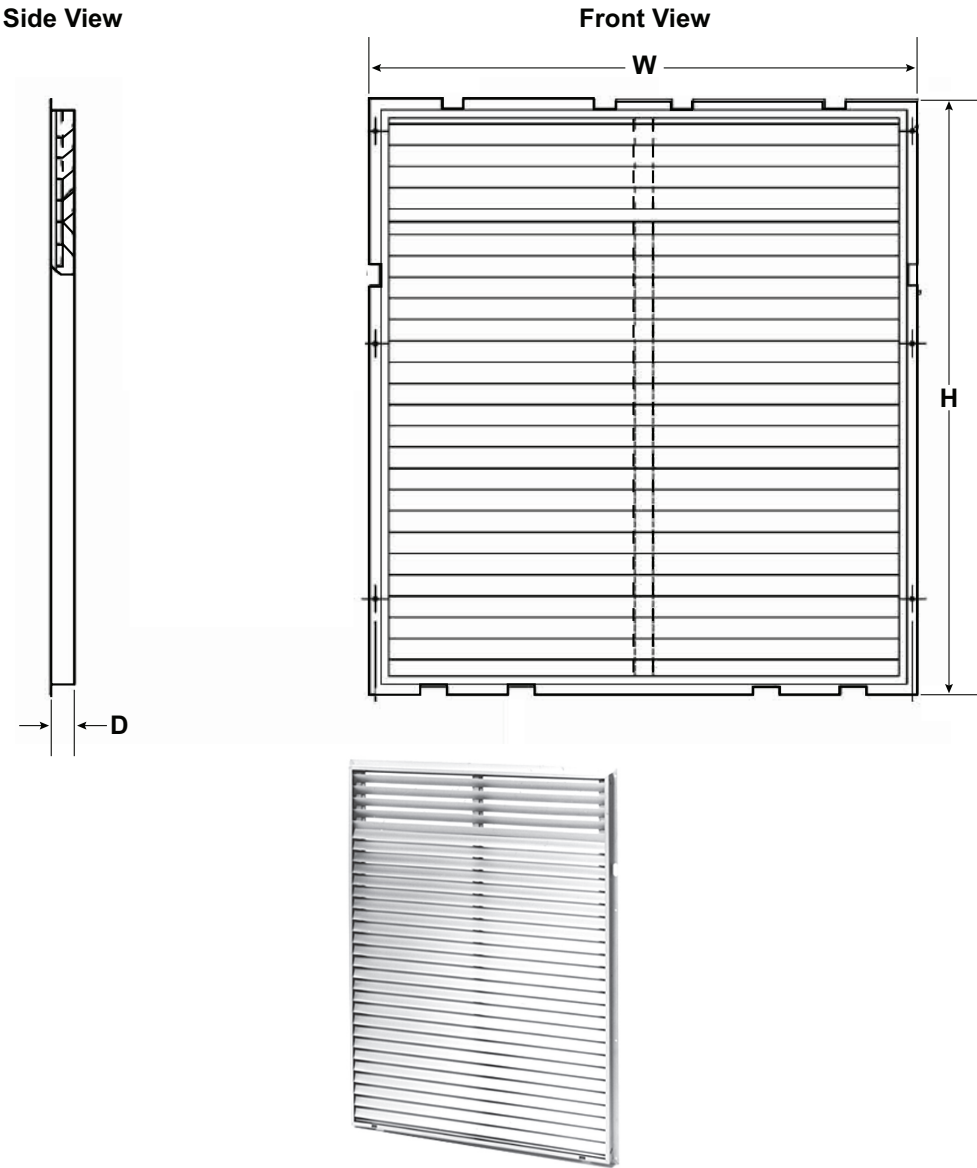
In keeping with its policy of continuous progress and product improvement, First Co. reserves the right to make changes without notice.

ACCESSORIES

OPTIONAL LOUVERS

OPTIONAL ARCHITECTURAL LOUVER (FIELD INSTALLED)				
Part Number	For use on	Dimensions (in) [cm]		
		H	W	D
G200BBA ^{1,2}	All "BB" models only	28.0 [7.12]	25.75 [65.41]	1.25 [3.18]

- NOTES:**
- G200BBA has clear anodized finish.
 - Louver screws to the "face" of the condensing unit in place of the factory wire guard.



Optional Architectural Louver (G200BBA)



AMERICAN-MADE. FAMILY OWNED.



FIRST CO.
P.O. BOX 270969 - DALLAS, TEXAS 75227
PH. (214) 388-5751 | FAX (214) 388-2255
WWW.FIRSTCO.COM

NOVEMBER 2025