



WCU Series

THRU - THE - WALL

SPLIT CONDENSING UNITS

1-1/2 thru 2-1/2 TONS

THREE MODELS NOW AVAILABLE!



Application -

The **WCU** series condensing unit is designed for recessed or "thru - the - wall" applications such as high rise apartments and condominiums.

Saves on Installation Costs -

Since the **WCU** condensing unit can be installed through an outside wall on the same floor as the apartment or condominium, considerably less copper piping, refrigerant and electrical wiring is required resulting in substantial savings over a typical roof or ground installation. Condensing unit "pads" are also not required with these models.

Easier to Service -

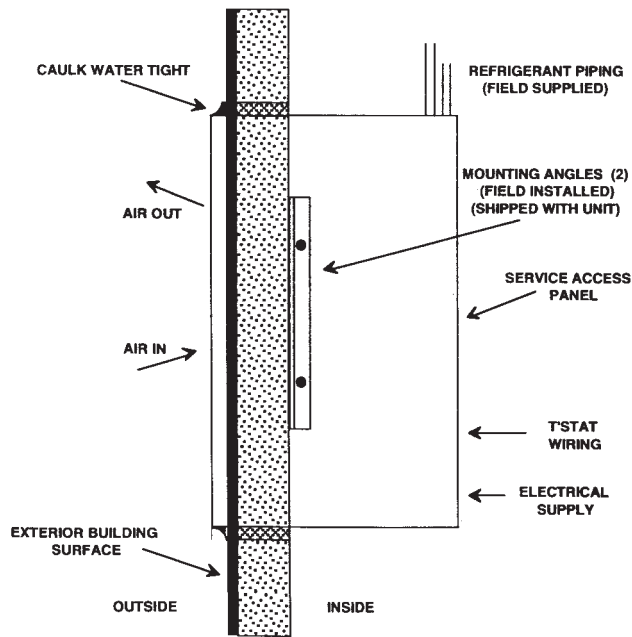
Since the **WCU** condensing unit is located closer to the indoor air handler, service and routine maintenance is much easier.

Ideal for Replacements -

Three models are now available with different cabinet dimensions to replace most brands no longer in production with little or no modifications required.

Complete Compatibility -

These condensing units are completely compatible with most major brands of indoor air handlers and coils.



Typical Installation

CROSS REFERENCE

FIRST CO. MODEL	OTHER BRAND
WCU-AB H X W X D 32 X 24 X 19	FEDDERS RHEEM LENNOX MAGIC CHEF MEYER CARRIER NATIONAL COMFORT (3000)
WCU-BB H X W X D 28 X 25-3/4 X 19	BRYANT, DAY & NIGHT, PAYNE CARRIER DUNHAM-BUSH LENNOX MAGIC CHEF MEYER NATIONAL COMFORT (1000)
WCU-CB H X W X D 23 X 29-1/2 X 19	DUNHAM-BUSH HYDRO THERM SPACE PACK INTERNATIONAL JOHNSON, AIR EASE LENNOX LUXAIRE (YORK) WESTINGHOUSE NATIONAL COMFORT (4000)

WCU-AB Series

Features:

- | | |
|---|--|
| <ul style="list-style-type: none"> 1) High efficiency compressor with built-in pressure and temperature protection 2) All tonnages have same dimensions 32 x 24 x 19 3) Brass service valves with sweat connections and pressure gauge ports 4) High efficiency copper tube / aluminum fin coil 5) Attractive plastic coated coil guard 6) Factory charged with R22 for 15 feet of refrigerant lines | <ul style="list-style-type: none"> 7) Galvanized steel construction with baked-on coating 8) Factory installed filter / drier 9) Knockouts in cabinet on top and back for refrigerant lines 10) Access hole for gauge hoses (allows accurate pressure readings with service panel in place) 11) Easily removable motor / blower assembly with built-in thermal overload protection 12) Sloped base pan to drain rain water from unit |
|---|--|

ELECTRICAL DATA 208/230V - 1PH - 60 Hz						
UNIT MODEL	COMPRESSOR		CONDENSER FAN		MIN. CIR. AMPACITY	MAX. HACR BREAKER
	LRA	RLA	FLA	HP		
18WCU-10AB	48	9.0	1.5	1/4	13	20
24WCU-10AB	61	12.2	1.5	1/4	17	25
30WCU-10AB	68	13.5	1.5	1/4	18	30

PHYSICAL DIMENSIONS					
UNIT MODEL	A	B	C	LIQ./SUCTION LINE CONN. (SWEAT)	APPROX. SHIP WT.
18WCU-10AB	32	24	19	3/8 O.D. / 3/4 O.D.	200
24WCU-10AB					
30WCU-10AB					

PERFORMANCE DATA			
UNIT MODEL	EVAPORATOR MODEL	TOTAL BTUH CAPACITY (1)	SEER (1)
18WCU-10AB	79254	18,400	10.0
24WCU-10AB	79304	23,800	
30WCU-10AB	79354	29,800	

OPT. INSUL. JACKET (Field Installed)			
PART NUMBER	DIMENSIONS		
	H	W	D
928-2	34-1/2	26-1/2	11-5/8

OPT. ARCH. GRILLE (Field Installed)				
PART NUMBER	FOR USE ON	DIMENSIONS		
		H	W	D
G200-A	18WCU-10AB	32	24	1-1/4
	24WCU-10AB			
	30WCU-10AB			

Notes:

- Jacket is lined with 1" insulation and is recommended on installations where the condensing unit recesses into a conditioned space.
- Jacket has a removable rear access panel for service access to the condensing unit.
- Contact factory for detailed jacket installation instruction sheet No. L2581 prior to condensing unit installation.

30WCU-10AB with architectural louvered grill requires special unit.
(unit model 30WCU-10AB -753010AB3)

Notes:

- Standard grille is "clear anodized".
- Grille screws to the "face" of the condensing unit in place of the factory wire guard.
- Grilles can be factory painted almost any color. Contact the factory for additional information and cost.

(1) Tested in accordance with ARI Standard 210.

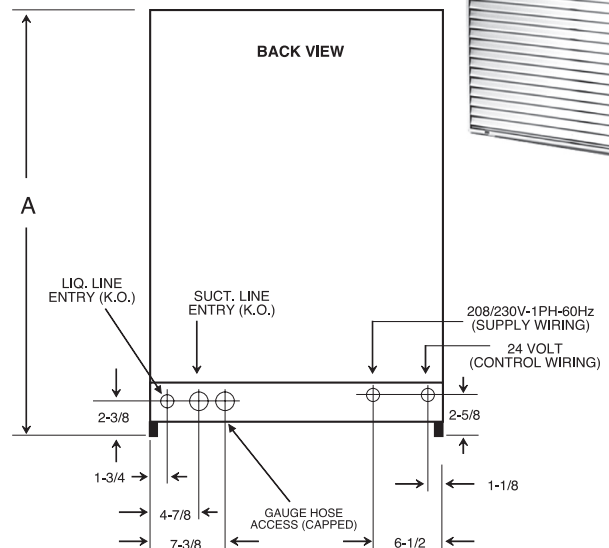
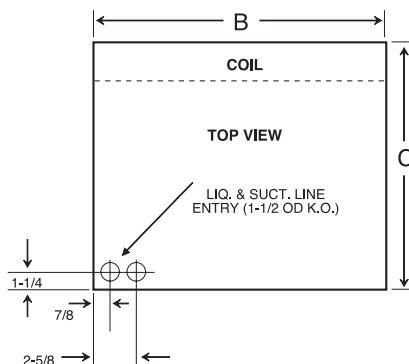
OPT. LOW AMBIENT KIT (Field Installed)		
PART NUMBER	FOR USE ON	DESCRIPTION
942-2	All Models	Includes strap-on crankcase heater and condenser fan cycle control

OPTIONAL INSTALLATION SLEEVE (1)					
PART NUMBER	FOR USE ON	DESCRIPTION	DIMENSIONS		
			H	W	D
928-3	All "AB" models only	Sleeve installs in rough-in to facilitate condensing unit installation and removal for service	33-3/8	24-1/4	11-3/4

(1) Can not be used in conjunction with insulation jacket.



In keeping with its policy of continuous progress and product improvement, First Operations reserves the right to make changes without notice. Maintenance for all First Co. products is available under "Product Maintenance" at www.firstco.com.



WCU-BB Series

Features:

- 1) **High efficiency compressor** with built-in pressure and temperature protection
- 2) All tonnages have **same dimensions** **28 x 25-3/4 x 19**
- 3) **Brass service valves** with sweat connections and pressure gauge ports
- 4) High efficiency **copper tube / aluminum fin coil**
- 5) Attractive **plastic coated coil guard**
- 6) **Factory charged with R22** for 15 feet of refrigerant lines
- 7) **Galvanized steel** construction with baked-on coating
- 8) Factory installed **filter / drier**
- 9) **Knockouts in cabinet** on top and back for refrigerant lines
- 10) **Access hole for gauge hoses** (allows accurate pressure readings with service panel in place)
- 11) **Easily removable motor / blower** assembly with built-in thermal overload protection
- 12) **Sloped base pan** to drain rain water from unit

ELECTRICAL DATA 208/230V - 1PH - 60 Hz						
UNIT MODEL	COMPRESSOR		CONDENSER FAN		MIN. CIR. AMPACITY	MAX. HACR BREAKER
	LRA	RLA	FLA	HP		
18WCU-10BB	48	9.0	1.5	1/4	13	20
24WCU-10BB	61	12.2	1.5	1/4	17	25
30WCU-10BB	68	13.5	1.5	1/4	18	30

OPT. ARCH. GRILLE (Field Installed)				
PART NUMBER	FOR USE ON	DIMENSIONS		
		H	W	D
G200BBA	18WCU-10BB 24WCU-10BB 30WCU-10BB	28	25-3/4	1-1/4

PERFORMANCE DATA			
UNIT MODEL	EVAPORATOR MODEL	TOTAL BTUH CAPACITY (1)	SEER (1)
18WCU-10BB	79254	17,500	10.0
24WCU-10BB	79304	23,000	
30WCU-10BB	79354	28,000	

Notes:

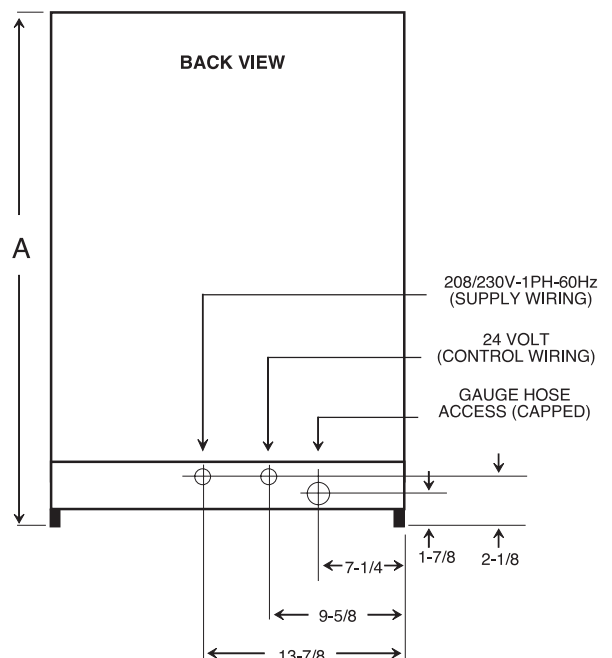
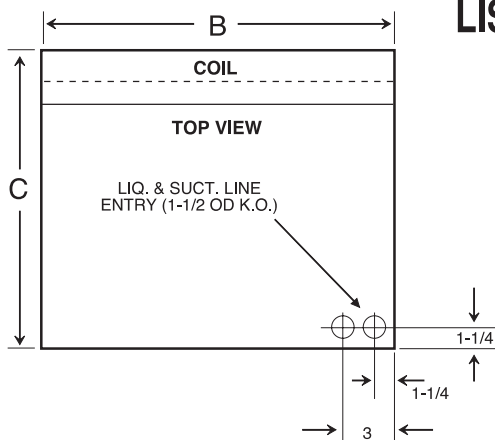
1. Standard grille is "clear anodized".
2. Grille screws to the "face" of the condensing unit in place of the factory wire guard.
3. Grilles can be factory painted almost any color. Contact the factory for additional information and cost.

(1) Tested in accordance with ARI Standard 210.

In keeping with its policy of continuous progress and product improvement, First Operations reserves the right to make changes without notice. Maintenance for all First Co. products is available under "Product Maintenance" at www.firstco.com.



PHYSICAL DIMENSIONS					
UNIT MODEL	A	B	C	LIQ./SUCT. LINE CONN. (SWEAT)	APPROX. SHIP WT.
18WCU-10BB	28	25-3/4	19	3/8 O.D. / 3/4 O.D.	200
24WCU-10BB					
30WCU-10BB					



WCU-CB Series

These models are recommended for replacement only. . . use WCU-AB or WCU-BB for new construction

Features:

- 1) High efficiency compressor with built-in pressure and temperature protection
- 2) All tonnages have same dimensions **23 x 29-1/2 x 19**
- 3) Brass service valves with sweat connections and pressure gauge ports
- 4) High efficiency copper tube / aluminum fin coil
- 5) Attractive plastic coated coil guard
- 6) Factory charged with R22 for 15 feet of refrigerant lines
- 7) Galvanized steel construction with baked-on coating
- 8) Factory installed filter / drier
- 9) Knockouts in cabinet on top and back for refrigerant lines
- 10) Access hole for gauge hoses (allows accurate pressure readings with service panel in place)
- 11) Easily removable motor / blower assembly with built-in thermal overload protection
- 12) Sloped base pan to drain rain water from unit

ELECTRICAL DATA 208/230V - 1PH - 60 Hz						
UNIT MODEL	COMPRESSOR		CONDENSER FAN		MIN. CIR. AMPACITY	MAX. HACR BREAKER
	LRA	RLA	FLA	HP		
18WCU-10CB	48	9.0	1.5	1/4	13	20
24WCU-10CB	61	12.2	1.5	1/4	17	25
30WCU-10CB	68	13.5	1.5	1/4	18	30

PHYSICAL DIMENSIONS					
UNIT MODEL	A	B	C	LIQ./SUCT. LINE CONN. (SWEAT)	APPROX. SHIP WT.
18WCU-10CB	23	29-1/2	19	3/8 O.D. / 3/4 O.D.	200
24WCU-10CB					
30WCU-10CB					

PERFORMANCE DATA			
UNIT MODEL	EVAPORATOR MODEL	TOTAL BTUH CAPACITY (1)	SEER (1)
18WCU-10CB	79254	17,000	10.0
24WCU-10CB	79304	22,700	
30WCU-10CB	79354	27,200	

In keeping with its policy of continuous progress and product improvement, First Operations reserves the right to make changes without notice. Maintenance for all First Co. products is available under "Product Maintenance" at www.firstco.com.



(1) Tested in accordance with ARI Standard 210.

