

XMBX Series

Vertical / Horizontal Furnace

Electric Heat, With Space For Cooling Coil

0 - 25KW, up to 2,000 CFM



Description :

The **XMBX** series air handler is completely factory assembled with electric heat (except 0kW models), 240V motor, 24V transformer, electrical disconnect (above 10kW models), and throw away filter. All components are installed within a fully insulated, galvanized steel cabinet with an attractive epoxy finish.

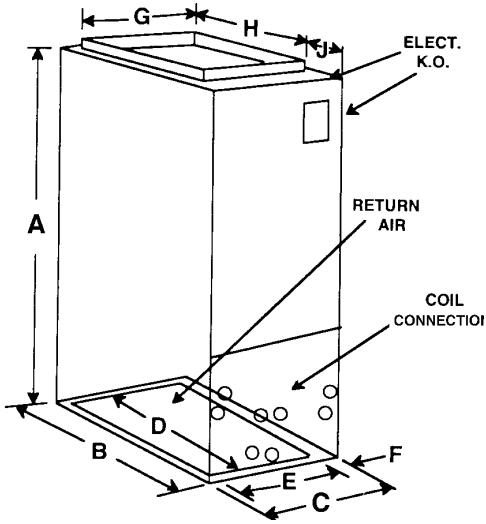
The **XMBX** air handler has space available for a field installed cooling coil of sufficient size. See reverse side for cabinet dimensions.



FEATURES:

1. Completely **prewired** with 0-25kW electric heat (except 0kW models)
2. Cabinet accepts any properly sized **field installed cooling coil**
3. Throw away **filter**
4. Fully **insulated and painted** galvanized steel cabinet
5. 24V **transformer**
6. Factory installed **circuit breaker(s)** (above 10kW models only)

XMBX Series



In keeping with its policy of continuous progress and product improvement, First Operations reserves the right to make changes without notice. Maintenance for all First Co. products is available under "Product Maintenance" at www.firstco.com.

PHYSICAL DIMENSIONS												
UNIT MODEL	A	B	C	D	E	F	G	H	J	LIQ. (SWEAT)	SUCT. (SWEAT)	FILTER
18/24XMBX	40	20	20	18-1/2	16	2	18	16	3	3/8	5/8	18 X 20 X 1
30/36XMBX	42	23	20	21-1/2	16	2	18	17	5	3/8	3/4	20 X 22 X 1
48/60XMBX	48	28	21-1/4	26-1/4	17	2	19-7/8	18-1/2	8-7/8	1/2	7/8	20 X 25 X 1

BLOWER DATA										
UNIT MODEL	FAN SPEED	DUTY	MOTOR HP (240V)	CFM vs. EXTERNAL STATIC PRESSURE						
				0.10	0.15	0.20	0.25	0.30	0.40	0.50
18XMBX	LOW	COOL	1/6	780	750	720	700	660	600	510
	LOW	HEAT		780	750	720	700	660	600	510
24XMBX	HIGH	COOL	1/6	900	880	860	830	790	700	600
	LOW	HEAT		740	710	690	660	630	570	490
30XMBX	LOW	COOL	1/3	1210	1190	1160	1140	1110	1050	990
	LOW	HEAT		1210	1190	1160	1140	1110	1050	990
36XMBX	HIGH	COOL	1/3	1410	1380	1340	1310	1270	1190	1060
	LOW	HEAT		1170	1150	1130	1100	1080	1030	970
48XMBX	HIGH	COOL	1/2	1760	1730	1680	1640	1580	1480	1360
	MED.	COOL		1490	1460	1430	1400	1370	1300	1210
	LOW	HEAT		1280	1260	1230	1210	1190	1130	1080
60XMBX	HIGH	COOL	3/4	2130	2110	2090	2060	2025	1930	1820
	LOW	HEAT		1690	1680	1660	1640	1620	1580	1540

NOTE: Use 48XMBX for 3.5 ton applications and field convert to medium speed for cooling.

PERFORMANCE DATA													
UNIT MODEL	NOM. CFM	(1) NOM. COOL BTUH	ELECTRIC HEAT CAPACITY				TOTAL AMPS		MIN. CIR. AMPACITY		MAX. FUSE OR HACR BREAKER		
			kW		BTUH		240V	208V	240V	208V	240V	208V	
			240V	208V	240V	208V							
18XMBX & 24XMBX	600	18,000	0	0	0	0	1.6	---	---	---	---	---	
			-3	3	2.3	10,200	7,700	14	13	18	16	20	20
			-4	4	3	13,600	10,200	19	16	23	20	25	20
			-5	5	3.8	17,000	13,000	23	20	28	25	30	25
			-6	6	4.5	20,500	15,400	27	24	36	29	40	30
			-8	8	6	27,300	20,500	35	31	46	38	50	40
30XMBX & 36XMBX	1,000	30,000	0	0	0	0	2.5	---	---	---	---	---	
			-5	5	3.8	17,000	13,000	24	21	30	26	30	30
			-8	8	6	27,300	20,500	36	32	46	40	50	40
			-10	10	7.5	34,100	25,600	45	39	56	49	60	50
			(3) -15	15	11.3	51,100	38,500	45	39	56	49	60	50
								21	18	26	23	30	25
48XMBX	1,600	48,000	0	0	0	0	3.5	---	---	---	---	---	
			-5	5	3.8	17,000	13,000	25	22	30	27	30	30
			-8	8	6	27,300	20,500	37	33	47	40	50	40
			-10	10	7.5	34,100	25,600	46	40	57	50	60	50
			(3) -15	15	11.3	51,100	38,500	46	40	57	50	60	50
								21	18	27	23	30	25
			(3) -20	20	15	68,200	51,100	46	40	57	50	60	50
								42	36	53	46	60	50
			(3) -25	25	18.75	85,250	63,900	46	40	57	50	60	50
								42	36	53	46	60	50
60XMBX	2,000	60,000	0	0	0	0	6.0	---	---	---	---	---	
			-5	5	3.8	17,000	13,000	27	24	34	30	35	30
			-8	8	6	27,300	20,500	40	35	49	44	50	45
			-10	10	7.5	34,100	25,600	48	42	60	53	60	60
			(3) -15	15	11.3	51,100	38,500	48	42	60	53	60	60
								21	18	27	23	30	25
			(3) -20	20	15	68,200	51,100	48	42	60	53	60	60
								42	36	53	46	60	50
			(3) -25	25	18.75	85,250	63,900	48	42	60	53	60	60
								42	36	53	46	60	50

- (1) Blower data assumes installed cooling coil.
- (2) Nominal tons cooling indicates maximum cooling coil size that can be added.
- (3) 15kW and 20kW models require 2 supply circuits. 25kW models require 3 supply circuits.

NOTES:

1. Units suitable for installation with 0" clearance to combustible material.

HORIZONTAL DRAIN PANS (Field Installed)	
PART NO.	FITS
997-1	18/24XMBX
997-2	30/36XMBX
997-3	48/60XMBX

NOTES:

1. Kits are for left-to-right or right-to-left airflow.

