

USV Series USH Series



High Efficiency Cased Evaporator Coils 1-1/2 thru 5 Tons

Description:

The **USV** series evaporator coil features the patented universal "multi-match" coil box that fits every upflow gas furnace. Break-away sections on the bottom of each coil box can be snapped off in the field for proper fit. The **USH** series evaporator coil is designed for mounting in horizontal ductwork, usually in an attic or crawl space. Both coils feature attractive embossed galvanized cabinet, copper tube coils, complete insulation, primary and secondary drains, and piston-type metering devices for refrigerant control. U.S. Patent for coil box is No. 4,633,766.

USV SERIES (**UPFLOW COIL**) USH SERIES (**HORIZONTAL COIL**)

FEATURES:

- 1) For use with **10, 11 and 12 SEER** condensing units
- 2) Patented "**multi-match**" coil box with breakaway plates (**USV** only) fits every upflow gas furnace
- 3) High efficiency **copper tube/aluminum fin coil**
- 4) Coils shipped with up to three pistons for proper matching with outdoor unit
- 5) Coils are circuited for **straight cool or heat pump operation**
- 6) Coils have sweat fitting refrigerant connections
- 7) 3/4" MPT **primary and secondary condensate drains**
- 8) Factory installed equalizer connection on coil header to facilitate field installation of **optional expansion valve kit**
- 9) **Coated drain pans** for corrosion resistance



USV



USH

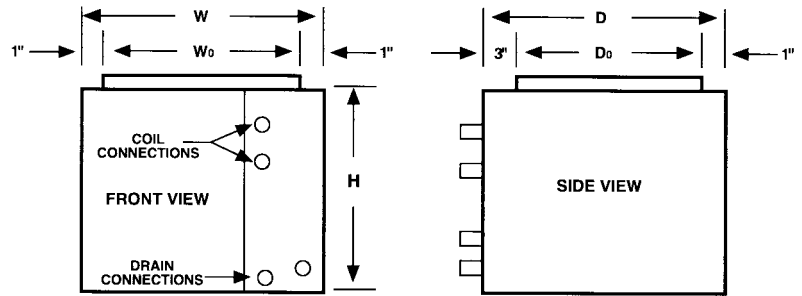
USV Series

Upflow Evaporator Coils 1-1/2 through 5 ton

EXPANSION VALVE KIT (field installed)	
KIT NUMBER	FITS
978-9	1-1/2 - 2 TON
978-10	2-1/2 - 3 TON
978-11	3-1/2 - 4 TON
978-12	5 TON

Notes:

- (1) Valves mount externally on both the USV and USH boxes
- (2) Valves are external equalizing, internal bleed type (**non heat pump**)



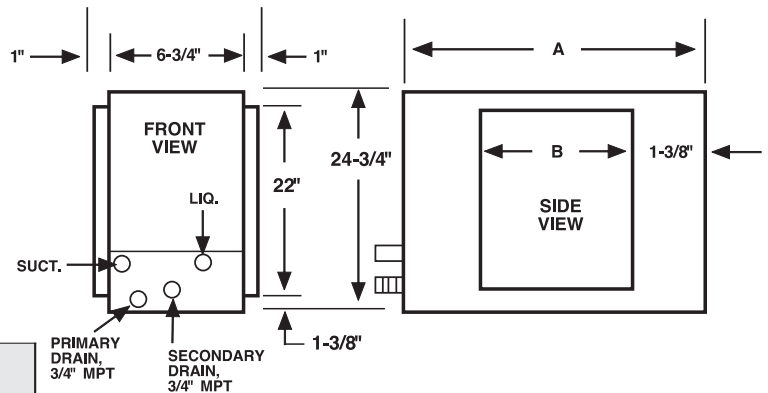
DIMENSIONS - PERFORMANCE									RETURN AIR OPENING SIZES
UNIT MODEL	NOMINAL TONNAGE RANGE (1)	W	D	H	OUTLET		(3) SUCTION O.D.	(3) LIQUID O.D.	BREAK-AWAY WIDTHS (2) (BOTTOM OF COIL BOX)
					W_0	D_0			
USV324AP	1.5 - 2.0	16-1/2	21	13	14-1/2	17	5/8	3/8	9-1/4, 10-3/4, 12-7/8, 14-3.8, 15
USV330AP	2.0 - 2.5	21	21	17	19	17	5/8	3/8	10-3/4, 12-7/8, 15, 16-1/4, 17-1/2, 18, 19-5/8, 21
USV336AP	2.5 - 3.0	21	21	17	19	17	3/4	3/8	
USV342AP	3.0 - 3.5	24-1/2	21	21	22-1/2	17	3/4	3/8	12-7/8, 15, 16-1/4, 17-1/2, 18, 19-5/8, 21, 21-5/8, 23-1/2, 24-1/2
USV348AP	3.5 - 4.0	24-1/2	21	21	22-1/2	17	7/8	1/2	
USV460AP	4.0 - 5.0	28	21	22-1/2	26	17	7/8	1/2	15, 16-1/2, 21, 21-5/8, 23-1/2, 21-1/2, 25-1/2

Notes:

- (1) Nominal capacities are based on 80°F DB/67°F WB at approximately 45°F suction with 400 cfm/ton.
- (2) Bottom has multiple break-aways to allow matching with different furnaces.
- (3) All refrigerant line connections are sweat.

USH Series

Horizontal Evaporator Coils 1-1/2 through 5 ton



DIMENSIONS - PERFORMANCE					
UNIT MODEL	NOMINAL TONNAGE RANGE (1)	A	B	(3) SUCTION O.D.	(3) LIQUID O.D.
USH324AP	1.5 - 2.0	22-1/2	18	5/8	3/8
USH330AP	2.0 - 2.5	22-1/2	18	5/8	3/8
USH336AP	2.5 - 3.0	22-1/2	18	7/8	3/8
USH342AP	3.0 - 3.5	30-1/2	26	7/8	3/8
USH348AP	3.5 - 4.0	30-1/2	26	7/8	3/8
USH460AP	4.0 - 5.0	37-1/2	33	7/8	1/2

"In keeping with its policy of continuous progress and product improvement, First Ltd. reserves the right to make changes without notice."



See Notes 1, and 3 above