

NOW WITH
SLOPED DRAIN PAN



HX(-E) Series

Horizontal Recessed
Ceiling Fan Coil

1 - 3 Tons Cooling
0 - 10 kW Electric Heat



HX Fan Coil



Optional Access Panel
(non-louvered shown)
(#965(-1), 966(-1), or 967(-1))
(see P.3 for information)



Optional Insulated Enclosure
(see P.3 for information)



Optional Access Panel for Enclosure
(non-louvered shown)
(#9PE001,2, or 3-L or S)
(see P.3 for information)

The space-saving **HX** Series fan coil is only 10" high (11" with enclosure), allowing it to recess in a ceiling. Recessed ceiling fan coils save valuable floor space and eliminate costly "equipment" closets.

The **HX** series is compatible with most split-system condensing units and heat pumps (heat pumps with electric heat require field added kit - see p.2). Contact the factory for correct matches with outdoor units.

All **HX** fan coils include a 240/24V transformer and are completely prewired with 0 to 10 kW of electric heat. A sloped drain pan allows positive drainage of condensate.

For **HX** fan coils factory installed within an enclosure, add "-E" after **HX** in the model number. For instance, ordering model **18HX-E5** will include an **18HX5** factory installed in a # **9E01** enclosure and your choice of either a # **9PE001L** or **S** panel. All "E" models are special build.

Standard Features:

- Drain pan has 3/4" NPT primary and secondary (overflow) fittings
- 240V motor, 24V controls
- Highly efficient copper tube/aluminum fin cooling coil with piston-type metering device. Contact factory for correct match with outdoor unit.
- Insulated and coated galvanized steel drain pan is sloped for proper drainage

Optional Accessories:

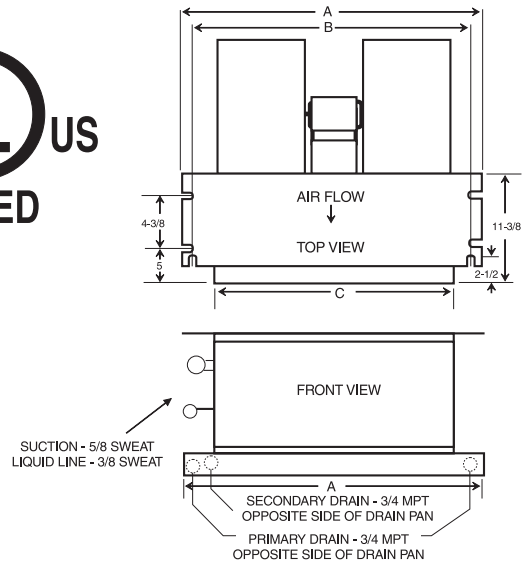
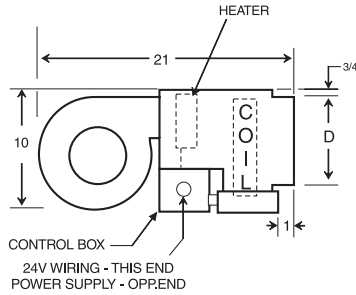
- Attractive off-white return air / access panel with captive screws (panels can be field painted)
- Fully insulated enclosure with matching ceiling panel (enclosure can be pre-installed). Also allows for ducted return air.
- Heat pump kit - for all HX models with electric heat
- Factory installed expansion valves (special order - contact factory)
- Condensate overflow switch (Part # **E306**) (Field installed)

HX(-E) Series

1 through 3 tons



Approved for installation with 0" clearance to combustible materials



PERFORMANCE DATA										
UNIT MODEL	NOM. CFM	NOM. COOL BTUH	HEAT		TOTAL AMPS	MIN. CIR. AMPACITY		(2) MAX. FUSE		
			kW	BTUH		208V	230V	208V	230V	
12HX	400	12,000	---	---	0.75	---	---	---	---	
			-3	3	10,200	13.3	15	17	15	20
			-5	5	17,000	21.6	24	27	25	30
			-6	6	20,500	25.8	28	33	30	35
			-10	10	34,100	43.6	48	55	50	60
18HX	600	18,000	---	---	2.0	---	---	---	---	
			-3	3	10,200	14.5	16	20	20	20
			-5	5	17,000	22.8	25	30	25	30
			-6	6	20,500	27.0	30	35	30	35
			-8	8	27,300	35.3	39	47	40	50
			-10	10	34,100	43.6	48	55	50	60
19HX	600	19,000	---	---	1.0	---	---	---	---	
			-3	3	10,200	13.5	15	18	15	20
			-5	5	17,000	21.8	24	30	25	30
			-6	6	20,500	26.0	29	35	30	35
			-8	8	27,300	34.3	38	47	40	50
			-10	10	34,100	42.6	47	55	50	60
24HX & 25HX	800	24,000	---	---	2.0	---	---	---	---	
			-3	3	10,200	14.5	16	20	20	20
			-5	5	17,000	22.8	25	30	25	30
			-6	6	20,500	27.0	29	35	30	35
			-8	8	27,300	35.3	39	47	40	50
			-10	10	34,100	43.6	48	55	50	60
30HX & 31HX	1000	30,000	---	---	2.0	---	---	---	---	
			-3	3	10,200	14.5	16	20	20	20
			-5	5	17,000	22.8	25	30	25	30
			-6	6	20,500	27.0	29	35	30	35
			-8	8	27,300	35.3	39	47	40	50
			-10	10	34,100	43.6	48	55	50	60
36HX	1200	36,000	---	---	2.8	---	---	---	---	
			-3	3	10,200	15.3	18	20	20	20
			-5	5	17,000	23.6	27	30	30	30
			-6	6	20,500	27.8	31	35	35	35
			-8	8	27,300	36.1	40	46	40	50
			-10	10	34,100	44.5	49	56	50	60
HIGH STATIC MODELS (special order)										
24HXB	800	24,000	-5	5	17,000	22.8	25	30	25	30
			-6	6	20,500	27.0	29	35	30	35
			-8	8	27,300	35.3	39	47	40	50
			-10	10	34,100	43.6	48	55	50	60
			-10	10	34,100	43.6	48	55	50	60
30HXB	1000	30,000	-5	5	17,000	23.2	26	30	30	30
			-6	6	20,500	27.5	30	35	30	35
			-8	8	27,300	35.8	39	47	40	50
			-10	10	34,100	44.1	48	56	50	60
			-10	10	34,100	44.1	48	56	50	60

PHYSICAL DIMENSIONS				
MODEL	A	B	C	D
12HX 18HX 19HX 24HX 24HXB	37-1/4	34-11/16	30	6-1/2
25HX 30HX 30HXB	43-1/4	40-11/16	36	6-1/2
31,36HX	49-1/4	46-11/16	42	6-1/2

BLOWER DATA								
UNIT MODEL	MOTOR HP (240V)	CFM vs. EXTERNAL STATIC PRESSURE						
		0.00	0.05	0.10	0.15	0.20	0.25	0.30
12HX	1/50	480	450	410	365	320	---	---
18HX	1/8	770	740	710	675	635	590	540
19HX	1/8	775	750	715	685	650	615	580
24HX	1/4	910	875	845	810	770	725	680
25HX	1/4	960	935	910	885	860	860	800
24HXB	1/4	---	---	---	920	890	860	830
30, 31HX	1/4	1140	1105	1070	1030	990	950	900
30HXB	1/3	---	---	---	1110	1070	1030	985
36HX	1/3	1475	1440	1400	1360	1320	1275	1230

- (1) B models **NOT** recommended for free air delivery.
- (2) Add .05 static when enclosure is used.

HEAT PUMP KIT (FIELD INSTALLED)	
PART NO.	DESCRIPTION
942-1	KIT FOR HX MODELS WITH ELECTRIC HEAT

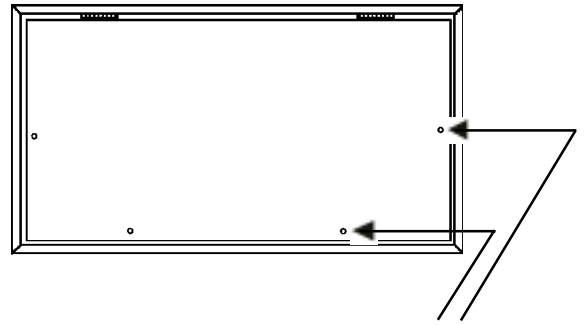
Note: Heat pump kit must be field installed for all HX models with electric heat. 0 kW models do not require kit. **Contact the factory for compatibility match with condensing unit.**

In keeping with its policy of continuous progress and product improvement, First Operations reserves the right to make changes without notice. Maintenance for all First Co. products is available under "Product Maintenance" at www.firstco.com.

- (1) All BTUH heating ratings at 240V - derate heating capacities by 25% for 208V
- (2) Maximum fuse or HACR-type circuit breaker: The following models are not listed but may be available on a special order basis: 12kW on 24HX, 24HXB, 30HX, 30HXB and 26HX

Ceiling Access Panels - (without enclosure)

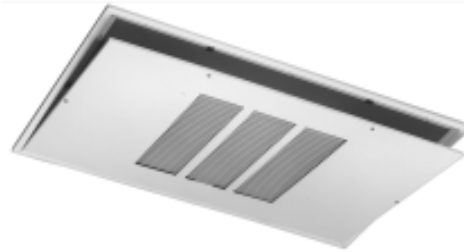
CEILING ACCESS PANELS						
FOR MODEL	PANEL NO.	DESCRIPTION	CEILING PANEL OPENING		PANEL FRAME DIMS. (OUTSIDE)	
12 - 24HX	965	LOUVERED	24-1/2	40	27-1/2	43
	965-1	NON-LOUVERED	24-1/2	40	27-1/2	43
25, 30HX	966	LOUVERED	24-1/2	46	27-1/2	49
	966-1	NON-LOUVERED	24-1/2	46	27-1/2	49
31, 36HX	967	LOUVERED	24-1/2	52-1/2	27-1/2	55-1/2
	967-1	NON-LOUVERED	24-1/2	52-1/2	27-1/2	55-1/2



captive screws now on all panels
(screw stays in panel when opened)



965-1, 966-1, 967-1,
9PE001S, 2S, 3S



965, 966, 967,
9PE001L, 2L, 3L
(Louvers may differ from picture)
Louvered panels accept 20x20x1" filter
(field supplied)

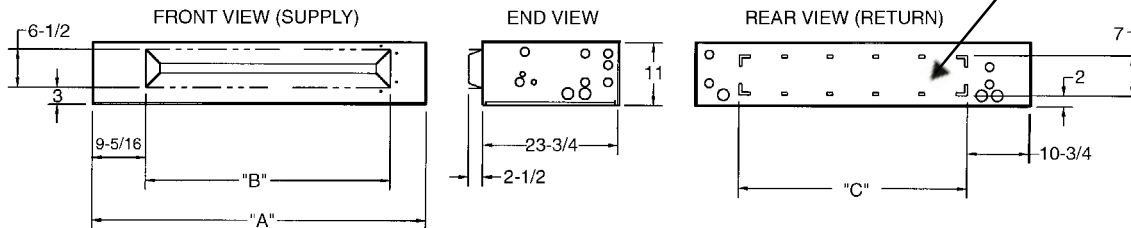
Enclosures with Ceiling Panels

(Included as standard with ALL "-E" models or can be ordered separately for "HX" models)

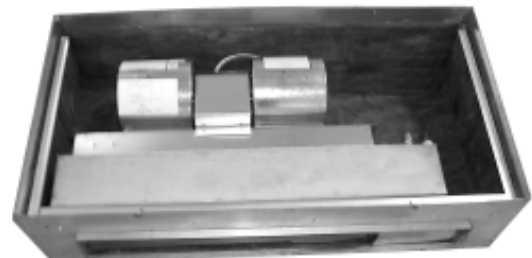
CEILING PANEL / ENCLOSURE INFORMATION							
FOR MODEL	ENCLOSURE NO.	PANEL NO.	DESCRIPTION	CEILING PANEL OPENING		PANEL FRAME DIMS. (outside)	
				W	L	W	L
12 - 24HX	9E01	9PE001L	LOUVERED	24	49-3/8	27	52-3/8
		9PE001S	NON-LOUVERED	24	49-3/8	27	52-3/8
25, 30HX	9E02	P9E002L	LOUVERED	24	55-3/4	27	58-3/4
		9PE002S	NON-LOUVERED	24	55-3/4	27	58-3/4
31, 36HX	9E03	P9E003L	LOUVERED	24	61-3/4	27	64-3/4
		9PE003S	NON-LOUVERED	24	61-3/4	27	64-3/4

(See Panel Pictures Above)

KNOCKOUT FOR DUCTED RETURN
(Requires remote filter grille - field supplied)
(Ducted return requires non-louvered panel)

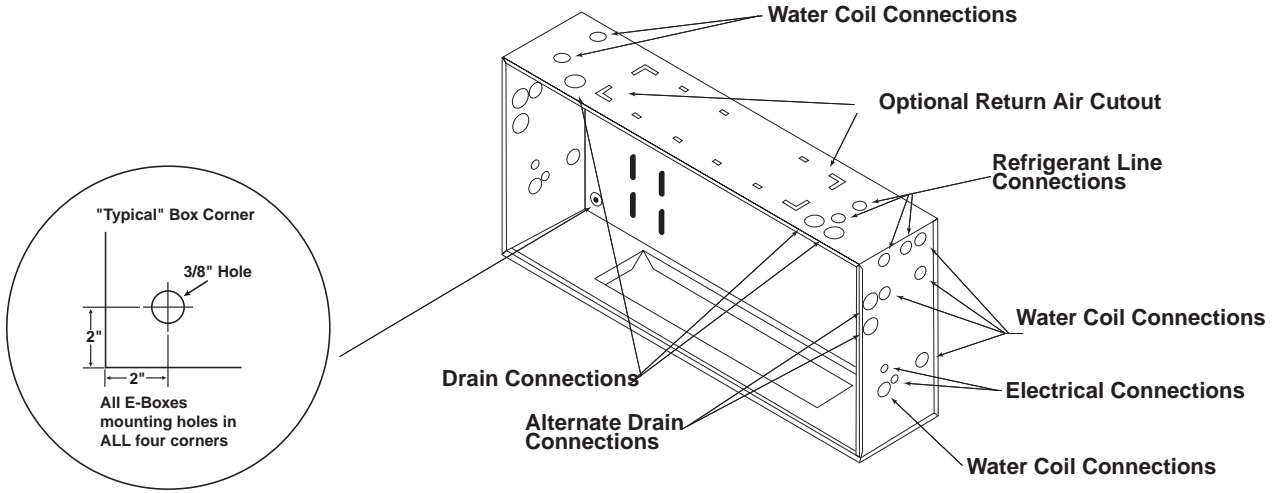


ENCLOSURE DIMENSIONS				
FOR MODEL	ENCLOSURE NO.	A	B	C
12 - 24HX	9E01	49-1/2	30-7/8	28
25, 30HX	9E02	55-1/2	36-7/8	34
31, 36HX	9E03	61-1/2	42-7/8	40

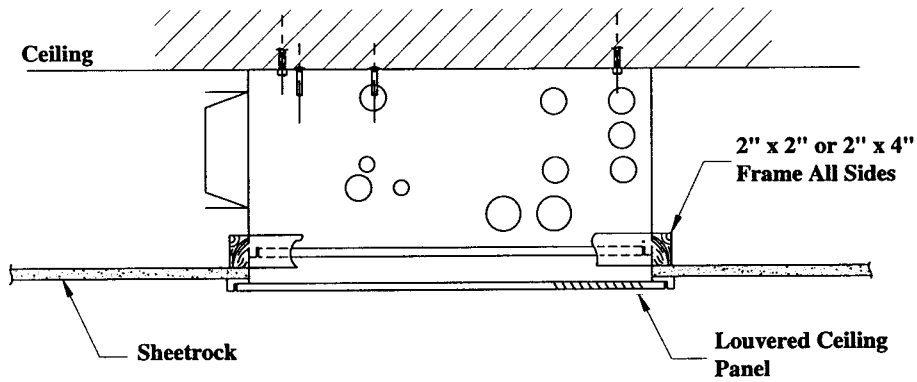


Picture shown is enclosure with either a field (HX) or factory (HX-E) installed fan coil

ENCLOSURE CONNECTION LOCATIONS



ENCLOSURE INSTALLATION SUPPORT FRAMING



NOTE:

Unit must be located such that the 2" x 2" or 2" x 4" frame creates an air tight seal around unit.

CEILING PANEL FRAME INSTALLATION

