

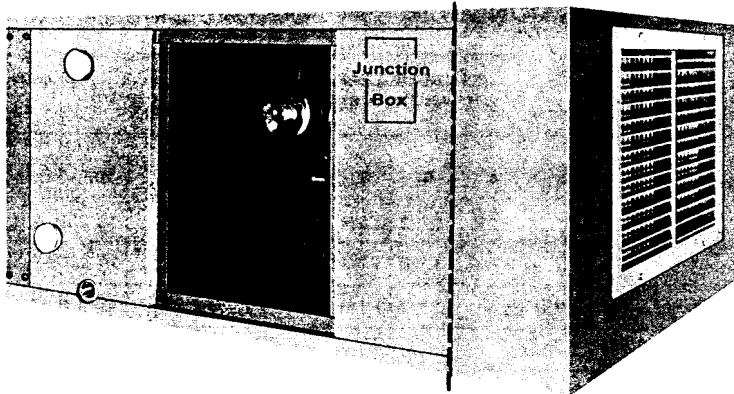
# Series BHW Horizontal Water Blower-Coil Unit



**FIRST CO.**

## FEATURES

1. Nominal 2, 3, 4, 5, 7½, 10 & 15 ton air conditioning capacity at standard ASHRAE conditions. Special size and capacity coil available on order.
2. Compact unit, low speed blower, quiet operation.
3. Standard units have 4-row chilled or hot coils with space for separate hot water coil.
4. Permanent 1" filters on all models except 1" throw-away filters on 180 BHW. Space available for 2" filters.
5. 24 BHW through 60 BHW models have NC thread spotweld 3/8" nut in each corner for easy suspension of unit. 90 BHW through 180 BHW models have 7/8" knockouts in each corner top and bottom for suspension rods to pass through.
6. Cabinet fabricated from heavy gauge steel, specially bonderized inside and out and finished with baked on enamel before assembly.
7. Looking with air flow headers located on right side of cabinet, with drain located on both sides.
8. Knockouts available on side opposite connection side for left hand connections looking with airflow.
9. Separate hot water coils stub out the cabinet.
10. Six row coils available from stock. To order, use model designation BHW-6.
11. Motor wiring connected from motor to junction box mounted on right side of cabinet looking with airflow.
12. Units **UL LISTED** for cooling only. Requesting UL Listing for heating.
13. Entire cabinet insulated inside with ¾" insulation, 1½ lb. density.



### BHW-4 Unit With Optional Plenum and Grille

**FIRST CO.** BHW-4 chilled or hot water coil units are designed for installation within the conditioned area or as remote units with duct systems. All models available with or without the discharge plenum and grille.

**FIRST CO.** horizontal units may be used for air conditioning, heating, or ventilation. **Separate hot water coils are available for installation in the same cabinet in the reheat position.**

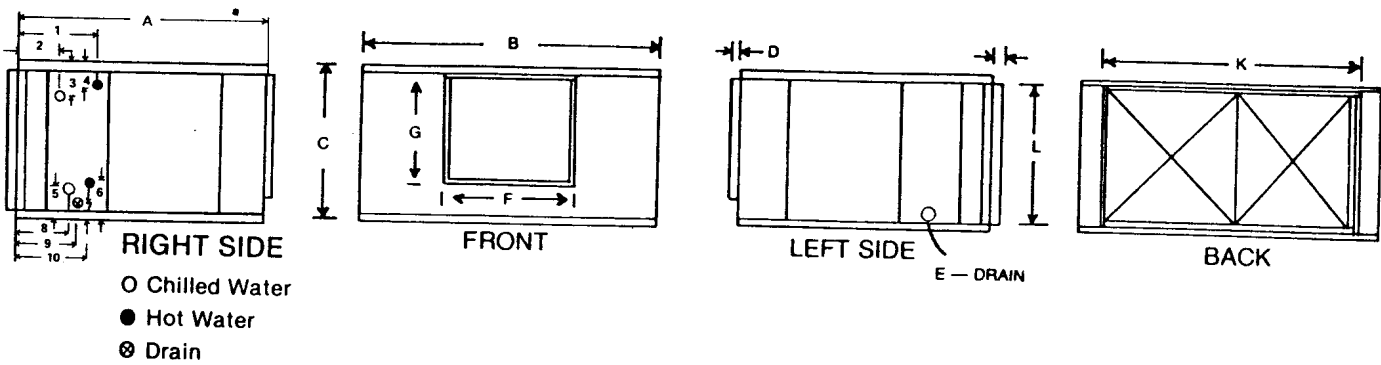
**FIRST CO.** units are compact with large removable panels on both sides for installation and inspection. Separate removable panels are provided on both sides of unit for filter service.

## SPECIFICATIONS

MODEL	FACE AREA SQ. FT.	ROWS TUBE	NOMINAL RATING IN TONS	BFB MOTOR H.P.	VOLT	PHASE	BLOWER	FILTER	MANIFOLD CONNECTION	FRONT GRILLE PLENUM WT.	SHPPG WT.	Optional Free Throw Plenum & Grille	
												Depth	Grille Size
24 BHW-4	2.05	4-3/8	2	1/4	115	1	9-9	16x25	3/4" SWT	20	143	6	12x16
36 BHW-4	3.05	4-3/8	3	1/3	115	1	9-9	16x32	3/4" SWT	24	172	6	12x20
48 BHW-4	4.03	4-3/8	4	1/2	115	1	10-10	2-16x20	7/8" SWT	27	204	6	14x22
60 BHW-4	5.0	4-3/8	5	1/2	115	1	12-12	2-20x20	1 1/8" SWT	31	235	6	16x24
90 BHW-4	7.5	4-1/2	7 1/2	3/4*	230	1	15-15	2-16x25 1-20x25	1 1/8" SWT	43	375	6	18x24
120 BHW-4	9.6	4-1/2	10	1*	115/230	1	15-15	3-16x32	1 3/8" SWT	60	495	6	12x48
180 BHW-4	13.4	4-1/2	15	1 1/2*	230/460	3	2 (15-12)	2-20x25 4-20x20	1 3/8" SWT	82	749	6	18x48

Additional charge for motors other than standard. Grille Adjustable four way directional louvers. Permanent, high velocity filters, standard, except on 180 BHW.

Specifications subject to change without notice.  
\* Base mounted motor, motor shipped separately.



### BHW - UNIT CABINET DIMENSIONS

MODEL	UNIT					BLOWER - OPENING OUTLET		Return Duct. Conn.		STUBOUT LOCATIONS FOR STANDARD BHW-4 UNITS										GPM	PD'
	A	B	C	D	■	F	G	K	L	1	2	3	4	5	6	7	8	9	10		
24 BHW-4	37	27	18	1	3/4 FPT	12 5/16	10 14/16	18	16	11 1/2	5 1/4	4	2 3/4	3 1/2	3 3/4	1 1/4	7 7/8	10	10 3/8	6.0	4.16
36 BHW-4	37	36 1/2	18	1	3/4 FPT	12 5/16	10 14/16	27 1/2	16	11 1/2	5 1/4	4	2 3/4	3 1/2	3 3/4	1 1/4	7 7/8	10	10 3/8	8.0	4.6
48 BHW-4	39	38	22	1	3/4 FPT	13 5/8	11 7/8	29	20	11 1/2	5 1/4	3 7/8	2	3 1/2	3 1/4	1 1/4	7 7/8	10	10 3/8	10.0	4.8
60 BHW-4	42	45	22	1	3/4 FPT	16 1/8	13 15/16	36	20	11 1/2	5 1/4	3 7/8	2	3 1/2	3 1/4	1 1/4	7 7/8	10	10 3/8	13.0	4.3
90 BHW-4	52 1/2	54	27	1	3/4 FPT	19 1/8	16 3/8	45	25	12 3/4	5 1/4	3 5/8	2 1/4	4	3 1/4	1 1/4	8 1/2	11 1/2	11 5/8	17.5	4.72
120 BHW-4	52 1/2	57	34	1	3/4 FPT	19 1/8	16 3/8	48	32	12 1/4	5 1/4	3 7/8	3	3 3/4	4 1/8	1 1/4	8 1/2	11 5/8	11 1/4	21.0	4.98
180 BHW-4	57 1/2	67 1/8	42	1	3/4 FPT	2 - 16 1/16	2 - 15 7/8	57 3/4	40 1/4											31.5	4.3

Optional hot water coils - knockouts located on both sides for either side stub outs. On 24 BHW through 60 BHW, coils are shipped separately for field installation through either side access panel. Factory installed on 90 BHW through 180 BHW. Factory installation on all models for preheat application.

### AIR VOLUME - CAPACITY - EXTERNAL RESISTANCE - MOTOR H.P. - R.P.M.

MODEL	C.F.M. Air Volume	Capacity BTU's Per Hour	0		.1		.2		.3		.4		.5	
			H.P.	R.P.M.	H.P.	R.P.M.	H.P.	R.P.M.	H.P.	R.P.M.	H.P.	R.P.M.	H.P.	R.P.M.
24 BHW-4	600	22,700	.10	490	.11	600	.14	700	.16	780	.18	870	.21	970
	800	26,400	.15	670	.17	720	.19	810	.21	880	.24	950	.27	1040
	1000	28,500	.20	790	.24	850	.27	930	.29	990	.32	1050	.34	1120
36 BHW-4	900	34,600	.13	530	.15	630	.18	720	.20	790	.23	870	.26	950
	1200	41,000	.21	710	.23	770	.27	840	.32	930	.33	980	.36	1030
	1500	44,100	.35	870	.39	930	.42	990	.46	1040	.49	1090	.54	1160
48 BHW-4	1200	45,700	.16	480	.20	550	.23	620	.26	710	.31	770	.33	840
	1600	51,600	.29	610	.32	710	.37	760	.41	810	.45	870	.49	930
	2000	57,800	.47	790	.53	830	.55	880	.63	940	.67	980	.71	1030
60 BHW-4	1500	57,100	.15	390	.19	450	.22	530	.28	590	.33	640	.37	700
	2000	66,000	.29	510	.34	560	.39	630	.44	690	.47	730	.51	770
	2500	71,400	.50	620	.54	670	.60	720	.66	770	.69	810	.72	850
90 BHW-4	2250	83,100	.21	330	.25	390	.32	440	.37	500	.43	540	.48	590
	3000	94,900	.42	430	.47	480	.52	520	.62	580	.68	610	.75	650
	3750	105,800	.73	530	.80	580	.87	610	.97	650	1.2	680	1.37	710
120 BHW-4	3000	107,500	.30	390	.38	450	.44	530	.56	590	.66	640	.74	700
	4000	121,500	.58	510	.68	560	.78	630	.88	690	.94	730	1.02	770
	5000	132,400	1.0	620	1.08	670	1.2	720	1.32	770	1.38	810	1.44	850
180 BHW-4	6000	187,500	1.0	480	1.2	530	1.4	560	1.6	585	1.8	620	2.0	650

Theoretical Ratings based on Ent. Air 80° D.B., 67° W.B., 45° Water.

