



WHHP

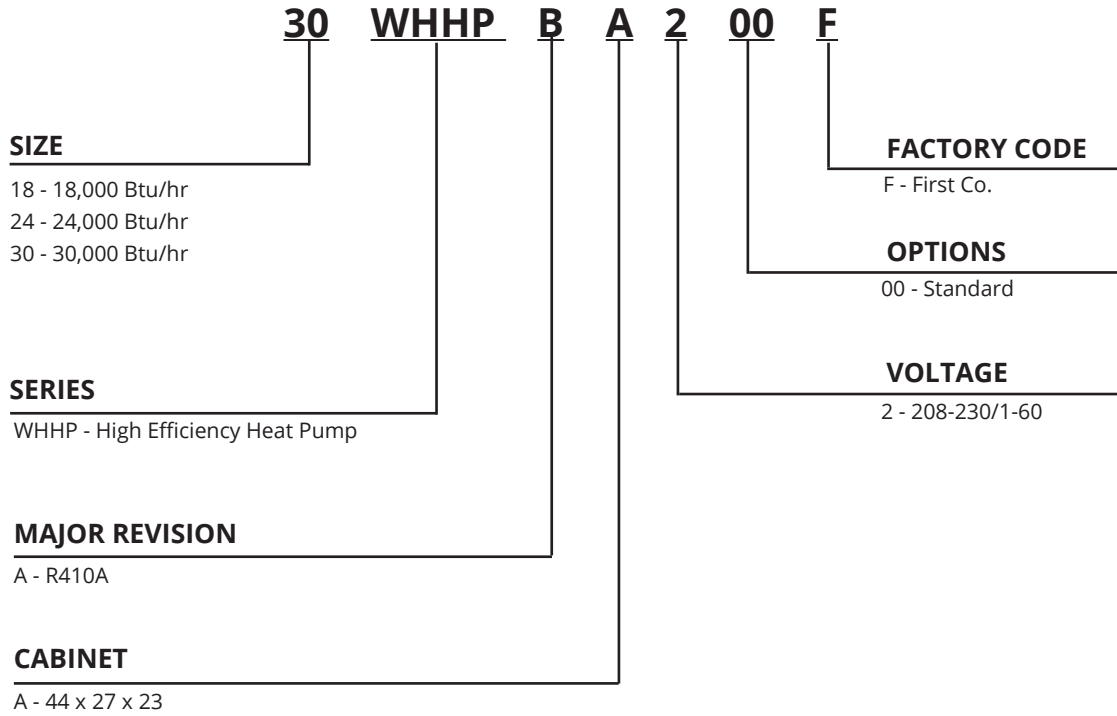
Through-the-Wall Heat Pump

1.5 - 2.5 Tons

SEER2



NOMENCLATURE



APPLICATION

The space and cost saving features of through the wall split heat pumps continue to be important to architects, engineers, multi-family developers, and today's projects that demand higher efficiency equipment.

First Co. is proud to introduce the high efficiency WHHP. By using the industry's latest state-of-the-art components such as ECM motors, high efficiency compressors, and enhanced coil technology, the WHHP heat pump achieves 11.9 - 13.0 SEER2 when combined with its matching First Co. high efficiency air handler. In addition, the heat pump's unique propeller-type fan blade operates at a slower speed and is much quieter than traditional squirrel cage type blowers.

For complete information visit www.firstco.com.

THROUGH-THE-WALL VS CONVENTIONAL CONDENSING UNITS

- Lower Installation Costs - WHHP heat pumps install on the same floor as the apartment, townhome, or condominium resulting in considerable cost savings in refrigerant, refrigerant piping, and electrical wiring compared to condensing units installed on the ground or roof.
- Easier to Service - Being located on the same floor as the apartment, town home, or condominium, service and routine maintenance of the WHHP is much easier and can be performed by one person.
- Through-the-wall units eliminate theft
- No costly landscaping needed to hide the units
- No heat pump support pads required
- No additional roof support expenses
- No chaseways to roof or ground needed for refrigerant lines

Factory Matched Indoor Air Handlers

The First Co. high efficiency **UCX** and **CLX** indoor air handlers are specifically designed to optimize the efficiency, cooling capacity, and overall performance of the **WHHP** heat pump.



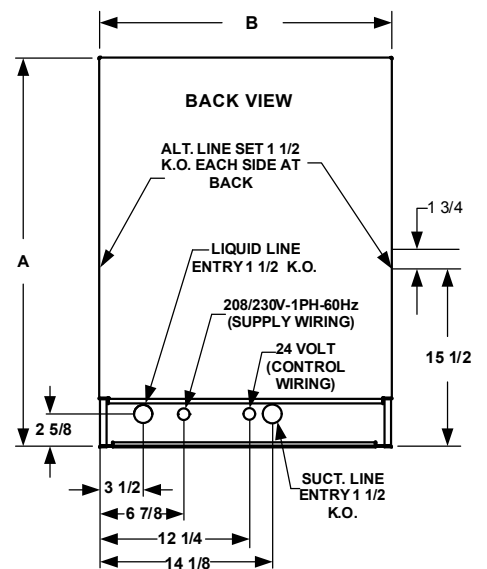
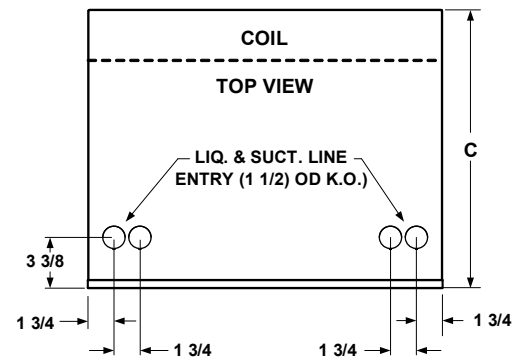
FEATURES

- High efficiency ECM motor
- Unique cabinet design - unit side panels fit inside rather than outside the base pan to improve water containment on the sides of the cabinet
- High efficiency scroll or reciprocating R-454B compressor
- High pressure switch
- Propeller type fan with ECM motor - Moves more air over the condenser coil at lower operating watts than standard "squirrel cage" type blower
- Lower RPM fan motor - Much quieter operation
- Factory charged with R-454B refrigerant - charge will need to be field adjusted
- Sloped base pan - Positive water drainage from the unit to the building exterior
- Plastic coated coil guard
- Cabinet has a durable, baked on powder coating

ELECTRICAL DATA 208/230V - 1PH - 60 Hz						
UNIT MODEL	COMPRESSOR		CONDENSER FAN		MIN. CIR. AMPACITY	MAX. OVERCURRENT PROTECTION
	RLA	LRA	HP	FLA		
19WHHP	7.18	47	1/3	2.8	13	20
24WHHP	9.17	59	1/3	2.8	15	30
30WHHP	10.45	71	1/3	2.8	17	30

UNIT MODEL	TOTAL BTUH COOLING	HEATING CAPACITY	HSPF	SEER
19WHHP	SEE RATINGS & MATCHES ON FIRSTCO.COM			
24WHHP				
30WHHP				

PHYSICAL DIMENSIONS					
UNIT MODEL	A	B	C	LIQ/SUCT. LINE CONN. (SWEAT)	APPROX. SHIP WT.
19WHHP	44	27	23	3/8 O.D. / 3/4 O.D.	265
24WHHP					270
30WHHP					280



WARNING AVERTISSEMENT ADVERTENCIA
 Cancer and Reproductive Harm
 Cancer et Troubles de l'appareil reproducteur
 Cáncer y Daño Reproductivo
www.P65Warnings.ca.gov LBY0057

OPTIONAL ACCESSORIES

OPTIONAL INSTALLATION SLEEVE (See matching grille)					
PART NUMBER	USE WITH	DESCRIPTION	DIMENSIONS		
			H	W	D
9WHS-1	All WHHP models	Sleeve installs in rough-in to facilitate heat pump installation and removal for service	45-1/2	27-1/2	13

OPT. ARCH. GRILLE (FIELD INSTALLED)				
PART (1) NUMBER	USE WITH	DIMENSIONS		
		H	W	D
G212A G212PPA G212S	All WHHP models	44	27	23

- Notes:
- "A" = Clear Anodized
"PPA" = Paint Prepared Aluminum
"S" Custom Painted
 - Grille screws to the "face" of the condensing unit in place of the factory wire guard.
 - Grilles can be factory painted almost any color. Contact the factory for additional information and cost.

OPTIONAL INSULATION JACKET					
PART NUMBER	USE WITH	DESCRIPTION	DIMENSIONS		
			H	W	D
9WHJ-1	All WHHP models	Insulation jacket	46-1/4	29-1/2	12



Insulation Jacket



Shown with Insulation Jacket Installed

In keeping with its policy of continuous progress and product improvement, First Co. reserves the right to make changes without notice.



FIRST CO.

P.O. BOX 270969 - DALLAS, TEXAS 75227
PH. (214) 388-5751 | FAX (214) 388-2255

MAY 2024