



FIRST CO.
P.O. BOX 270969 - DALLAS, TEXAS 75227
PH. (214) 388-5751 | FAX (214) 388-2255
WWW.FIRSTCO.COM

WHHP Series

ULTRA HIGH EFFICIENCY

Thru-the-wall HEAT PUMP

1.5 thru 2.5 Tons



WHHP Series

APPLICATION

The space and cost saving features of through the wall split heat pumps continue to be important to architects, engineers, and multi-family developers. However, today's projects demand higher efficiency equipment, and until now, the highest SEER available for through the wall units was 12 SEER.

First Co. is proud to introduce the high efficiency **WHHP** Series. By using the industry's latest state-of-the-art components, such as ECM motors, high efficiency compressors, and enhanced coil technology, the **WHHP** heat pump achieves **12.0 to 14.0 SEER** when combined with its matching First Co. high efficiency air handler. In addition, the heat pump's unique propeller-type fan blade operates at a slower speed and is much quieter than traditional squirrel cage type blowers.

THROUGH-THE-WALL VS CONVENTIONAL CONDENSING UNITS

- **Lower Installation Costs** - **WHHP** heat pumps install on the same floor as the apartment, townhome, or condominium resulting in considerable first cost savings in refrigerant, refrigerant piping, and electrical wiring compared to condensing units installed on the ground or roof.
- **Easier to Service** - Being located on the same floor as the apartment, town home, or condominium, service and routine maintenance of the **WHHP** is much easier and can be performed by one person.
- Through the wall units eliminate theft
- No costly landscaping needed to hide the units
- No heat pump support pads required
- No additional roof support expenses
- No chaseways to roof or ground needed for refrigerant lines

Factory Matched Indoor Air Handlers -

The First Co. high efficiency. **UCX** and **CLX** series indoor air handlers are specifically designed to optimize the efficiency, cooling capacity, and overall performance of the **WHHP** heat pump.



WHHP Series

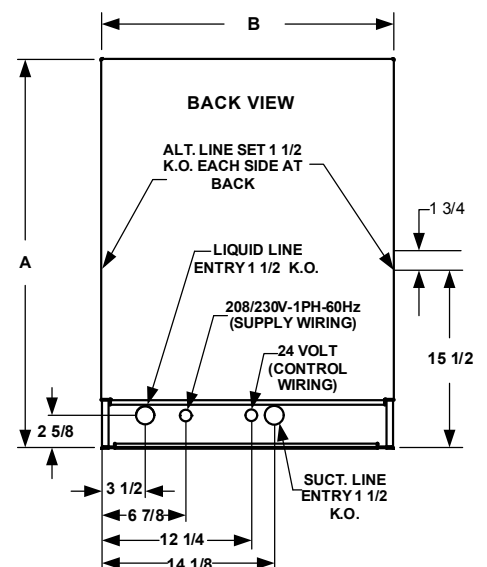
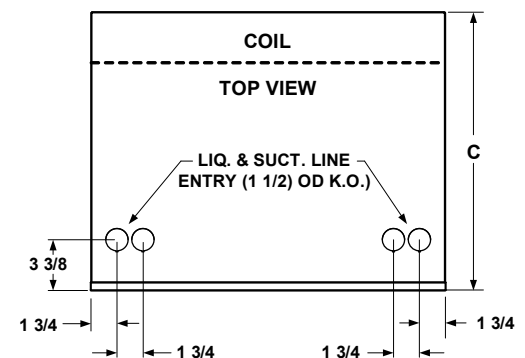
FEATURES:

- High efficiency ECM motor
- Unique cabinet design - unit side panels fit inside rather than outside the base pan to improve water containment on the sides of the cabinet
- High efficiency scroll or reciprocating R-410A compressor
- High pressure switch
- Propeller type fan with ECM motor - Moves more air over the condenser coil at lower operating watts than standard "squirrel cage" type blower
- Lower RPM fan motor - Much quieter operation
- Factory charged with R-410A refrigerant - charge will need to be field adjusted
- Sloped base pan - Positive water drainage from the unit to the building exterior
- Plastic coated coil guard
- Cabinet has a durable, baked on powder coating

ELECTRICAL DATA 208/230V - 1PH - 60 Hz						
UNIT MODEL	COMPRESSOR		CONDENSER FAN		MIN. CIR. AMPACITY	MAX. OVERCURRENT PROTECTION
	RLA	LRA	HP	FLA		
19WHHP	12.8	58.3	1/3	2.8	19	30
24WHHP	12.8	58.3	1/3	2.8	19	30
30WHHP	14.1	73	1/3	2.8	21	30

UNIT MODEL	TOTAL BTUH COOLING	HEATING CAPACITY	HSPF	SEER
19WHHP	SEE RATINGS MATCHES ON FIRSTCO.COM OR AHRIDIRECTORY.ORG			
24WHHP				
30WHHP				

PHYSICAL DIMENSIONS					
UNIT MODEL	H	W	D	LIQ/SUCT. LINE CONN. (SWEAT)	APPROX. SHIP WT.
19WHHP	44	27	23	3/8 O.D. / 3/4 O.D.	265
24WHHP					270
30WHHP					280



WHHP Series

OPTIONAL ACCESSORIES:

OPTIONAL INSTALLATION SLEEVE (See matching grille)					
PART NUMBER	USE WITH	DESCRIPTION	DIMENSIONS		
			H	W	D
9WHS-1	All WHHP models	Sleeve installs in rough-in to facilitate heat pump installation and removal for service	45-1/2	27-1/2	13

OPT. ARCH. GRILLE (FIELD INSTALLED)				
PART (1) NUMBER	USE WITH	DIMENSIONS		
		H	W	D
G212A G212PPA G212S	All WHHP models	44	27	23

Notes:

- "A" = Clear Anodized
"PPA" = Paint Prepared Aluminum
"S" Custom Painted
- Grille screws to the "face" of the condensing unit in place of the factory wire guard.
- Grilles can be factory painted almost any color. Contact the factory for additional information and cost.

OPTIONAL INSULATION JACKET					
PART NUMBER	USE WITH	DESCRIPTION	DIMENSIONS		
			H	W	D
9WHJ-1	All WHHP models	Insulation jacket	46-1/4	29-1/2	12



Insulation Jacket



Shown with Insulation Jacket Installed

In keeping with its policy of continuous progress and product improvement, First Co. reserves the right to make changes without notice. Maintenance for all First Co. products is available under "Product Maintenance" at www.firstco.com.



FIRST CO.
P.O. BOX 270969 - DALLAS, TEXAS 75227
PH. (214) 388-5751 | SALES@FIRSTCO.COM
WWW.FIRSTCO.COM