



WCX12

Through-the-Wall Split Unit

1.5 thru 2.5 Ton

WCX12-AB

WCX12-BB



WCX12

STANDARD FEATURES

- Factory charged with R-410A refrigerant (charge will need to be field-adjusted)
- Unique cabinet design - unit side panels fit inside rather than outside the base pan to improve water containment on the sides of the cabinet
- Extra-high efficiency scroll or reciprocating R-410A compressor
- High pressure switch
- Propeller type fan - Moves more air over the condenser coil at lower operating watts than standard "squirrel cage" type blower
- Sloped base pan - Positive water drainage from the unit to the building exterior
- Plastic coated coil guard

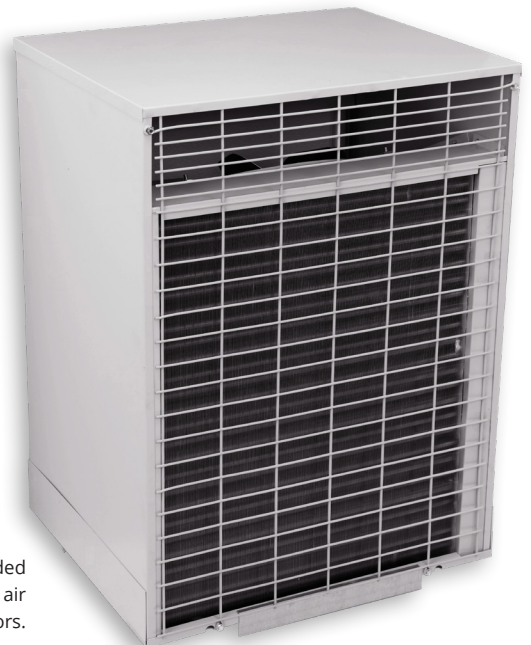
APPLICATION

These condensing units are excellent replacement products for the thousands of existing through-the-wall condensing units.

COMPARISON

THROUGH-THE-WALL **VS** CONVENTIONAL CONDENSING UNITS

- Lower Installation Costs - WCX12 condensing units install on the same floor as the apartment, town home, or condominium, resulting in considerable first cost savings in refrigerant, refrigerant piping, and electrical wiring compared to condensing units installed on the ground or roof.
- Easier to Service - Being located on the same floor as the apartment, town home, or condominium, service and routine maintenance of the WCX12 is much easier and can be performed by one person.
- Eliminates theft problems
- No costly landscaping needed to hide the units
- No condensing unit support pads required
- No additional roof support expenses
- No chase-ways to roof or ground needed for refrigerant lines



WCX Series units are sold and intended for use only with blower coil and air handler units with ECM motors.

OPTIONAL ACCESSORIES

WCX12-AB

OPT. ARCH. LOUVER (FIELD INSTALLED)				
PART NUMBER	FOR USE ON	DIMENSIONS		
		H	W	D
G200A(PPA)(S)	18WCX12-AB 24WCX12-AB 30WCXA12-AB	32	24	1-1/4

NOTES:

- "A" = Clear Anodized
"PPA" = Paint Prepared Aluminum
"S" Custom Painted
- Louver screws to the "face" of the condensing unit in place of the factory wire guard.
- Louver can be factory painted almost any color. Contact the factory for additional information and cost.

OPTIONAL INSTALLATION SLEEVE(S) (See matching louver)					
PART NUMBER	FOR USE ON	DESCRIPTION	DIMENSIONS		
			H	W	D
928-3	All "AB" models only	Sleeve installs in rough-in to facilitate condensing unit installation and removal for service	33-3/8	24-1/4	11-3/4



(Optional Architectural Louver)

WCX12-BB

OPT. ARCH. LOUVER (FIELD INSTALLED)				
PART NUMBER	FOR USE ON	DIMENSIONS		
		H	W	D
G200BBA	18WCX12-BB 24WCX12-BB 30WCXA12-BB	28	25-3/4	1-1/4

NOTES:

- G200BBA has clear anodized finish.
- Louver screws to the "face" of the condensing unit in place of the factory wire guard.

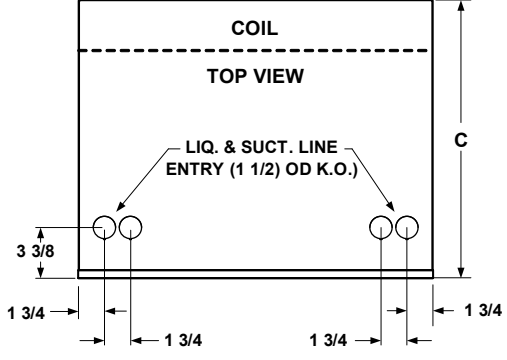
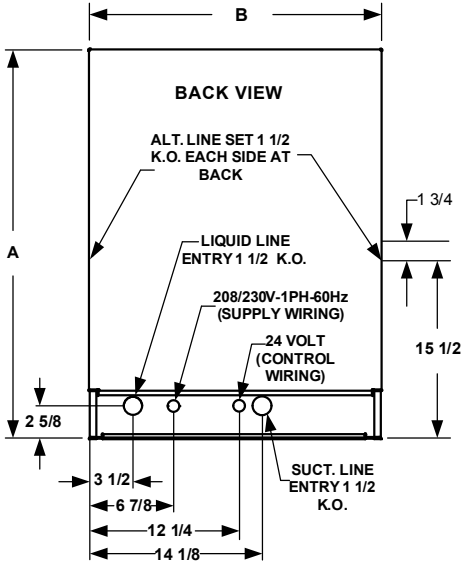


(Optional Architectural Louver)

NOTE:
To determine certified indoor/outdoor combinations, go to www.ahridirectory.org or www.firstco.com.



WCX12-AB



NOTE:
Liquid line valve is located on left side.
Suction line valve is located on right side.

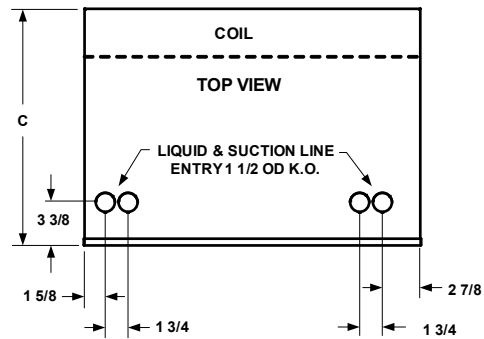
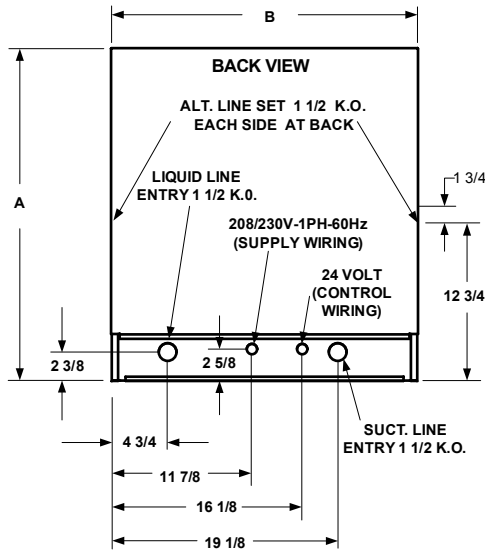
PHYSICAL DIMENSIONS					
UNIT MODEL	A	B	C	LIQ/SUCT. LINE CONN. (SWEAT)	APPROX. SHIP WT.
18WCX12-AB	32	24	19	3/8 O.D. / 3/4 O.D.	200
24WCX12-AB					
30WCXA12-AB					

ELECTRICAL DATA 208/230V - 1PH - 60 Hz						
UNIT MODEL	COMPRESSOR		CONDENSER FAN		MIN. CIR. AMPACITY	MAX. HACR BREAKER
	LRA	RLA	FLA	HP		
18WCX12-AB	48	9.0	1.2	1/4	13	20
24WCX12-AB	58.3	12.8	1.2	1/4	18	30
30WCXA12-AB	73	14.1	2.8	1/3	21	30

NOTE:
Compressor start assist devices (capacitor and start potential relay) may be required on WCX units with scroll compressors for installations with long line length, unusually high or low ambient operating conditions, thermostatic expansion valves or any other situation which can lead to slow off cycle pressure equalization and excessive compressor starting problems.

NOTE:
R-410A refrigerant oil is not compatible with R-22 oil. Therefore, when R-410A outdoor units are replacing existing R-22 outdoor units, the indoor evaporator coil must be replaced with a new one, the coil must include an R-410A TXV, and the interconnecting refrigerant lines flushed.

WCX12-BB



NOTE:

Liquid line valve is located on left side.
Suction line valve is located on right side.

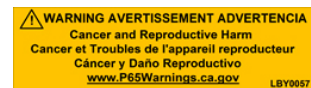
PHYSICAL DIMENSIONS					
UNIT MODEL	A	B	C	LIQ/SUCT. LINE CONN. (SWEAT)	APPROX. SHIP WT.
18WCX12-BB	28	25-3/4	19	3/8 O.D. / 3/4 O.D.	200
24WCX12-BB					
30WCXA12-BB					

ELECTRICAL DATA 208/230V - 1PH - 60 Hz						
UNIT MODEL	COMPRESSOR		CONDENSER FAN		MIN. CIR. AMPACITY	MAX. HACR BREAKER
	LRA	RLA	FLA	HP		
18WCX12-BB	48	9.0	1.2	1/4	13	20
24WCX12-BB	58.3	12.8	1.2	1/4	18	30
30WCXA12-BB	73	14.1	2.8	1/3	21	30

NOTE:

Compressor start assist devices (capacitor and start potential relay) may be required on WCX units with scroll compressors for installations with long line length, unusually high or low ambient operating conditions, thermostatic expansion valves or any other situation which can lead to slow off cycle pressure equalization and excessive compressor starting problems.

NOTE:
R-410A refrigerant oil is not compatible with R-22 oil. Therefore, when R-410A outdoor units are replacing existing R-22 outdoor units, the indoor evaporator coil must be replaced with a new one, the coil must include an R-410A TXV, and the interconnecting refrigerant lines flushed.



In keeping with its policy of continuous progress and product improvement, First Co. reserves the right to make changes without notice.



FIRST CO.
P.O. BOX 270969 - DALLAS, TEXAS 75227
PH. (214) 388-5751 | FAX (214) 388-2255
WWW.FIRSTCO.COM

MARCH 2024