

WITH ECM MOTOR!!



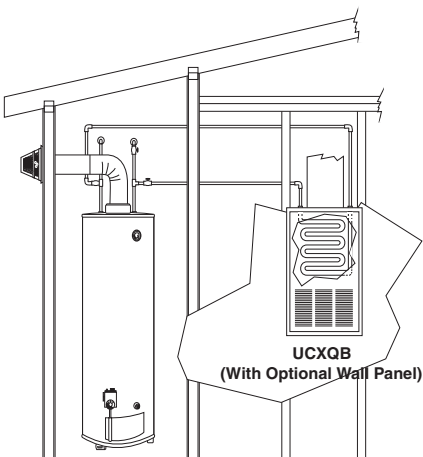
UCXQB Series

Wall / Closet Fan Coils

1.0 - 3.0 Tons Cooling or Heat Pump
Up to 41,700 BTUH Hydronic Heat



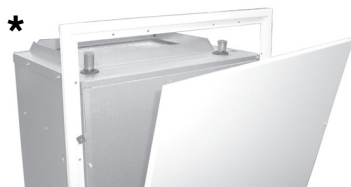
(Standard Unit shown)
(Closet application - Front Return Air)



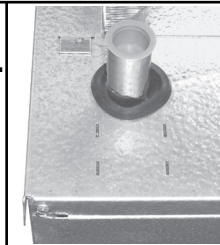
UCXQB
(With Optional Wall Panel)

**New! non-swaged
strait pipe connections.**

*** Accessible HW
Connections**



Unit shown with optional louvered wall panel
(Recessed wall application)



These upflow air handlers are designed for use with today's higher efficiency split-system condensing units and heat pumps. All UCXQB fan coils include an ECM motor. These motors offer the efficiency of a variable speed type ECM motor, but at a considerably lower cost.

The UCXQB can be installed on a closet platform, hung on a closet wall, or recessed in a wall between the studs. All models are 22" wide to allow standard stud spacing for all sizes.

(1) First Co's customer is ultimately responsible for confirming which fan coil models are compatible with selected outdoor unit(s) and which expansion valves (if any) are required. to determine approved indoor/outdoor matches, go to: www.firstco.com or contact the factory.

These fan coils are compatible with any source of hot water that doesn't exceed 180° and is NSF/ANSI certified for use with domestic water.

Standard Features:

- High efficiency X13 motor
- Multi-function micro-processor control board
- 120V motor, 24V controls
- Factory or field installed R-410A TXV (cooling or heat pump operation).
- Blower door shut-off switch
- Non-corrosive thermoplastic drain pan, sloped for positive drainage with 3/4" MPT primary and secondary connections
- Separate compartment for drain connections allows the field use of PVC drain piping
- Hot water coil assembly includes a circulating pump, easy access anti-siphon check valve, and air purge valve
- Easily accessible 1" throwaway filter

★ Optional Features: (see Page 4)

- Optional features include wall panels with captive screws, condensate overflow switch, closet hanger bracket kit, and bottom return air kit.

Unique Feature - In recessed wall applications utilizing the optional wall panel (#9PWUC03L), the hot water coil can be removed without modifications to the drywall. To allow this feature, the top of the UCXQB cabinet is notched for coil removal and the wall panel is 3" taller than the cabinet.



UCXQB Series

Compatible with gas fired water heaters

Up to 41,700 BTUH Hydronic Heat

(See P. 3 for Model Numbers)

PERFORMANCE DATA									
UNIT MODEL	NOMINAL COOLING BTUH	HEATING BTUH (1000) AT ENTERING WATER TEMPERATURE (1) Delta-T 20°F & GPM				TOTAL AMPS (MOTOR) (120V)	TOTAL AMPS (PUMP) (120V)	MIN. CIRCUIT AMPACITY	MAX. FUSE OR HACR BREAKER
		120°F		140°F					
12UCXQB	12,000	11.1	1.1	15.6	1.6	3.5	0.57	5	15
19/20UCXQB	18,000	18.5	1.85	25.9	2.6	4.8	0.57	7	15
25/26UCXQB	24,000 / 18,000	22.1	2.2	31.0	3.1	6.8	0.57	9	15
31UCXQB	30,000 / 24,000	25.0	2.5	35.1	3.5	6.8	0.57	9	15
32UCXQB	30,000 / 24,000	27.0	2.7	37.7	3.8	8.4	0.57	11	15
37UCXQB	36,000 / 30,000	29.6	3.0	41.3	4.1	8.4	0.57	11	15
38UCXQB	36,000 / 30,000	29.8	3.0	41.7	4.1	8.4	0.57	11	15

NOTES:

1. Heating output will not exceed output of hot water source.
 2. Approved for installation with 0" clearance to combustible materials.
 3. Contact factory for correct matches with outdoor unit.
- (1) Heat BTUH is at 70°F entering air temperature.
 (2) Based on 20° Delta -T. Velocity not to exceed 4ft./sec.

BLOWER DATA												
UNIT MODEL	MOTOR H.P. (120V)	TOTAL AMPS	BHP	MOTOR AMPS	SPEED TAP	CFM vs. EXTERNAL STATIC PRESSURE						
						0.10	0.15	0.20	0.25	0.30	0.40	0.50
12UCXQB	1/4	3.5	.11	1.6	WHT	575	555	540	525	505	465	425
			.09	1.3	VIO	525	505	490	470	450	405	360
			.04	0.5	GRY	300	275	250	225	200	155	---
19/20UCXQB	1/3	4.8	.24	3.0	3	690	675	660	645	630	600	570
			.21	2.6	2	650	630	610	590	570	540	510
			.16	1.7	1	530	510	490	470	450	420	390
25/26UCXQB	1/2	6.8	.36	4.1	3	880	865	850	835	820	790	760
			.23	2.4	2	670	655	640	625	610	580	550
			.17	1.7	1	570	550	530	515	500	470	440
31UCXQB	1/2	6.8	.50	5.1	3	930	910	890	870	850	810	760
			.34	3.6	2	800	785	770	750	730	700	690
			.22	2.1	1	610	595	580	565	550	510	480
32UCXQB	3/4	8.4	.37	4.2	3	1010	1000	990	975	960	930	900
			.24	2.6	2	790	775	760	745	730	700	670
			.20	2.0	1	700	685	670	650	630	600	560
37UCXQB	3/4	8.4	.75	6.7	3	1250	1230	1210	1190	1170	1120	1070
			.49	5.5	2	1110	1095	1080	1065	1050	1020	990
			.37	4.0	1	940	925	910	895	880	850	820
38UCXQB	3/4	8.4	.47	5.6	3	1240	1230	1220	1205	1190	1160	1130
			.38	5.2	2	1100	1090	1080	1065	1050	1020	990
			.25	2.3	1	860	845	830	815	800	760	730

NOTES:

1. Add nominal .05 static when optional wall panel is used.

UNIT MODEL	NOM. COOLING BTUH	MOTOR SPEED TAP CONNECTION	
		HIGH SPD (VIO LEAD)	LOW SPD (GRY LEAD)
12UCXQB	12,000	VIO	GRY
19/20UCXQB	18,000	2	1
25/26UCXQB	18,000	2	1
	24,000	3	2
31/32UCXQB	24,000	2	1
	30,000	3	2
37/38UCXQB	30,000	2	1
	36,000	3	2

RECOGNIZED COMPONENT



Intertek

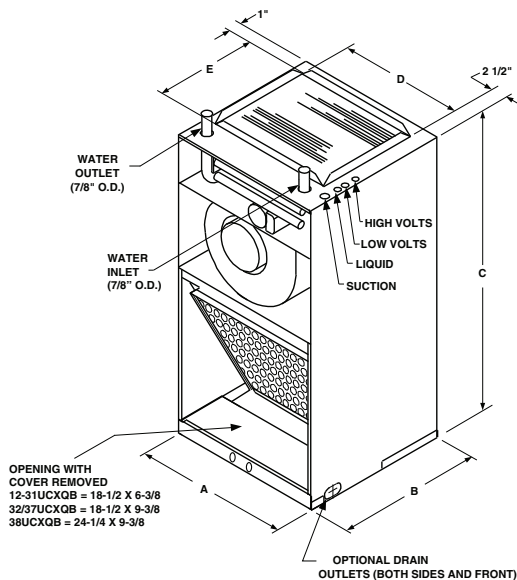
NSF/ANSI
169:2016



UCXQB Series

Compatible with gas fired water heaters

Up to 43,900 BTUH Hydronic Heat



PHYSICAL DIMENSIONS								
UNIT MODEL	A	B	C	D	E	FILTER SIZE	LIQUID LINE	SUCTION LINE
12-25UCXQB	22-1/8	18	43	18	12-1/2	18 X 18	3/8" O.D.	5/8" O.D.
26/31UCXQB	22-1/8	18	43	18	12-1/2	18 X 20	3/8" O.D.	3/4" O.D.
32/37UCXQB	22-1/8	21	43	18	15-1/2	18 X 24	3/8" O.D.	3/4" O.D.
38UCXQB	28-1/8	21	46	24-1/8	15-3/4	24 X 24	3/8" O.D.	7/8" O.D.

NOTES:

1. All coil connections are sweat

MODEL NUMBERS:

MODEL SIZE (BTU COOLING)	MODEL (PISTON)	MODEL (R410 TXV)
12,000	12UCXQB	12UCXQB R410 TXV
18,000	19/20UCXQB	19UCXQB R410 TXV
18,000 / 24,000	25/26UCXQB	25UCXQB R410 TXV
24,000 / 30,000	31/32UCXQB	31UCXQB R410 TXV
30,000 / 36,000	37/38UCXQB	37UCXQB R410 TXV

In keeping with its policy of continuous progress and product improvement, First Co. reserves the right to make changes without notice. Maintenance for all First Co. products is available under "Product Maintenance" at www.firstco.com.

All TXV's are approved for cooling only or heat pump operation.

NOTE:

Expansion valve requirement depends on the selected outdoor unit.
Go to: www.firstco.com or contact the factory for assistance.

(See P. 4 for Optional Accessories)

WARNING AVERTISSEMENT ADVERTENCIA
Cancer and Reproductive Harm
Cancer et Troubles de l'appareil reproducteur
Cáncer y Daño Reproductivo
www.P65Warnings.ca.gov LBY0057

ALL UCXQB OPTIONAL ACCESSORIES (FIELD INSTALLED)				
DESCRIPTION	PART NO.	FOR	DIMENSIONS	
			Outside Frame	Inside Frame
LOUVERED WALL PANEL (1)	9PWUC03L	12-37UCXQB	49-3/8 X 25-5/8	46-3/8 x 22-5/8
SOLID WALL PANEL (1)	9PWUC03S	12-37UCXQB	49-3/8 X 25-5/8	46-3/8 x 22-5/8
LOUVERED WALL PANEL (1)	9PWUC04L	38UCXQB	52-1/2 X 31-5/8	49-1/2 X 28-5/8
SOLID WALL PANEL (1)	9PWUC04S	38UCXQB	52-1/2 X 31-5/8	49-1/2 X 28-5/8
CLOSET BRKT.	90PK3	12-37UCXQB	1-3/4 X 22-1/8	---
	90PK31	38UCXQB	1-3/4 X 27-15/16	---
BOTTOM RETURN AIR KIT	90PK5	12-37UCXQB	20-7/16 X 22	---
	90PK51	38UCXQB	20-5/8 X 28	---
CONDENSATE OVERFLOW SWITCH	SS3	ALL UCXQB	---	---
FREEZE (2) PROTECTOR	941-1	ALL UCXQB	---	---

NOTES:

- (1) Wall panels are taller than the UCXQB cabinet to allow access to hot water coil connections.
- (2) Energizes the pump if HW coil temperature falls below 40°.

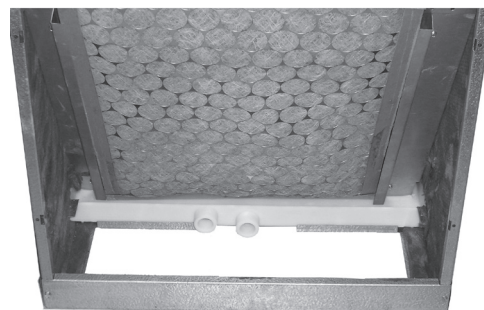
EXPANSION VALVE KITS (Heat Pump or Cooling Only) (FIELD INSTALLED)		
PART NO.	TYPE	FOR
9EVR410-1	R-410A	12 - 38UCXQB (1-1/2 - 3 TON)

NOTES:

1. Expansion valve kits are approved for both cooling only (non heat pump) or heat pump applications.
2. Valves are non-bleed type.
3. Valves mount inside unit cabinet



Optional wall panel
(Recessed wall application)



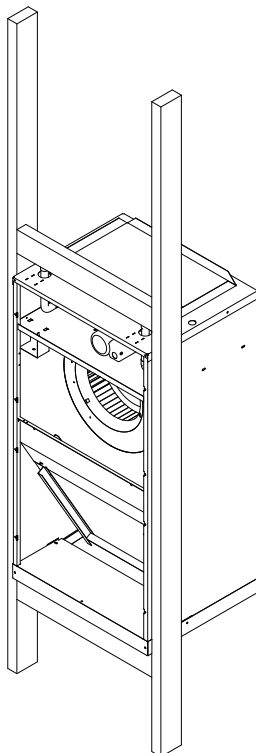
Condensate drain connections
(With drain cover removed)
(Thermoplastic pan shown)



Condensate Overflow Switch
#SS3



Unit shown with front panel
removed



Typical recessed
wall installation



Unit shown with optional
bottom return air kit