



FIRST CO.
P.O. BOX 270969 - DALLAS, TEXAS 75227
PH. (214) 388-5751 | FAX (214) 388-2255
WWW.FIRSTCO.COM

HCXX Series

High Efficiency ECM

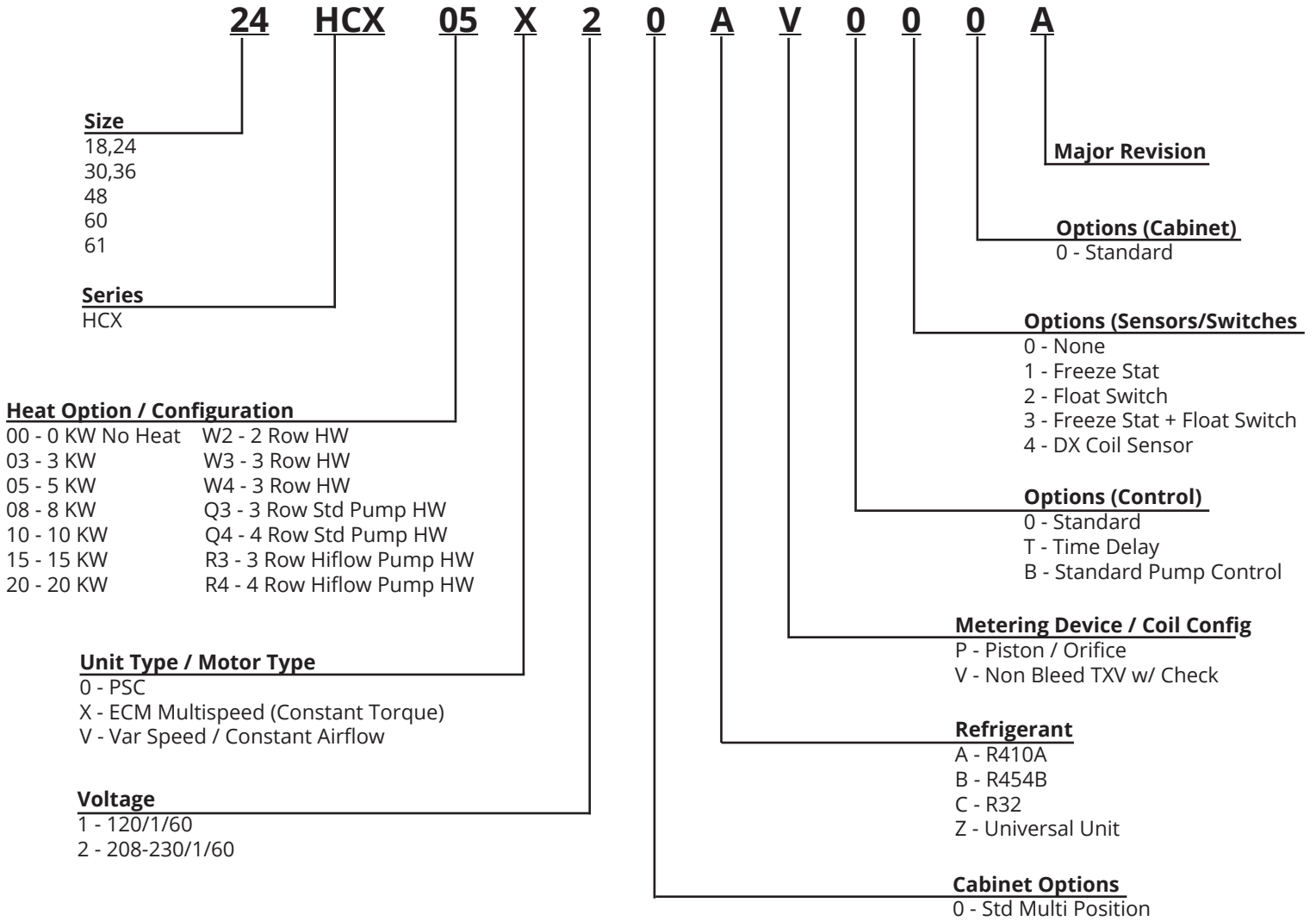
HCXX Series

Upflow/Horizontal
Cooling or Heat Pump
1.5 - 5 Tons Cooling
0 - 20 kW Electric Heat



The HCXX air handler is designed for use with today's high efficiency split-system condensing units and heat pumps. All HCXX air handlers include a standard ECM motor.

Nomenclature



HCXX Series

The **HCXX** air handler is designed for use with today's high efficiency split-system condensing units and heat pumps. All **HCXX** air handlers include a standard **ECM motor**. These motors offer the efficiency of variable speed type **ECM motors**, but at a considerably lower cost.

Cooling efficiencies are up to **16 SEER2**, depending on the outdoor unit.

Standard configuration from the factory is upflow and horizontal (right-to-left airflow). All sizes can be easily re-configured in the field for horizontal (left-to-right) airflow.

(1) First Co's customer is ultimately responsible for confirming which fan coil models are compatible with selected outdoor unit(s) and which expansion valves (if any) are required. To determine certified indoor/outdoor matches, **go to www.ahridirectory.org, www.firstco.com or contact the factory.**



HCXX Air Handler

STANDARD FEATURES:

- **High efficiency standard ECM motor**
- 240V motor, 24V controls
- Factory or field installed R-410A TXV (cooling or heat pump operation) (non-bleed type)
- High efficiency copper tube, aluminum fin coils
- Non-corrosive thermoplastic drain pan (vertical only), sloped for positive drainage, with 3/4" MPT primary and secondary drain connections
- Factory installed disconnect (15 and 20 kW only)
- Easily accessible 1" throwaway filter
- **Cabinet air leakage is no more than 2% when tested in accordance with ASHRAE 193.**

HCXX Series

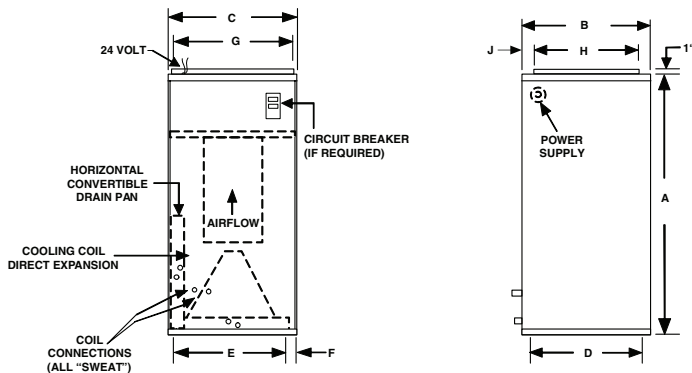
BLOWER DATA									
UNIT MODEL	MOTOR HP	SPEED TAP	MOTOR BHP	NOM. AMPS	CFM vs. EXTERNAL STATIC PRESSURE				
					0.10	0.20	0.30	0.40	0.50
18HCX**X	1/3	3	0.21	1.5	910	870	830	790	730
		2	0.14	0.9	750	710	670	620	570
		1	0.14	0.9	750	710	670	620	570
24HCX**X	1/3	4	0.33	2.0	1030	960	890	810	730
		3	0.21	1.5	880	840	800	760	700
		2	0.14	0.9	710	670	630	580	530
30HCX**X	1/2	3	0.38	2.4	1360	1330	1300	1270	1230
		2	0.29	1.6	1180	1140	1100	1060	1020
		1	0.29	1.6	1180	1140	1100	1060	1020
36HCX**X	1/2	4	0.47	3.2	1500	1450	1390	1330	1270
		3	0.38	2.4	1330	1300	1270	1230	1190
		2	0.29	1.6	1150	1110	1070	1030	990
42HCX**X 48HCX**X	1	4	0.72	4.1	1790	1740	1700	1670	1640
		3	0.68	3.8	1730	1690	1650	1610	1570
		2	0.51	2.6	1470	1430	1390	1350	1300
		1	0.36	1.6	1200	1160	1110	1050	970
60HCX**X	1	3	0.98	6.5	2100	2060	2020	1980	1940
		2	0.85	5.1	1930	1890	1850	1810	1770
		1	0.68	3.7	1700	1660	1620	1580	1540
61HCX**X	1	3	0.99	6.6	2120	2080	2040	2000	1960
		2	0.86	5.2	1950	1910	1870	1830	1790
		1	0.69	3.8	1715	1675	1635	1595	1555

NOTES:

Use 48HCX**X for 3.5 ton applications and field convert to medium speed for cooling.
Shaded speed taps are factory settings (higher speed is cooling).

Data is subject to change. Please verify most current information on www.firstco.com or www.AE-Air.com websites.

PHYSICAL DIMENSIONS												
UNIT MODEL	A	B	C	D	E	F	G	H	J	LIQ. (SWEAT)	SUCT. (SWEAT)	FILTER
18/24HCX**X	40	20	20	18-1/2	16	2	18	16	3	3/8	5/8	18 X 20 X 1
30/36HCX**X	42	23	20	21-1/2	16	2	18	17	5	3/8	3/4	20 X 22 X 1
42/48/60HCX**X	48	28	21-1/4	26-1/4	17	2	19-1/4	18-1/4	8-7/8	1/2	7/8	20 X 25 X 1
61HCX**X	54	28	21-1/4	26-1/4	17	2	19-1/4	18-1/4	8-7/8	1/2	7/8	20 X 25 X 1



WARNING AVERTISSEMENT ADVERTENCIA
Cancer and Reproductive Harm
Cancer et Troubles de l'appareil reproducteur
Cáncer y Daño Reproductivo
www.P65Warnings.ca.gov LB90057



PERFORMANCE DATA													
UNIT MODEL	NOM. CFM	(1) NOM. COOL BTUH	ELECTRIC HEAT CAPACITY				TOTAL AMPS		MIN. CIR. AMPACITY		MAX. FUSE OR HACR BREAKER		
			kW		BTUH		240V	208V	240V	208V	240V	208V	
			240V	208V	240V	208V							
18HCX**X & 24HCX**X	-0	600	18,000	0	0	0	0	2.8	2.8	-	-	15	15
	-3			3	2.3	10,200	7,700	15.3	13.6	20	17	20	20
	-4			4	3	13,600	10,200	19.5	17.2	25	22	25	25
	-5	800	24,000	5	3.8	17,000	13,000	23.6	20.8	30	26	30	30
	-6			6	4.5	20,500	15,400	27.8	24.4	35	31	35	35
	-8			8	6	27,300	20,500	36.1	31.6	46	40	50	40
-10			10	7.5	34,100	25,600	44.5	38.9	56	49	60	50	
30HCX**X & 36HCX**X	-0	1,000	30,000	0	0	0	0	4.1	4.1	-	-	15	15
	-5			5	3.8	17,000	13,000	24.9	22.1	32	28	35	30
	-8			8	6	27,300	20,500	37.4	32.9	47	42	50	45
	-10	1,200	36,000	10	7.5	34,100	25,600	45.8	40.2	58	51	60	60
	(2) -15			15	11.3	51,100	38,500	45.8	40.2	58	51	60	60
								20.8	18	26	23	30	25
42HCX**X & 48HCX**X	-0	1,600	48,000	0	0	0	0	7.6	7.6	-	-	15	15
	-5			5	3.8	17,000	13,000	28.4	25.6	36	32	40	35
	-8			8	6	27,300	20,500	40.9	36.4	52	46	60	50
	-10	(2)	48,000	9.5	7.1	34,100	25,600	47.2	41.9	59	53	60	60
	-15			14.5	10.9	51,100	38,500	47.2	41.9	59	53	60	60
								20.8	18	26	23	30	25
-20			19.5	14.6	68,200	51,100	47.2	41.9	59	53	60	60	
							41.6	36	52	45	60	45	
60HCX**X & 61HCX**X	-0	2,000	60,000	0	0	0	0	7.6	7.6	-	-	15	15
	-5			5	3.8	17,000	13,000	28.4	25.6	36	32	40	35
	-8			8	6	27,300	20,500	40.9	36.4	52	46	60	50
	-10	(2)	60,000	9.5	7.1	34,100	25,600	47.2	41.9	59	53	60	60
	(2) -15			14.5	10.9	51,100	38,500	47.2	41.9	59	53	60	60
								20.8	18	26	23	30	25
(2) -20			19.5	14.6	68,200	51,100	47.2	41.9	59	53	60	60	
							41.6	36	52	45	60	45	

NOTES:

1. Nom. cooling at 45°F suction temp. 80°F DB / 67°F WB air on.
2. 15kW and 20kW models require 2 supply circuits.
3. Units suitable for installation with 0" clearance to combustible material.

Data is subject to change. Please verify most current information on www.firstco.com or www.AE-Air.com websites.

Model Numbers:

MODEL SIZE (BTU)	MODEL (PISTON)	FACTORY INSTALLED TXV'S
		MODEL (R-410A TXV)
18,000	18HCX**X(*)	18HCX**X(*) R410A TXV
24,000	24HCX**X(*)	24HCX**X(*) R410A TXV
30,000	30HCX**X(*)	30HCX**X(*) R410A TXV
36,000	36HCX**X(*)	36HCX**X(*) R410A TXV
42,000/48,000	42/48HCX**X(*)	42/48HCX**X(*) R410A TXV
60,000	60/61HCX**X(*)	60/61HCX**X(*) R410A TXV

All TXV's are approved for cooling only or heat pump operation (non-bleed type).

(*) = kW HEAT

NOTE:

Expansion valve requirement depends on the selected outdoor unit.

go to www.ahridirectory.org, www.firstco.com or contact the factory.

ACCESSORIES:

EXPANSION VALVE KITS (Field installed) (cooling only or heat pump)	
R-410A	FOR
9EVR410-3	18/24HCX**X
9EVR410-4	30/36HCX**X
9EVR410-5	42/48/60/61HCX**X

NOTES:

1. Above expansion valve kits are approved for both cooling only (non heat pump) and heat pump applications.
2. Valves are non-bleed type. Field added. Hard start kit may be required.
3. Valves have screw-on connections.



FIRST CO.
P.O. BOX 270969 - DALLAS, TEXAS 75227
PH. (214) 388-5751 | SALES@FIRSTCO.COM
WWW.FIRSTCO.COM