



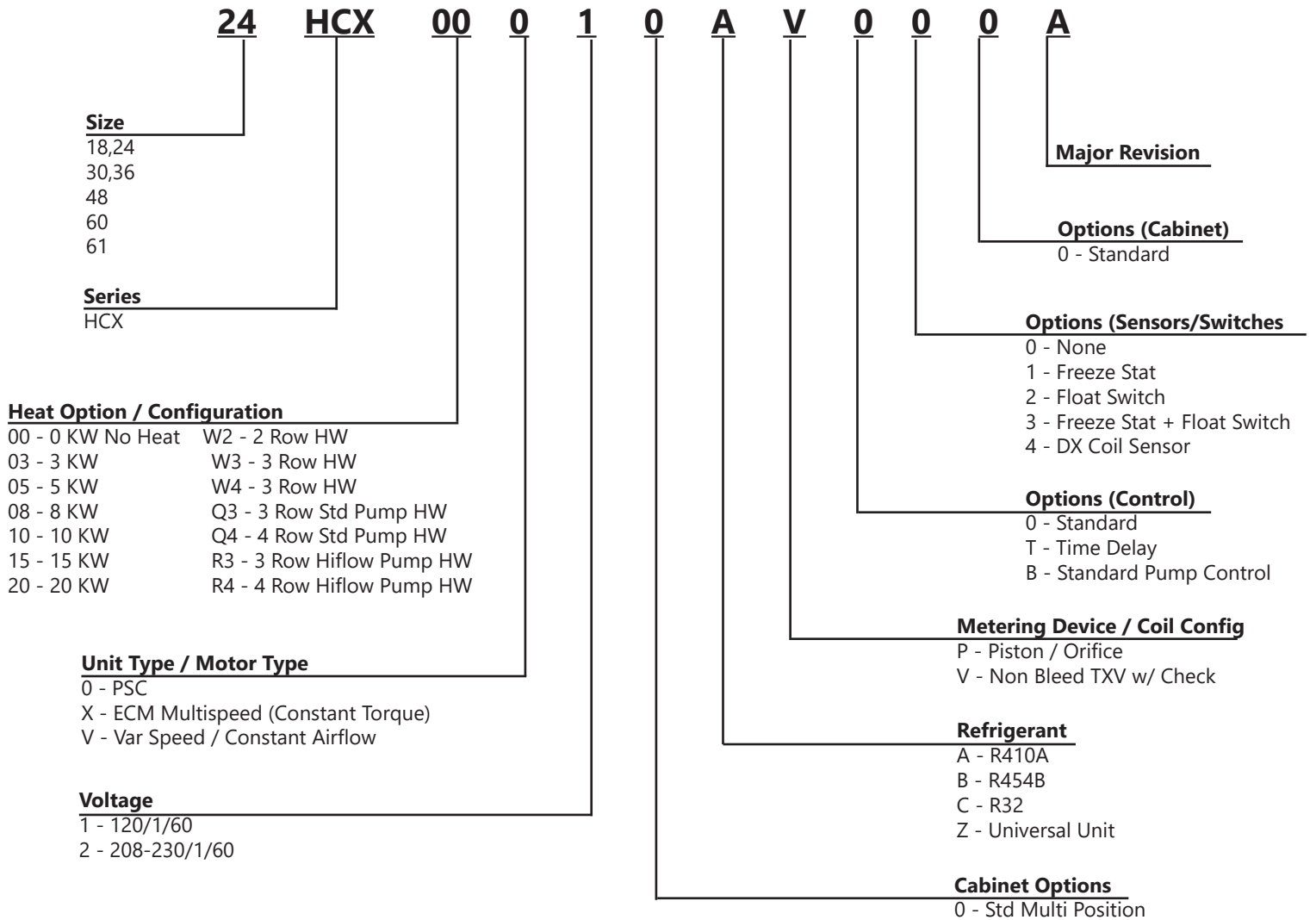
HCX (120V) PSC

Air Handler

Vertical / Horizontal
Cooling or Heat Pump
1.5 - 5 Tons Cooling



Nomenclature



HCX (120V) Series

The **HCX (120V)** series air handler is designed to offer the industry an air handler that includes every available feature as well as up to **15 SEER2** when matched with today's higher efficiency condensing units and heat pumps.

The **HCX (120V)** is completely factory assembled with a cooling coil, 120V motor, 24V transformer, horizontal drain pan, and throw away filter.

All components are installed within a fully insulated, galvanized steel cabinet with an attractive powder coated finish with **2% or less leak loss**.

(1) First Co's customer is ultimately responsible for confirming which fan coil models are compatible with selected outdoor unit(s) and which expansion valves (if any) are required. To determine certified indoor/outdoor matches, go to www.ahridirectory.org



HCX (120V) Air Handler

STANDARD FEATURES:

- Factory installed TXV kits (non-bleed type) for optimum cooling performance
- Three-way airflow (except 60/61 HCX (120V))
- Factory installed horizontal drain pan
- Completely prewired with 0 electric heat
- Compatible with major brands of split condensing units and heat pumps (Contact factory for correct match with outdoor unit)
- Cabinet air leakage is no more than 2% when tested in accordance with ASHRAE 193
- Factory installed filter
- Attractive baked on finish
- Copper tube cooling coils
- Primary and secondary drain connections on cooling coil
- Fully insulated and painted galvanized steel cabinet

HCX (120V) Series

Efficiency:

The **HCX (120V)** series air handler is the latest state-of-the-art air handler for heat pump or straight cool (DX) operation. Depending on the condensing unit or heat pump used, cooling efficiency is up to 15 SEER2 depending on the outdoor unit. Cooling coils have factory installed R410A TXVs and are circuited for cooling or heat pump operation.

First Co's customer is ultimately responsible for confirming which fan coil models are compatible with selected outdoor unit(s) and which expansion valves (if any) are required. To determine certified indoor/outdoor matches, go to: www.ahridirectory.org.

Components:

Each air handler includes a high efficiency cooling coil, pre-wired, 120V fan motor, 24V transformer, horizontal drain pan, and throw away filter.

Cabinets:

Cabinets are fully insulated and painted with an attractive, baked-on powder coating (light gray). **Cabinet air leakage is no more than 2% when tested in accordance with ASHRAE 193**

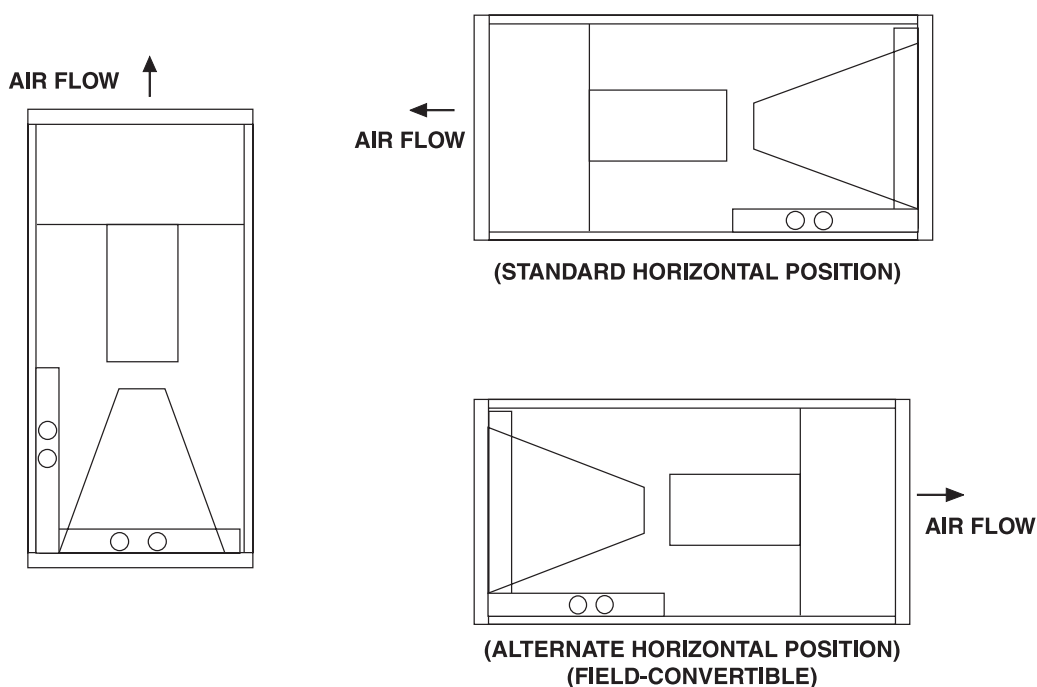
Installation:

No modification is required for vertical or horizontal (right-to-left) airflow. A horizontal drain pan is factory installed for right-to-left airflow and can be re-positioned within the cabinet to offer left-to-right airflow.

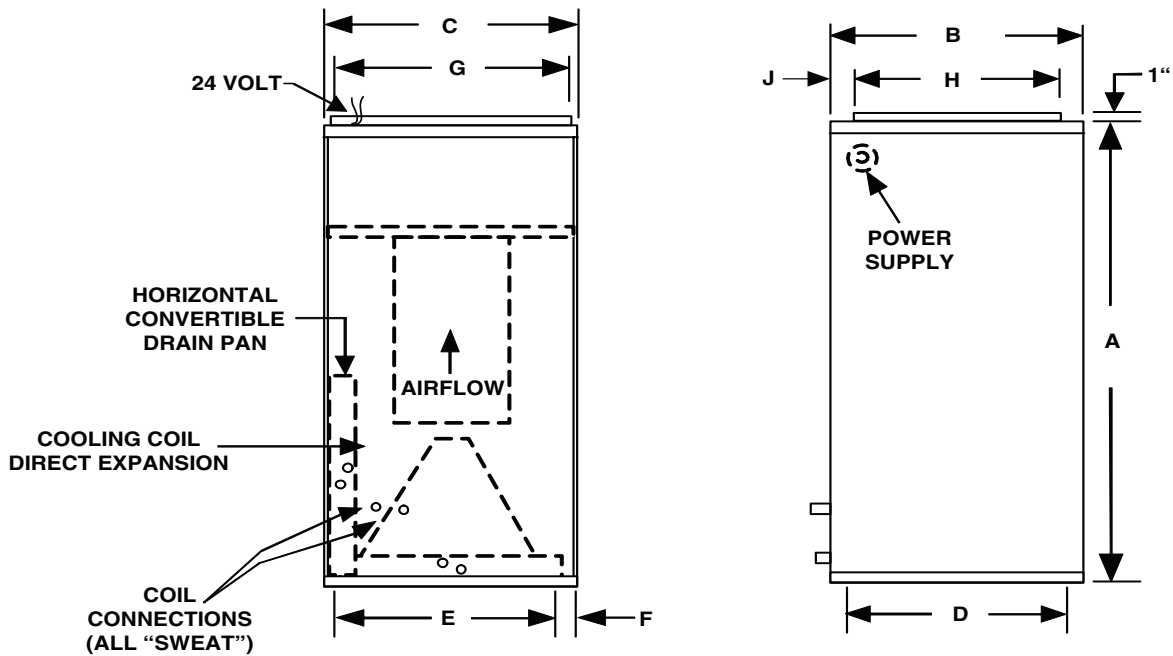
Accessories:

Accessories include cooling / heat pump R22 field mounted TXV kits. (P. 4)

3-WAY AIRFLOW



HCX (120V) Series



PHYSICAL DIMENSIONS												
UNIT MODEL	A	B	C	D	E	F	G	H	J	LIQ. (SWEAT)	SUCT. (SWEAT)	FILTER
18HCX**01 24HCX**01	40	20	20	18-1/2	16	2	18	16	3	3/8	5/8	18 X 20 X 1
30HCX**01 36HCX**01	42	23	20	21-1/2	16	2	18	17	5	3/8	3/4	20 X 22 X 1
48HCX**01 60HCX**01	48	28	21-1/4	26-1/4	17	2	19-1/4	18-1/4	8-7/8	1/2	7/8	20 X 25 X 1
61HCX**01	54	28	21-1/4	26-1/4	17	2	19-1/4	18-1/4	8-7/8	1/2	7/8	20 X 25 X 1

All TXVs are approved for cooling only or heat pump operation (non-bleed type).

NOTE:

Expansion valve requirement depends on the selected outdoor unit. Go to www.firstco.com under ratings or contact the factory for assistance.



HCX (120V) Series

ELECTRICAL AND CFM DATA

BLOWER DATA PSC Motor											
UNIT MODEL	Nom. Cooling tonnage	MOTOR HP (120V)	FLA	MCA	Max. Overload Protection	Motor Speed	CFM vs. EXTERNAL STATIC PRESSURE				
							0.1	0.2	0.3	0.4	0.5
18HCX**01	1.5	1/3	4.1	6.0	15	High	900	840	785	735	655
						M. High	855	805	755	695	605
						M. low	800	755	710	650	560
						Low	690	655	610	545	485
24HCX**01	1.5-2.0	1/3	4.1	6.0	15	High	920	855	785	715	635
						Med-HI	870	805	740	665	585
						Med-Low	795	725	665	605	530
						Low	670	620	570	510	430
30HCX**01	2.0-2.5	1/2	7.5	10	20	High	1485	1425	1360	1300	1225
						Medium	1405	1345	1285	1220	1160
						Low	1270	1230	1180	1120	1040
36HCX**01	2.5-3.0	1/2	7.5	10	20	High	1420	1360	1300	1240	1180
						Med-HI	1340	1280	1230	1175	1110
						Low	1225	1180	1140	1080	1025
48HCX**01	4-3.5	1	10.4	13	20	High	1820	1790	1750	1685	1620
						Medium	1460	1440	1405	1375	1330
						Low	1180	1170	1155	1125	1095
60HCX**01	4-5	1	10.4	13	20	High	1805	1760	1715	1650	1590
						Medium	1460	1440	1395	1355	1330
						Low	1165	1140	1125	1105	1065
61HCX**01	4-5	1	10.4	13	20	High	1860	1815	1765	1700	1640
						Medium	1505	1485	1435	1395	1370
						Low	1200	1175	1160	1140	1095

NOTE: Use 48HCX**01 for 3.5 ton applications and field convert to medium speed for

ACCESSORIES -

EXPANSION VALVE KITS for R22 (Field installed) (cooling only or heat pump)	
R22	
9EVR22-4	18/24HCX**01
9EVR22-5	30/36HCX**01
9EVR22-6	48/60HCX**01

NOTES:

1. Above expansion valve kits are approved for both cooling only (non heat pump) and heat pump applications.
2. Valves are non-bleed type. Field added. Hard start kit may be required.
3. Valves have screw-on connections.

Data is subject to change. Please verify most current information on www.firstco.com or www.AE-Air.com websites.



In keeping with its policy of continuous progress and product improvement, First Co. reserves the right to make changes without notice.



FIRST CO.
P.O. BOX 270969 - DALLAS, TEXAS 75227
PH. (214) 388-5751 | FAX (214) 388-2255
WWW.FIRSTCO.COM

AUGUST 2024