

*First Co.*

# CL SERIES

*CLP • CLX*

Closet Fan Coils

1 - 3 Ton Cooling or Heat Pump

0 - 10 kW Electric Heat

Compatible with R454B and R32

Compatible with R410A for Servicing Existing Equipment Only



---

# TABLE OF CONTENTS

NOMENCLATURE .....3

SERIES FEATURES .....4

CLP .....5

CLPQ.....6

CLPW .....8

CLX ..... 10

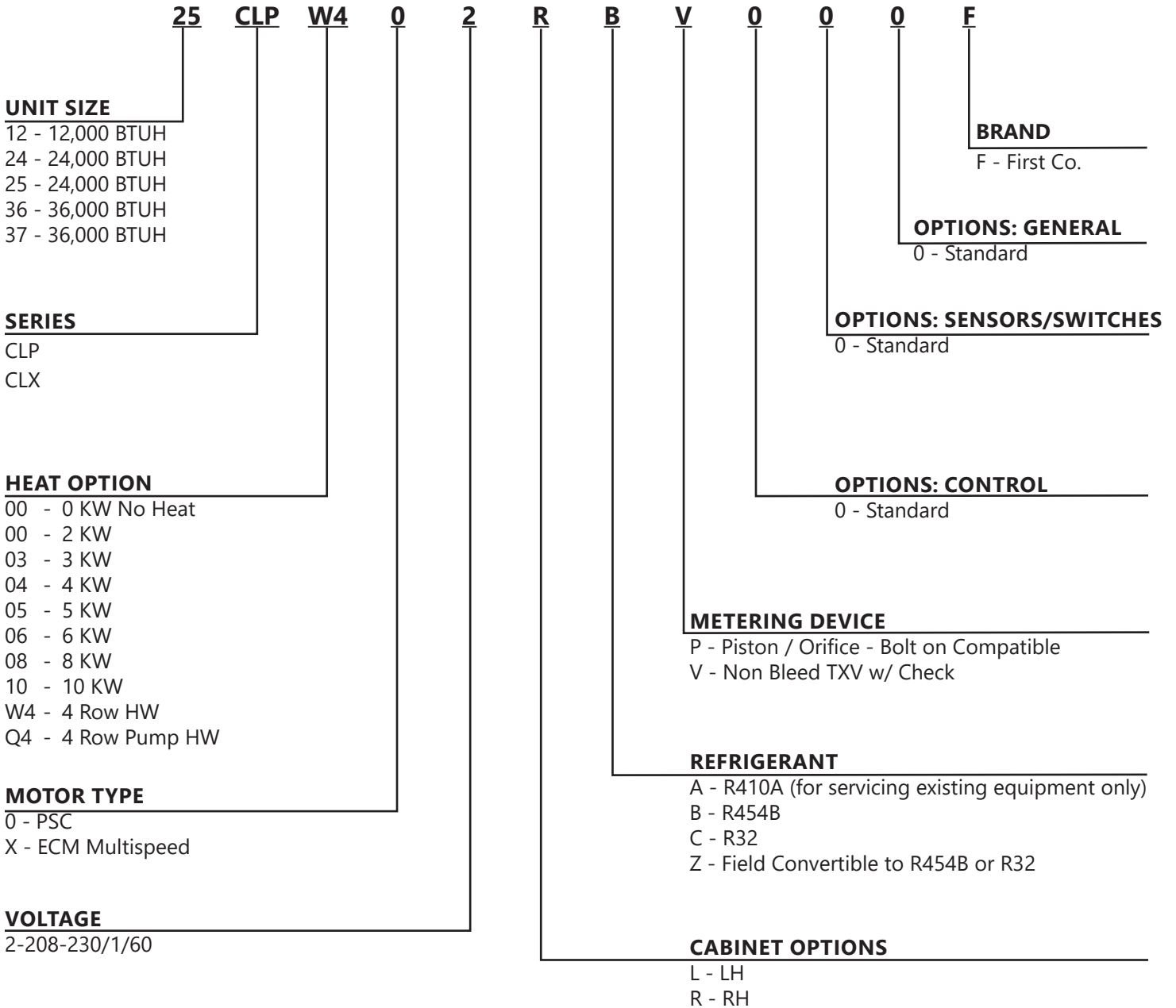
CLXQ..... 13

CLXW..... 15

First Co.'s customer is ultimately responsible for confirming which fan coil models are compatible with selected outdoor unit(s) and which expansion valves (if any) are required. To determine certified indoor/outdoor combinations, go to [www.firstco.com](http://www.firstco.com) or contact the factory.

In keeping with its policy of continuous progress and product improvement, First Co. reserves the right to make changes without notice.

# NOMENCLATURE



# CL SERIES

## CLOSET FAN COIL

### FEATURES

Today's higher efficiency air handlers are typically too large to fit into many smaller, space constrained closets. The CL Series air handler is specifically designed to solve this problem. In addition, it's short height (less than 36"), makes it ideal for those applications where the existing air handler is located over an electric water heater. These upflow air handlers are designed for use with today's higher efficiency split-system condensing units and heat pumps.

All CLX fan coils include a high efficiency constant torque ECM motor. These motors offer the efficiency of a variable speed type ECM motor, but at a considerably lower cost. ECM motors are up to 33 percent more efficient than PSC motors at the rated operating speed.

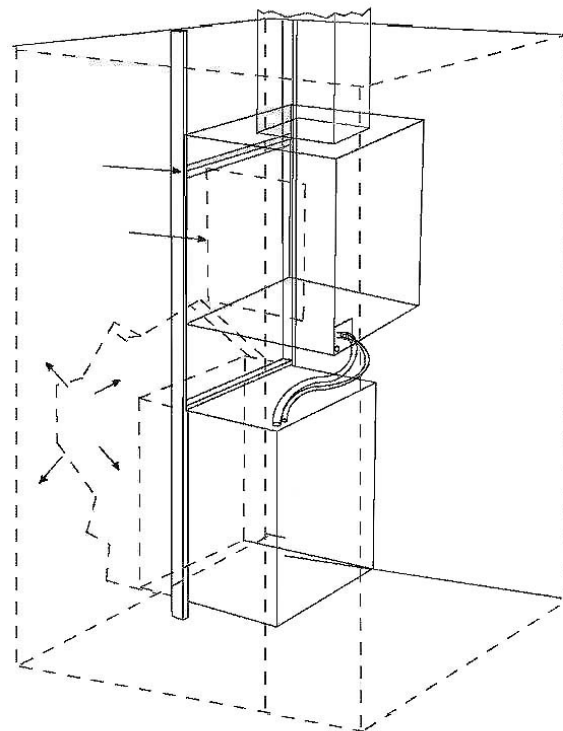
Return air (ducted or free return) can come from the left side or the right side of the cabinet (determined by looking at the front of the cabinet) and must be identified at the time of order entry.

A high efficiency coil is factory installed on either side of the cabinet, and is standard with a factory installed TXV. A 1" disposable filter is also factory installed within the cabinet and is easily accessible.

Compatible with R454B and R32 using non-bleed TXVs. Compatible with R410A when servicing existing units only. Units ordered for R454B and R32 (Options B and C) are factory configured with TXV or Piston and factory mounted refrigerant sensor. Field Convertible units (option Z) are available which can be field configured with TXV and Refrigerant Sensor Kit. R454B and R32 units will require a refrigerant sensor.

### STANDARD FEATURES

- Less than 36" tall
- Right or left hand return air (order must specify)
- Compatible with most major brands of condensing units and heat pumps (see (1) above)
- Up to 10 kW of electric heat
- High efficiency copper tube / aluminum fin coil with factory installed TXV (non-bleed type)
- 240V motor, 24V controls
- Coil drain pan is coated with insulation to reduce corrosion
- Factory installed hanger flange for wall mounting
- Easily accessible 1" disposable filter
- Shipped with wall mounting bracket



# CL SERIES

CLOSET FAN COIL

**CLP**

DATA TABLES

## CLP

PHYSICAL DIMENSIONS										
UNIT MODEL	H	W	D	A	B	C	E	F	G	SHIP WT.
24CLP	27-3/8	22-3/8	24-3/8	15-7/8	20-1/2	16	16	2-3/8	4	120 LBS.
36CLP	29-3/8	26-3/8	26-3/8	18-3/8	23-2/8	18	16	3	5	130 LBS.

COOLING COIL DATA (FACTORY INSTALLED)				
UNIT MODEL	NOMINAL COOLING (TONS)	STANDARD METERING DEVICE	COIL CONNECTION (LIQ. & SUCT.)	FILTER
24CLP	2.0 / 1.5 tons	TXV	3/8 I.D. / 5/8 I.D. (SWEAT)	18 X 24 X 1
36CLP	3.0 / 2.5 tons	TXV		20 X 25 X 1

BLOWER DATA										
UNIT MODEL	FAN SPEED	AMP (230V)	MOTOR HP	CFM vs EXTERNAL STATIC PRESSURE						
				.10	.15	.20	.25	.30	.40	.50
24CLP	HIGH LOW	1.6	1/6	820	815	810	800	795	755	700
				600	595	585	575	565	525	500
36CLP	HIGH LOW	2.5	1/3	1510	1480	1455	1425	1400	1345	1280
				1130	1120	1110	1100	1090	1060	1010

PERFORMANCE DATA												
UNIT MODEL	NOM. CFM	ELECTRIC HEAT CAPACITY				TOTAL AMPS		MIN. CIR. AMPACITY		MAX. FUSE OR HACR BREAKER		
		kW		MBTUH		240V	208V	240V	208V	240V	208V	
		240V	208V	240V	208V							
24CLP	2	2.0	1.5	6.8	5.1	9.5	8.4	12.0	11.0	15.0	15.0	
	3	3.0	2.3	10.2	7.9	13.7	12.3	18.0	15.0	20.0	15.0	
	4	4.0	3.0	13.6	10.2	17.9	15.6	23.0	20.0	25.0	20.0	
	5	5.0	3.8	17.0	13.0	22.0	19.5	28.0	25.0	30.0	25.0	
	6	6.0	4.5	20.5	15.3	26.2	22.8	33.0	29.0	35.0	30.0	
	8	8.0	6.0	27.3	20.5	34.5	30.0	44.0	38.0	45.0	40.0	
	10	10.0	7.5	34.1	25.6	42.9	37.3	54.0	47.0	60.0	50.0	
36CLP	2	2.0	1.5	6.8	5.1	10.8	9.7	14.0	12.0	15.0	15.0	
	3	3.0	2.3	10.2	7.9	15.0	13.6	19.0	17.0	20.0	20.0	
	4	4.0	3.0	13.6	10.2	19.2	16.9	24.0	21.0	25.0	25.0	
	5	5.0	3.8	17.0	13.0	23.3	20.8	29.0	26.0	30.0	30.0	
	6	6.0	4.5	20.5	15.3	27.5	24.1	35.0	30.0	35.0	30.0	
	8	8.0	6.0	27.3	20.5	35.8	31.3	45.0	39.0	45.0	40.0	
	10	10.0	7.5	34.1	25.6	44.2	38.6	55.0	48.0	60.0	50.0	

# CL SERIES

CLOSET FAN COIL

**CLPQ**

DATA TABLES

## CLPQ

COOLING OR HEAT PUMP  
HYDRONIC HEAT

DIMENSIONS										
UNIT MODEL	H	W	D	A	B	C	E	F	G	SHIP WT.
24CLPQ	27-3/8	22-3/8	24-3/8	15-7/8	20-1/2	16	12	2-3/8	7-3/4	120 LBS.
36CLPQ	29-3/8	26-3/8	26-3/8	18-3/8	23-2/8	18	16	3	7-1/4	130 LBS.

COOLING COIL DATA (FACTORY INSTALLED)				
PRODUCT NUMBER	NOMINAL COOLING (TONS)	STANDARD METERING DEVICE	COIL CONNECTION (LIQ. & SUCT.)	FILTER
24CLPQ	2.0 / 1.5 tons	TXV	3/8 I.D. / 5/8 I.D. (SWEAT)	18 X 24 X 1
36CLPQ	3.0 / 2.5 tons	TXV		20 X 25 X 1

ELECTRICAL DATA					
UNIT MODEL	MOTOR HP	AMPS		MIN. CIRCUIT AMPACITY	MAX. FUSE OR HACR BREAKER
		MOTOR	PUMP	120V	120V
24CLPQ	1/4	4.43	.57	7.0	15
36CLPQ	1/2	8.10	.57	11.0	15

BLOWER DATA										
UNIT MODEL	FAN SPEED	AMP (120V)	MOTOR HP	CFM vs EXTERNAL STATIC PRESSURE						
				.10	.15	.20	.25	.30	.40	.50
24CLPQ	HIGH	4.43	1/4	785	765	740	720	695	645	590
	LOW			445	440	430	402	410	385	350
36CLQ	HIGH	8.1	1/2	1230	1195	1160	1125	1090	1010	930
	LOW			1080	1050	1025	995	965	895	825

# CL SERIES

CLOSET FAN COIL

# CLPQ

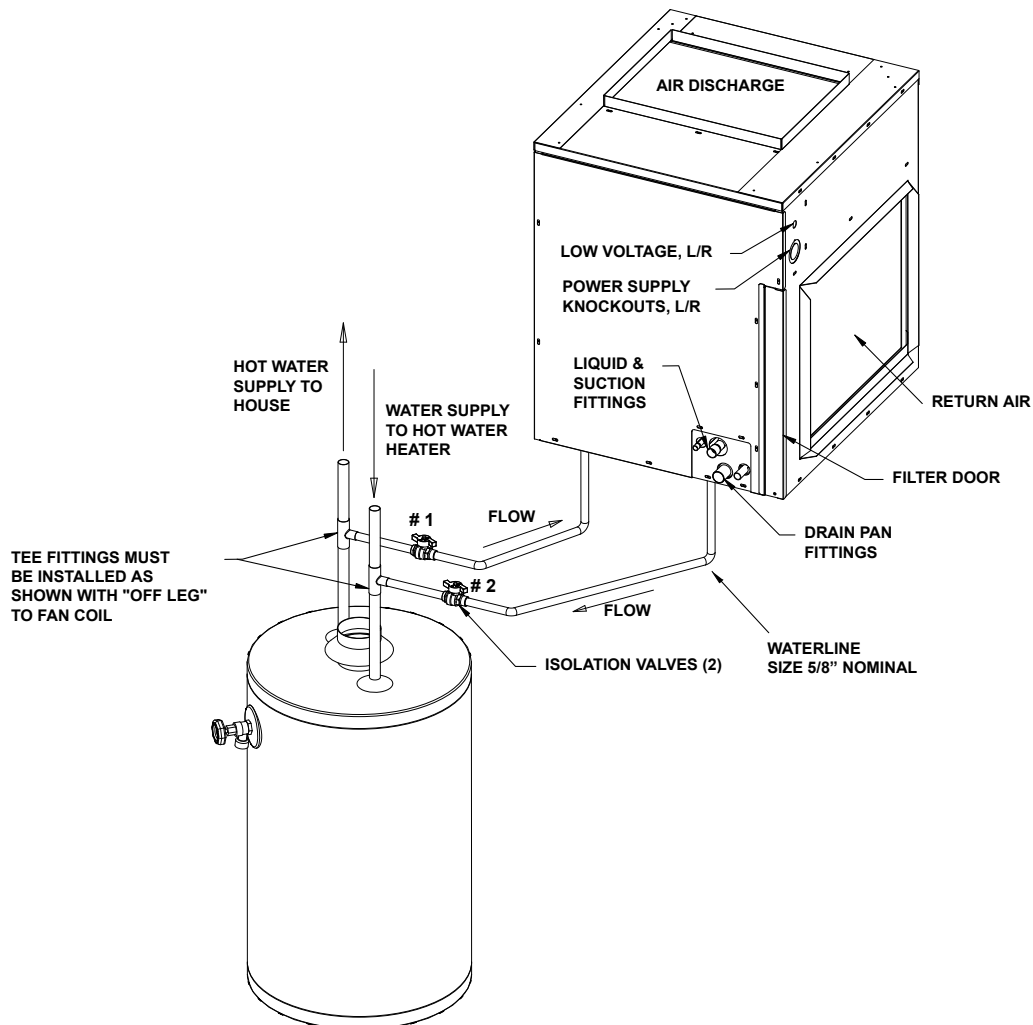
DATA TABLES

## CLPQ

COOLING OR HEAT PUMP  
HYDRONIC HEAT

HEATING PERFORMANCE					
UNIT MODEL	NOM. CFM	BTUH ENTERING WATER TEMP. Delta-T 20° F & GPM			
		130°	GPM	140°	GPM
24CLPQ	600	25,700	2.6	30,000	3.0
	700	28,300	2.8	33,000	3.3
	800	30,800	3.1	36,000	3.6
36CLPQ	1000	42,000	4.2	49,000	4.9
	1200	47,000	4.7	55,000	5.5

1. Heat BTUH is at 70°F entering air temperature.
2. Based on 20°F Delta-T. Velocity not to exceed 4ft./sec.



# CL SERIES

CLOSET FAN COIL

# CLPW

DATA TABLES

## CLPW

DIMENSIONS										
UNIT MODEL	H	W	D	A	B	C	E	F	G	SHIP WT.
24CLPW	27-3/8	22-3/8	24-3/8	15-7/8	20-1/2	16	12	2-3/8	7-3/4	120 LBS.
36CLPW	29-3/8	26-3/8	26-3/8	18-3/8	23-2/8	18	16	3	7-1/4	130 LBS.

COOLING COIL DATA (FACTORY INSTALLED)				
PRODUCT NUMBER	NOMINAL COOLING (TONS)	STANDARD METERING DEVICE	COIL CONNECTION (LIQ. & SUCT.)	FILTER
24CLPW	2.0 / 1.5 tons	TXV	3/8 I.D. / 5/8 I.D. (SWEAT)	18 X 24 X 1
36CLPW	3.0 / 2.5 tons	TXV		20 X 25 X 1

ELECTRICAL DATA				
UNIT MODEL	MOTOR HP	AMPS	MIN. CIRCUIT AMPACITY	MAX. FUSE OR HACR BREAKER
		MOTOR	120V	120V
24CLPW	1/4	4.43	6.0	15
36CLPW	1/2	8.10	10.0	15

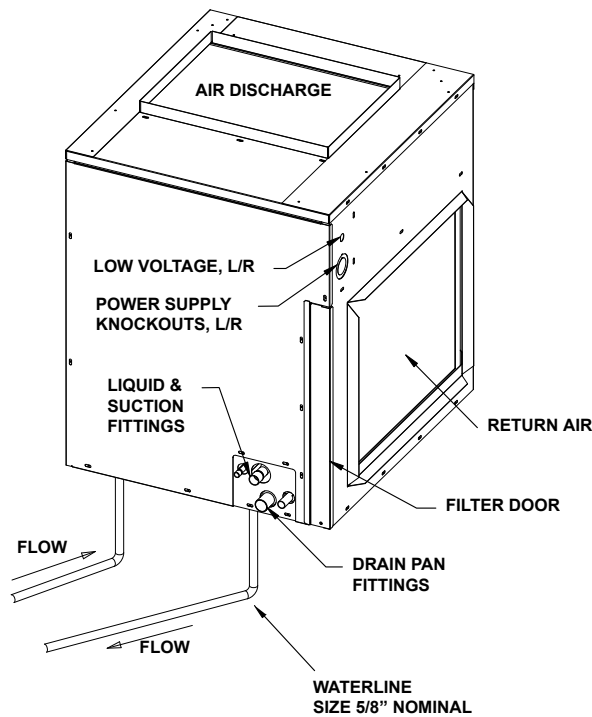
BLOWER DATA										
UNIT MODEL	FAN SPEED	AMP (120V)	MOTOR HP	CFM vs EXTERNAL STATIC PRESSURE						
				.10	.15	.20	.25	.30	.40	.50
24CLPW	HIGH	4.43	1/4	785	765	740	720	695	645	590
	LOW			445	440	430	402	410	385	350
36CLPW	HIGH	8.1	1/2	1230	1195	1160	1125	1090	1010	930
	LOW			1080	1050	1025	995	965	895	825



## CLPW (CONT'D)

HEATING PERFORMANCE					
UNIT MODEL	NOM. CFM	BTUH ENTERING WATER TEMPERATURE – Delta-T 20° F & GPM			
		130°	GPM	140°	GPM
24CLPW	600	25,700	2.6	30,000	3.0
	700	28,300	2.8	33,000	3.3
	800	30,800	3.1	36,000	3.6
36CLPW	1000	42,000	4.2	49,000	4.9
	1200	47,000	4.7	55,000	5.5

1. Heat BTUH is at 70°F entering air temperature.
2. Based on 20°F Delta-T. Velocity not to exceed 4ft./sec.



**Drain Connections:**  
 Primary 3/4" MPT  
 Secondary 3/4" OD Sweat

# CL SERIES

## CLOSET FAN COIL

# CLX

## DATA TABLES

PERFORMANCE DATA												
UNIT MODEL	NOM. BTUH CLG.	ELECTRIC HEAT CAPACITY				TOTAL AMPS		MIN. CIR. AMPACITY		MAX. FUSE OR HACR BREAKER		
		kW		MBTUH		240V	208V	240V	208V	240V	208V	
		240V	208V	240V	208V							
12CLX	2	2.0	1.5	6.8	5.1	10.6	9.5	14	12	15.0	15.0	
	3	3.0	2.3	10.2	7.9	14.8	13.1	19	17	20.0	20.0	
	4	4.0	3.0	13.6	10.2	19.0	16.7	24	21	25.0	25.0	
	5	5.0	3.8	17.0	13.0	23.1	20.3	29	26	30.0	30.0	
24/25CLX	2	2.0	1.5	6.8	5.1	11.1	10.0	14	13	15.0	15.0	
	3	3.0	2.3	10.2	7.9	15.3	13.9	19	17	20.0	20.0	
	4	4.0	3.0	13.6	10.2	19.5	17.2	24	22	25.0	25.0	
	5	5.0	3.8	17.0	13.0	23.6	21.1	30	26	30.0	30.0	
	6	6.0	4.5	20.5	15.3	27.8	24.4	35	31	35.0	35.0	
	8	8.0	6.0	27.3	20.5	36.1	31.6	45	40	45.0	40.0	
10	10.0	7.5	34.1	25.6	44.5	38.9	56	49	60.0	50.0		
36/37CLX	2	2.0	1.5	6.8	5.1	12.4	11.3	16	14	20.0	15.0	
	3	3.0	2.3	10.2	7.9	16.6	15.2	21	19	25.0	20.0	
	4	4.0	3.0	13.6	10.2	20.8	18.5	26	23	30.0	25.0	
	5	5.0	3.8	17.0	13.0	24.9	22.4	31	28	35.0	30.0	
	6	6.0	4.5	20.5	15.3	29.1	25.7	36	32	40.0	35.0	
	8	8.0	6.0	27.3	20.5	37.4	32.9	47	41	50.0	45.0	
10	10.0	7.5	34.1	25.6	45.8	40.2	57	50	60.0	50.0		

BLOWER DATA										
UNIT MODEL	FAN SPEED TAP	MOTOR AMPS (230V)	MOTOR HP	CFM VS EXTERNAL STATIC PRESSURE						
				0.10	0.15	0.20	0.25	0.30	0.40	0.50
12CLX	WHT	2.3	1/4	545	530	510	495	480	---	---
	GRY			505	490	475	455	440	---	---
	VIO			315	290	265	235	205	---	---
24CLX	5	2.8	1/3	880	865	850	845	840	830	790
	4			790	780	770	765	760	740	710
	3			690	685	680	670	660	620	595
	2			590	585	585	570	550	510	485
25CLX	4	2.8	1/3	960	940	920	900	880	840	800
	3			820	800	780	720	740	690	650
	2			650	620	590	565	540	470	410
	1			550	520	490	455	420	---	---
36CLX	5	4.1	1/2	1390	1370	1350	1335	1320	1280	1240
	4			1250	1230	1210	1190	1170	1130	1090
	3			1100	1080	1060	1040	1020	970	920
	2			830	805	780	755	730	680	630
37CLX	5	4.1	1/2	1330	1315	1300	1275	1250	1220	1190
	4			1190	1170	1150	1135	1120	1080	1050
	3			1060	1040	1020	1000	980	940	900
	2			940	915	890	870	850	810	760

# CL SERIES

## CLOSET FAN COIL

# CLX

## DATA TABLES

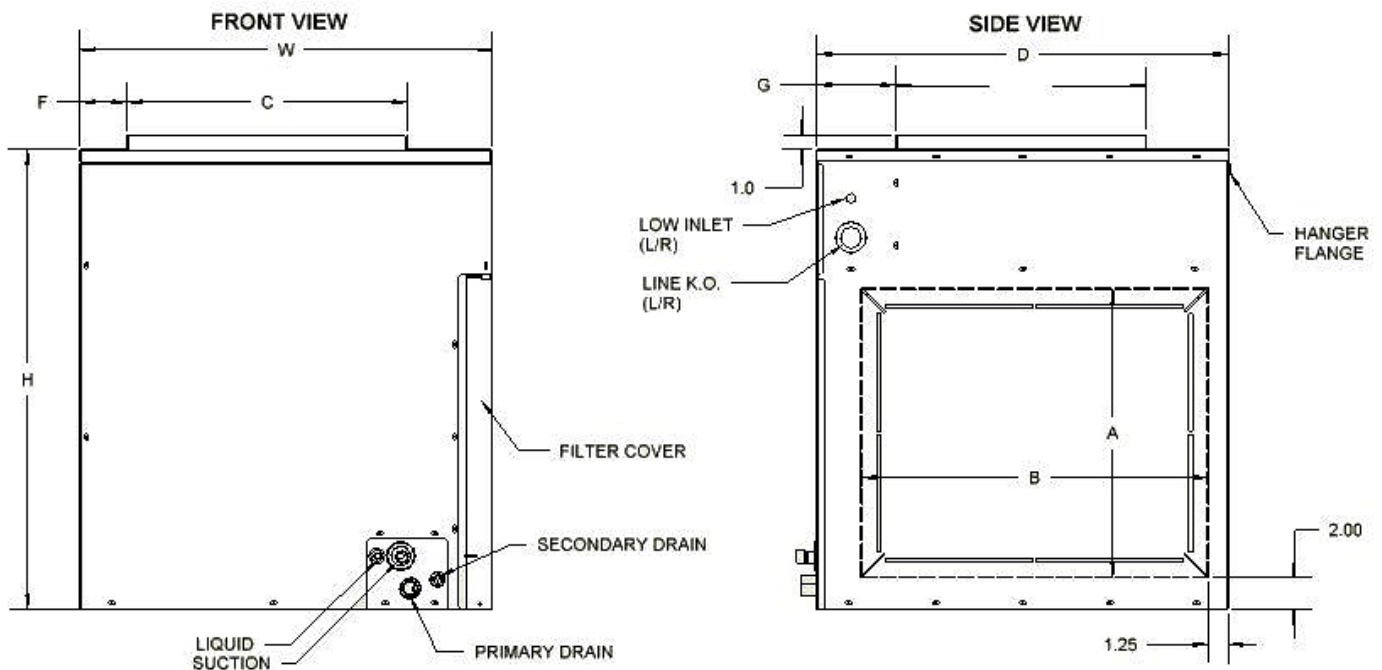
COOLING COIL DATA (FACTORY INSTALLED)				
MODEL NUMBER	NOMINAL COOLING (TONS)	STANDARD METERING DEVICE	COIL CONNECTION (LIQ. & SUCT.)	FILTER
12CLX	1.0 tons	TXV	3/8 I.D. / 5/8 I.D. (SWEAT)	18 X 24 X 1
24CLX	2.0 / 1.5 tons	TXV		18 X 24 X 1
25CLX	2.0 / 1.5 tons	TXV		20 X 25 X 1
36CLX	3.0 / 2.5 tons	TXV		20 X 25 X 1
37CLX	3.0 / 2.5 tons	TXV		25 x 25 x 1

DIMENSIONS										
UNIT MODEL	H	W	D	A	B	C	E	F	G	SHIP WT.
12CLX	27-3/8	22-3/8	24-3/8	15-7/8	19-1/4	16	12	2-3/8	7-3/4	110
24CLX	27-3/8	22-3/8	24-3/8	15-7/8	19-1/4	16	16	2-3/8	7-3/4	120
25/36CLX	29-3/8	26-3/8	26-3/8	18-3/8	22-3/8	18	16	3	7-3/4	130
37CLX	35-3/8	26-3/8	26-3/8	24-3/8	22-3/8	18	16	3	7-3/4	140

**Drain Connections:**

Primary 3/4" MPT

Secondary 3/4" OD Sweat



### CLX (CONT'D)

EXPANSION VALVE/REFRIGERANT SENSOR KITS (HEAT PUMP OR COOLING ONLY)			
PART NUMBER	TYPE	FOR	SENSOR
9EVR410-6	R410A	12-37 CL*	TXV FOR SERVICING EXISTING EQUIPMENT ONLY
9EVR454B-5	R454B	12-37 CL*	CE100
9EVR32-5	R32	12-37 CL*	CE100
9EVR454B-5A	R454B	12-37 CL*	NO SENSOR
9EVR32-5A	R32	12-37 CL*	NO SENSOR
9EVRA2L-4	R454B/R32	12-37 CL*	CE100

**NOTES:**

1. Above expansion valve kits are approved for both cooling only (non heat pump) or heat pumps applications.
2. Valves are non-bleed type. Field added. Hard start kit may be required.
3. Valves have screw-on connections.
4. Field installed for field convertible (Z) option.

### IMPORTANT NOTE

When these units are used with A2L refrigerants they must be fitted with a REFRIGERANT SENSOR and if using a TXV then the TXV must be compatible with the A2L refrigerant that is used. Failure to use a REFRIGERANT SENSOR may result in unit damage, property damage and/or death. Warranty will be void.

# CL SERIES

CLOSET FAN COIL

# CLXQ

DATA TABLES

## CLXQ

DIMENSIONS										
UNIT MODEL	H	W	D	A	B	C	E	F	G	SHIP WT.
12CLXQ	27-3/8	22-3/8	24-3/8	15-7/8	19-1/4	16	12	2-3/8	73/4	110 LBS.
24CLXQ	27-3/8	22-3/8	24-3/8	15-7/8	19-1/4	16	12	2-3/8	7-3/4	120 LBS.
25/36CLXQ	29-3/8	26-3/8	26-3/8	18-3/8	22-3/8	18	16	3	7-1/4	130 LBS.
37CLXQ	35-3/8	26-3/8	26-3/8	18-3/8	22-3/8	18	16	3	7-1/4	140 LBS.

BLOWER DATA										
UNIT MODEL	FAN SPEED TAP	AMP (120V)	MOTOR HP	CFM vs EXTERNAL STATIC PRESSURE						
				0.10	0.15	0.20	0.25	0.30	0.40	0.50
12CLXQ	WHT	3.5	1/4	540	525	515	500	485	455	425
	VIO			515	500	485	470	455	425	390
	GRY			305	285	265	240	220	175	- - -
24CLXQ	5	6.8	1/2	845	825	800	780	755	710	650
	4			835	815	790	770	745	700	640
	3			755	685	730	670	700	675	620
	2			600	587	570	570	540	510	485
25CLXQ	5	6.8	1/2	970	955	940	930	920	860	800
	4			820	805	790	775	760	720	690
	3			650	630	610	585	560	510	460
	2			550	525	500	475	450	400	350
36CLXQ	5	8.4	3/4	1270	1230	1195	1165	1135	1060	965
	4			1180	1160	1140	1116	1090	1035	940
	3			1040	1020	1005	985	965	925	890
	2			970	950	925	905	885	845	810
37CLXQ	5	8.4	3/4	1340	1320	1300	1285	1270	1250	1220
	4			1180	1165	1150	1130	1110	1090	1060
	3			1050	1030	1010	995	980	950	920
	2			930	915	900	880	860	820	760

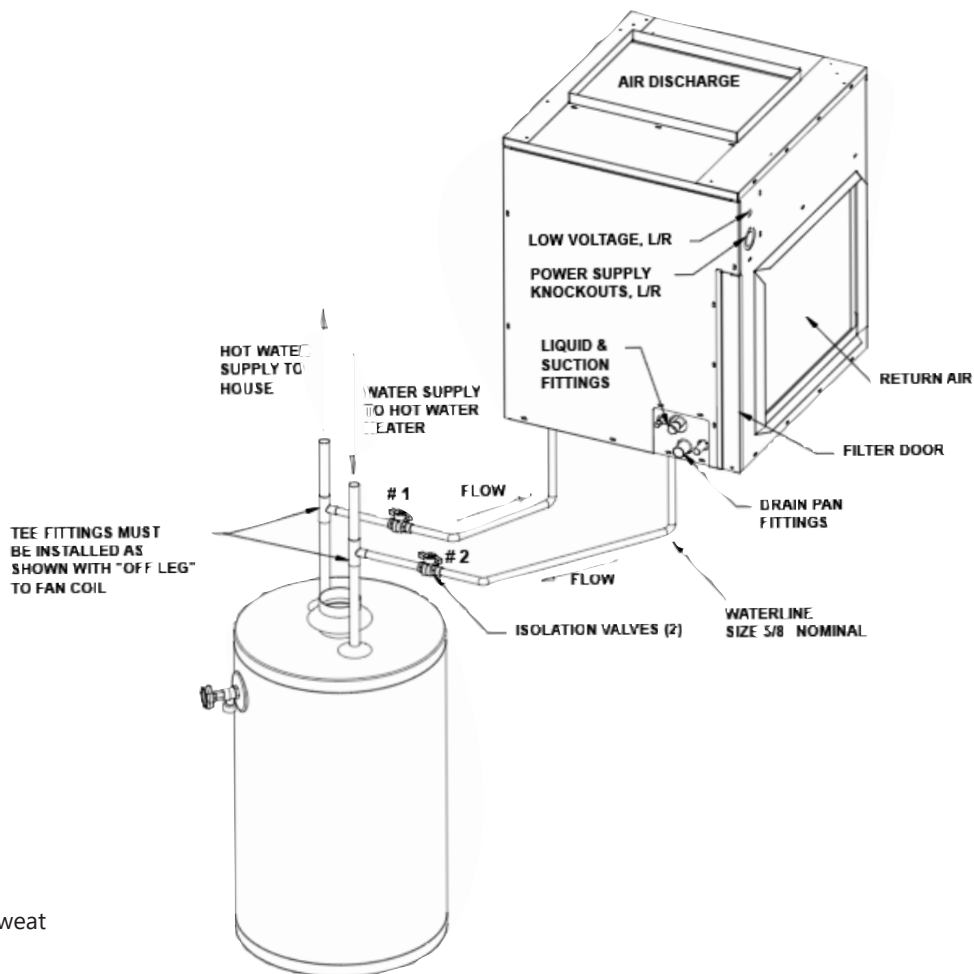
ELECTRICAL DATA					
UNIT MODEL	MOTOR HP	AMPS		MIN. CIRCUIT AMPACITY	MAX. FUSE OR HACR BREAKER
		MOTOR	PUMP	120V	120V
12CLXQ	1/4	3.5	.75	5.0	15
24/25CLXQ	1/2	6.8	.75	10.0	15
36/37CLXQ	3/4	8.4	.75	12.0	15

COOLING COIL DATA (FACTORY INSTALLED)				
PRODUCT NUMBER	NOMINAL COOLING (TONS)	STANDARD METERING DEVICE	COIL CONNECTION (LIQ. & SUCT.)	FILTER
12CLXQ	1.0 tons	TXV	3/8 O.D. / 5/8 O.D. (SWEAT)	18 X 24 X 1
24CLXQ	2.0 / 1.5 tons	TXV		18 X 24 X 1
25CLXQ	2.0 / 1.5 tons	TXV		20 X 25 X 1
36CLXQ	3.0 / 2.5 tons	TXV		20 X 25 X 1
37CLXQ	3.0 / 2.5 tons	TXV		25 X 25 X 1

## CLXQ (CONT'D)

HEATING PERFORMANCE					
UNIT MODEL	NOM. CFM	BTUH ENTERING WATER TEMP. Delta-T 20°F & GPM			
		130°F	GPM	140°F	GPM
12CLXQ	275	14,500	1.5	16,900	2.0
	400	18,850	1.9	22,000	2.2
24CLXQ	600	25,700	2.6	30,000	3.0
	700	28,300	2.8	33,000	3.3
	800	30,800	3.1	36,000	3.6
25CLXQ	600	27,300	2.7	31,900	3.2
	700	30,500	3.1	45,600	4.6
	800	33,300	3.3	38,900	3.9
36/37CLXQ	1000	42,000	4.2	49,000	4.9
	1200	47,000	4.7	55,000	5.5

1. Heat BTUH is at 70°F entering air temperature.
2. Based on 20°F Delta-T. Velocity not to exceed 4ft./sec.



**Drain Connections:**  
 Primary 3/4" MPT  
 Secondary 3/4" OD Sweat  
 Typical connection to  
 Tank-Type Water Heater

## CLXW

DIMENSIONS										
UNIT MODEL	H	W	D	A	B	C	E	F	G	SHIP WT.
12CLXW	27-3/8	22-3/8	24-3/8	15-7/8	20-1/2	16	12	2-3/8	7-3/4	110 LBS.
24CLXW	27-3/8	22-3/8	24-3/8	15-7/8	20-1/2	16	12	2-3/8	7-3/4	120 LBS.
25/36CLXW	29-3/8	26-3/8	26-3/8	18-3/8	23-2/8	18	16	3	7-1/4	130 LBS.
37CLXW	35-3/8	26-3/8	26-3/8	18-3/8	23-2/8	18	16	3	7-1/4	140 LBS.

ELECTRICAL DATA				
UNIT MODEL	MOTOR HP	AMPS	MIN. CIRCUIT AMPACITY	MAX. FUSE OR HACR BREAKER
		MOTOR	120V	120V
12CLXW	1/4	3.5	5.0	15
24/25CLXW	1/2	6.8	9.0	15
36/37CLXW	3/4	8.4	11.0	15

BLOWER DATA												
UNIT MODEL	FAN SPEED TAP	AMP (120V)	MOTOR HP	CFM VS EXTERNAL PRESSURE								
				0.1	0.15	0.2	0.25	0.3	0.4	0.5		
12CLXW	WHT	3.5	1/4	540	525	515	500	485	455	425		
	VIO			515	500	485	470	455	425	390		
	GRY			305	285	265	240	220	175	-		
24CLXW	5	6.8	1/2	845	825	800	780	755	710	650		
	4			835	815	790	770	745	700	640		
	3			755	685	730	670	700	675	620		
	2			600	587	570	570	540	510	485		
25CLXW	5			6.8	1/2	970	955	940	930	920	860	800
	4					820	805	790	775	760	720	690
	3					650	630	610	585	560	510	460
	2					550	525	500	475	450	400	350
36CLXW	5	8.4	3/4			1270	1230	1195	1165	1135	1060	965
	4					1180	1160	1140	1116	1090	1035	940
	3					1040	1020	1005	985	965	925	890
	2					970	950	925	905	885	845	810
37CLXW	5			8.4	3/4	1340	1320	1300	1285	1270	1250	1220
	4					1180	1165	1150	1130	1110	1090	1060
	3					1050	1030	1010	995	980	950	920
	2					930	915	900	880	860	820	760

# CL SERIES

CLOSET FAN COIL

# CLXW

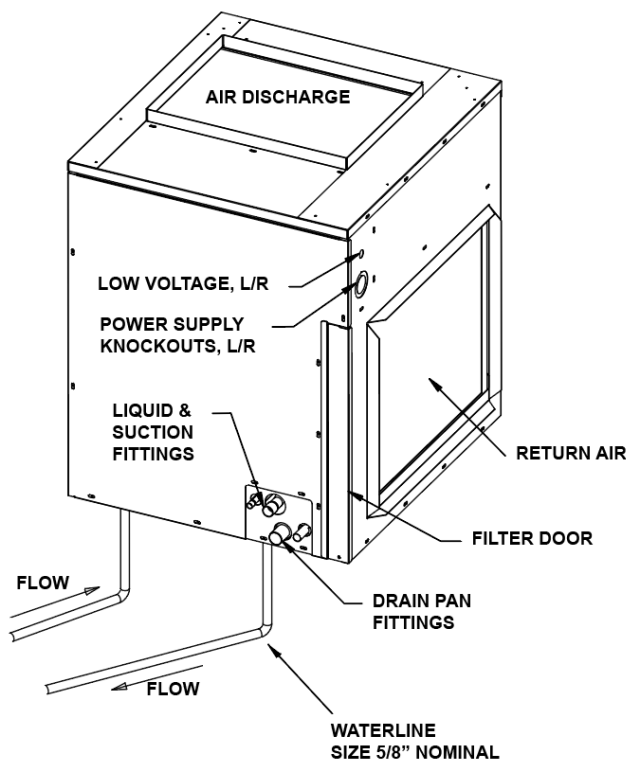
DATA TABLES

## CLXW (CONT'D)

HEATING PERFORMANCE					
UNIT MODEL	NOM. CFM	BTUH ENTERING WATER TEMP. Delta-T 20°F & GPM			
		130° F	GPM	140°F	GPM
12CLXW	275	14,500	1.5	16,900	1.7
	400	18,850	1.9	22,000	2.2
24CLXW	600	25,700	2.6	30,000	3.0
	700	28,300	2.8	33,000	3.3
	800	30,800	3.1	36,000	3.6
25CLXW	600	27,300	2.7	31,900	3.2
	700	30,500	3.1	45,600	4.6
	800	33,300	3.3	38,900	3.9
36/37CLXW	1000	42,000	4.2	49,000	4.9
	1200	47,000	4.7	55,000	5.5

1. Heat BTUH is at 70°F entering air temperature.
2. Based on 20°F Delta-T. Velocity not to exceed 4ft./sec.

COOLING COIL DATA (FACTORY INSTALLED)				
PRODUCT NUMBER	NOMINAL COOLING (TONS)	STANDARD METERING DEVICE	COIL CONNECTION (LIQ. & SUCT.)	FILTER
12CLXW	1.0 tons	TXV	3/8 O.D. / 5/8 O.D. (SWEAT)	18 X 24 X 1
24CLXW	2.0 / 1.5 tons	TXV		18 X 24 X 1
25CLXW	2.0 / 1.5 tons	TXV		20 X 25 X 1
36CLXW	3.0 / 2.5 tons	TXV		20 X 25 X 1
37CLXW	3.0 / 2.5 tons	TXV		25 X 25 X 1



**WARNING AVERTISSEMENT ADVERTENCIA**  
 Cancer and Reproductive Harm  
 Cancer et Troubles de l'appareil reproducteur  
 Cáncer y Daño Reproductivo  
[www.P65Warnings.ca.gov](http://www.P65Warnings.ca.gov) LBY0057





*AMERICAN-MADE. FAMILY OWNED.*



FIRST CO.  
P.O. BOX 270969 - DALLAS, TEXAS 75227  
PH. (214) 388-5751 | FAX (214) 388-2255  
[WWW.FIRSTCO.COM](http://WWW.FIRSTCO.COM)

**OCTOBER 2024**